



**Het Pand, Ghent, Belgium
15-16 October 2019**

**40th AIVC Conference
8th TightVent Conference
6th venticool Conference**

**From energy crisis to sustainable indoor
climate – 40 years of AIVC**

PROCEEDINGS

In cooperation with:



In the past 40 years, since the first oil crisis in the seventies, energy and climate goals have been shaping many countries' policy and legislative agendas. The building sector plays a crucial role in achieving these goals, considering the energy use attributed to buildings and its huge potential for improved energy performance.

Whereas in the past most of the focus was on reducing the energy consumption, it is now clear that better performing buildings must ensure an acceptable Indoor Environmental Quality (IEQ), by providing higher Indoor Air Quality (IAQ) and comfort levels for their occupants. Building ventilation entails both challenges and opportunities to achieve this goal.

In 2019 the AIVC completes its 40th year of existence and the conference organisers thought that it would be good to pay a particular interest to the evolution during these 40 years.

This is the context defining the core theme of the joint 40th AIVC, 8th TightVent and 6th venticool Conference as: **"From Energy crisis to sustainable indoor climate – 40 years of AIVC"**.

Within its 40th year of operation and annual Conference, the AIVC board decided to offer authors the opportunity for a peer review of their paper. The procedure was twofold including 2 separate calls for abstracts & papers depending on whether the authors were interested in the peer review of their papers or not.

The papers which have been peer reviewed are indicated in the table of contents.

Acknowledgments

The conference organisers gratefully acknowledge the support from:

AIVC with its member countries : Australia, Belgium, China, Denmark, France, Greece, Ireland, Italy, Japan, the Netherlands, New Zealand, Norway, Republic of Korea, Spain, Sweden, UK and USA.

Since 1980, the annual AIVC conferences have been the meeting point for presenting and discussing major developments and results regarding infiltration and ventilation in buildings. AIVC contributes to the programme development, selection of speakers and dissemination of the results. pdf files of the papers of older conferences can be found in AIRBASE. See www.aivc.org.



Ghent University

Ghent University was founded in 1817 and is a top 100 university and one of the major Belgian universities counting over 41,000 students and 9,000 employees. Located in Flanders, the Dutch-speaking part of Belgium and the cultural and economical heart of Europe, Ghent University is an active partner in national and international educational, scientific and industrial cooperation. Our 11 faculties offer a wide range of courses and conduct in-depth research within a wide range of scientific domains.



TightVent Europe

The TightVent Europe 'Building and Ductwork Airtightness Platform' was launched in January 2011.

It aims at facilitating exchanges and progress on building and ductwork airtightness issues, including the production and dissemination of policy oriented reference documents and the organization of conferences, workshops, webinars, etc.

TightVent Europe has been initiated by INIVE EEIG (International Network for Information on Ventilation and Energy Performance) with at present the financial and/or technical support of the following partners: Lindab, MEZ-TECHNIK, Retrotec, BlowerDoor GmbH, Eurima, Soudal, Gonal, SIGA, Buildings Performance Institute Europe and the Covenant of Mayors for Climate & Energy.



venticool

The international ventilative cooling platform, venticool (venticool.eu) was launched in October 2012 to accelerate the uptake of ventilative cooling by raising awareness, sharing experience and steering research and development efforts in the field of ventilative cooling. The platform supports better guidance for the appropriate implementation of ventilative cooling strategies as well as adequate credit for such strategies in building regulations. The platform philosophy is pull resources together and to avoid duplicating efforts to maximize the impact of existing and new initiatives. venticool collaborates with organizations with significant experience and/or well identified in the field of ventilation and thermal comfort like AIVC (www.aivc.org) and REHVA (www.rehva.eu). venticool has been initiated by INIVE EEIG (International Network for Information on Ventilation and Energy Performance) with the financial and/or technical support of the following partners: Agoria-NAVENTA, Velux, WindowMaster, CIBSE nvg, the Covenant of Mayors for Climate & Energy and REHVA.



INIVE EEIG (International Network for Information on Ventilation and Energy performance)

INIVE was founded in 2001. INIVE is a registered European Economic Interest Grouping (EEIG), whereby from a legal viewpoint its full members act together as a single organisation and bring together the best available knowledge from its member organisations. The present full members are all leading organisations in the building sector, with expertise in building technology, human sciences and dissemination/publishing of information. They also actively conduct research in this field - the development of new knowledge will always be important for INIVE members.

INIVE has multiple aims, including the collection and efficient storage of relevant information, providing guidance and identifying major trends, developing intelligent systems to provide the world of construction with useful knowledge in the area of energy efficiency, indoor climate and ventilation. Building energy-performance regulations are another major area of interest for the INIVE members, especially the implementation of the European Energy Performance of Buildings Directive.

With respect to the dissemination of information, INIVE EEIG aims for the widest possible distribution of information.

The following organisations are members of INIVE EEIG (www.inive.org):

[BBRI](#) - Belgian Building Research Institute - Belgium

[CETIAT](#) - Centre Technique des Industries Aérauliques et Thermiques - France

[CSTB](#) - Centre Scientifique et Technique du Bâtiment - France

[IBP](#) - Fraunhofer Institute for Building Physics - Germany

[SINTEF](#) - SINTEF Building and Infrastructure - Norway

[NKUA](#) - National & Kapodistrian University of Athens - Greece

[TNO](#) - TNO Built Environment and Geosciences, business unit Building and Construction - Netherlands

The following organisations are associated members.

[eERG](#) - End-use Efficiency Research Group, Politecnico di Milano, Italy



IEQ-GA (Indoor Environmental Quality – Global Alliance)

The Indoor Environmental Quality – Global Alliance (IEQ-GA) was started by six (6) member organizations in 2014 with the signing of a Memorandum of Understanding (MOU). The member organizations include: AIHA; AIVC; ASHRAE; AWMA; IAQA; REHVA. In 2018, IISHRAE joined as the seventh member organization. The mission of IEQ-GA is to provide a scientific and technical basis for an acceptable indoor environmental quality (thermal environment; indoor air quality; lighting; acoustic; etc.) to occupants in buildings and places of work around the world, and to make sure the knowledge from research on IEQ is implemented in practice by engineers and practitioners.

The objective of the IEQ-GA is to get the member organizations to think together, work together and speak with the same voice. Our emphasis is on communications, coordination, cooperation and collaboration between the member organizations on indoor environmental quality issues. The alliance is formed as an interdisciplinary, international working group of member organizations interested in indoor air quality, thermal comfort, lighting and acoustic science, technology, and applications to stimulate activities that will help in a significant way to improve the actual delivered indoor environmental quality in buildings.



REHVA (The Federation of European Heating, Ventilation and Air Conditioning associations)

REHVA, The Federation of European Heating, Ventilation and Air Conditioning associations founded in 1963, is an umbrella organization that represents over 120,000 HVAC designers, building services engineers, technicians and experts across 27 European Countries.

REHVA is dedicated to the improvement of the health, comfort and energy efficiency in all buildings and communities. The association provides its members with a strong platform for international professional networking, and knowledge exchange pursuing the vision of

improving health, comfort, safety and energy efficiency in all buildings and communities. It follows EU policy developments and represents the interests of its members in Europe and worldwide. This is achieved through the exchange of technical information, practical experience and research results by REHVA's working groups, seminars, publications and journal.



Event sponsors

The conference organizers are grateful to the following companies for their support to this event



Table of Contents

Facing the global overheating through mitigation and adaptation technologies - the role of ventilation <i>Mattheos Santamouris</i>	19
CurieuzeNeuzen: monitoring air quality together with 20.000 citizens <i>Sam De Craemer, Jordy Vercauteren, Frans Fierens, Wouter Lefebvre, Hans Hooyberghs, Filip Meysman</i>	20
Industry views on the future of ventilation <i>Yves Lambert</i>	23
Introduction: Why performance-based assessment methods? Overview of the needs and the possibilities <i>Gaëlle Guyot</i>	24
Performance-based assessment methods for ventilation systems: Overview of on-going work in France and in Europe <i>François Parsy, Gaëlle Guyot</i>	30
Performance-based Spanish regulations relating to indoor air quality <i>Pilar Linares, Sonia García</i>	33
Challenges and limitations of performance based approaches: the Belgian experience <i>Samuel Caillou, Sébastien Pecceu</i>	35
Demand controlled ventilation: Sensitivity and robustness of the performances <i>Xavier Faure</i>	38
Applicability of a simple and new airtightness measuring method and further comparisons with blower door measurements (<i>Peer reviewed paper</i>) <i>Timothy Lanooy, Niek-Jan Bink, Wim Kornaat, Wouter Borsboom</i>	40
Refined assessment and comparison of airtightness measurement of indoor chambers using the blower door and Pulse methods <i>Xiaofeng Zheng, Luke Smith, Adam Moring, Christopher J. Wood</i>	49
Evaluation of indoor pressure distributions in a detached house using the Pulse airtightness measurement technique <i>Yun-Sheng Hsu, Xiaofeng Zheng, Edward Cooper, Mark Gillott, Shin-Ku Lee, Christopher J. Wood</i>	60
Insights into the impact of wind on the Pulse airtightness test in a UK dwelling <i>Yun-Sheng Hsu, Xiaofeng Zheng, Dimitrios Kraniotis, Mark Gillott, Shin-Ku Lee, Christopher J. Wood</i>	70

Estimation of air leakage sizes in building envelope using high-frequency acoustic impulse response technique	80
<i>Benedikt Kölsch, Björn Schiricke, Jacob Estevam Schmiedt, Bernhard Hoffschmidt</i>	
Deviation of blower-door fans over years through the analysis of fan calibration certificates	90
<i>Valérie Leprince, Christophe Delmotte, Isabelle Caré</i>	
The AIVC of the 20th Century	104
<i>Martin Liddament</i>	
40 years of modeling airflows	114
<i>Iain Walker</i>	
The role of carbon dioxide in ventilation and IAQ evaluation: 40 years of AIVC	118
<i>Andrew Persily</i>	
HVAC and VOCs: interaction between building systems and indoor VOC concentrations	122
<i>Klaas De Jonge, Jelle Laverge</i>	
Alternative ducting options for balanced mechanical ventilation systems in multifamily housing	124
<i>Gabriel Rojas, Rainer Pfluger</i>	
Lessons learned from a ten-year monitoring in residential buildings equipped with humidity based demand controlled ventilation in France	127
<i>Gaëlle Guyot</i>	
Practical use of the Annex68 IAQ Dashboard	130
<i>Marc Abadie</i>	
Lessons learned from design and operation of ventilation systems in low-energy dwellings in the UK	133
<i>Esfand Burman</i>	
Moisture in indoor air: findings of 40 years	136
<i>Paula Wahlgren</i>	
Issues on humidity environment and health problem	138
<i>Hiroshi Yoshino, Kenichi Hasegawa</i>	
Fungal growth on timber frame houses	148
<i>Michiel Vanpachtenbeke, Liselotte De Ligne, Jan Van den Bulcke, Jelle Langmans, Joris Van Acker, Staf Roles</i>	

Big humidity data from smart ventilation systems	150
<i>Loes Lokere, Arnold Janssens, Steven Vandekerckhove, Ivan Pollet, Marc Delghust, Klaas De Jonge, Jelle Laverge</i>	
ByggaF - a method to include moisture safety in the construction process	152
<i>Kristina Mjörnell, Thorbjörn Gustavsson</i>	
Analysis of the effects of ventilation method on indoor humidity distribution and condensation by CFD method	160
<i>Fangyuan Zhang, Yuji Ryu</i>	
Performance of an advanced heat recovery ventilation system in the Canadian arctic (Peer reviewed paper)	168
<i>Justin Berquist, Carsen Banister, Dennis Kryz</i>	
Long-term performance and resiliency testing of a dual core energy recovery ventilation system for the Arctic	179
<i>Boualem Ouazia, Chantal Arsenault, Yunyi Li, Michael Brown, Gerald Kolsteren, Christopher Chisholm</i>	
Experimental investigation of frost formation on air to air counter flow heat exchanger in air handling unit and climatic influence on dry, wet, frost operation condition	189
<i>Michal Pomianowski, Rasmus Lund Jensen, Dzhanan Osman Metin, Nils Kristian Kure Rasmussen, Diana State</i>	
Efficiency of heat recovery ventilation in real conditions: feedback from several measurement campaigns	198
<i>Sébastien Pecceu, Samuel Caillou</i>	
Impact of ductwork leakage on the fan energy use and sound production of central mechanical ventilation units in houses	211
<i>Valérie Leprince, Marcus Lightfoot, Jelmer de Jong</i>	
The contribution of a solar air heater collector to the cooling load in a Building (Peer reviewed paper)	220
<i>Pavlos Toumpoulidis, Argiro Dimoudi, Panos Kosmopoulos, Stamatis Zoras</i>	
Evolution of ventilation strategies in air-conditioned buildings in Singapore - IAQ and energy perspectives	231
<i>Chandra Sekhar</i>	
Dynamic performance of displacement ventilation in a lecture hall (Peer reviewed paper)	234
<i>Natalia Lastovets, Kai Sirén, Risto Kosonen, Juha Jokisalo, Simo Kilpeläinen</i>	

Numerical modelling of large air-conditioned space: comparison of two ventilation systems	245
<i>Ali Alzaid, Maria Kolokotroni, Hazim Awbi</i>	
Proposal of optimal control method in order to reduce mutual interference of air conditioning indoor units	255
<i>Yuga Urata, Yasuyuki Shiraishi</i>	
Minimising the influence of the stack effect and wind on the operation of mechanical exhaust ventilation systems	263
<i>Romy Van Gaever, Samuel Caillou, Sébastien Pecceu</i>	
Multi-objective optimization of energy saving and thermal comfort in thermo active building system based on model predictive control	272
<i>Ogawa Yohei, Shiraishi Yasuyuki</i>	
Two case studies on ventilation for indoor radon control	280
<i>Justin Berquist, Liang Grace Zhou, Jeffrey Whyte, Yunyi Ethan Li, Mark Vuotari, Gang Nong</i>	
Influence of ventilation on radon concentration in a study case in Spain	290
<i>Pilar Linares-Alemparte, Sonia García-Ortega</i>	
Energy and indoor air quality analysis of mixed air and displacement ventilation systems	297
<i>Walid Chakroun, Sorour Alotaibi, Kamel Ghali, Nesreen Ghaddar</i>	
Investigation of the combined effect of indoor air stability and displacement ventilation on pollutant transport in human breathing microenvironment	305
<i>Xiaorui Deng, Guangcai Gong</i>	
Indoor environment and adverse health symptoms among children under home damp conditions	314
<i>Kenichi Hasegawa, Naoki Kagi, Nobuhiro Kanazawa, Jun Sakaguchi, Naohide Shinohara, Yasuyuki Shiraishi, Teruaki Mitamura, Jun Fukushima</i>	
Relationship between indoor allergen and occupants' allergic symptoms before and after moving in the house with the countermeasure against allergy	322
<i>Teruaki Mitamura, Kunio Dobashi, Hiroki Harasawa</i>	
Learning performance in odor environment with aroma oils: influence of odor of essential oils on learning performance in classroom	328
<i>Aya Eto, Narae Choi, Toshio Yamanaka, Akihisa Takemura, Tomohiro Kobayashi</i>	

A large-scale longitudinal indoor air quality study: is low-cost sensor deployment a viable approach?	338
<i>James A. McGrath, Alison Connolly, Miriam A. Byrne</i>	
An argument for a reality check in the ventilation industry: We still have an energy crisis, in practice, and are not generally, in practice, achieving better indoor climate	347
<i>Sergio George Fox</i>	
Status of air filter energy performance and product characteristics	358
<i>Kiyan Vadoudi, Gregory Kelijian</i>	
Influence of building envelope's solar reflectivity, wind speed and building coverage ratio on urban heat environment	365
<i>Haruto Kitakaze, Jihui Yuan, Toshio Yamanaka, Tomohiro Kobayashi</i>	
The influence of external environment characteristics on the heating and cooling load of super-tall residential building	375
<i>Hyoeng-Tae Kim, Hee-Gang Kim, Chang-Ho Jeong, Myoung-Souk Yeo</i>	
Improvement method of thermal environmental near windows during heating period-thermal and air flow characteristics of two-dimensional jet from breeze line diffuser in free field	382
<i>Shaoyu Sheng, Toshio Yamanaka, Tomohiro Kobayashi, Jihui Yuan, Masahiro Katou, Saori Yumino</i>	
Airtightness and energy impact of air infiltration in residential buildings in Spain (Peer reviewed paper)	394
<i>Irene Poza-Casado, Alberto Meiss, Miguel Ángel Padilla-Marcos, Jesús Feijó-Muñoz</i>	
Exist'air: airtightness measurement campaign and ventilation evaluation in 117 pre-2005 French dwellings	402
<i>Sylvain Berthault, Lucille Labat, Cédric Delahais, Elodie Héberlé, Sabrina Talon</i>	
New findings on measurements of very airtight buildings and apartments	412
<i>Stefanie Rolfsmeier</i>	
Comparison between infiltration rate predictions using the divide-by-20 rule of thumb and real measurements	420
<i>Alan Vega Pasos, Xiaofeng Zheng, Mark Gillott, Christopher J. Wood</i>	
On the experimental validation of the infiltration model DOMVENT3D	430
<i>Alan Vega Pasos, Xiaofeng Zheng, Benjamin Jones, Mark Gillott, Christopher J. Wood</i>	

How accurate is our leakage extrapolation? Modeling building leakage using the Darcy-Weisbach equation	440
<i>Steven Rogers</i>	
Vertical distribution of temperature and contaminant concentration in a room with impinging jet ventilation system	453
<i>Mako Matsuzaki, Tomohiro Kobayashi, Toshio Yamanaka, Narae Choi, Haruna Yamasawa</i>	
Analysis of convective heat transfer coefficient correlations for ventilative cooling based on reduced-scale measurements	463
<i>Katarina Kosutova, Christina Vanderwel, Twan van Hooff, Bert Blocken, Jan Hensen</i>	
Overheating reduction in a house with balanced ventilation and postcooling	471
<i>Bart Cremers</i>	
Modelling thermal comfort and energy consumption of a typical mixed-cooling apartment in Guilin, China	476
<i>Jie Han, Wenheng Zheng, Guoqiang Zhang</i>	
Comfort at hospital reception desks	483
<i>R. M. J. Bokel, P. J. W. van den Engel, A. M. Eijkelenboom, M. A. Ortiz Sanchez</i>	
Prediction of the influence of solar radiation on adaptive thermal comfort using CFD simulation	493
<i>Juti Hu, Ge Song, Guoqiang Zhang</i>	
Developing a new passive tracer gas test for air change rate measurement (Peer reviewed paper)	507
<i>Sarah L. Paralovo, Maarten Spruyt, Joris Lauwers, Borislav Lazarov, Marianne Stranger, Jelle Laverge</i>	
Measuring the ventilation rate in occupied buildings and adapting the CO₂ tracer gas technique	517
<i>Jessica Few, Clifford Elwell</i>	
Airtightness and non-uniformity of ventilation rates in a naturally ventilated building with trickle vents	527
<i>Jessica Few, David Allinson, Clifford Elwell</i>	
Effects of outdoor environment on air exchange rate	537
<i>Maria Marrero, Manuel Gameiro da Silva, Leslie Norford</i>	
Successive indoor air pressure calculation method for natural ventilation rate prediction	545
<i>Haruna Yamasawa, Toshio Yamanaka, Tomohiro Kobayashi, Jihui Yuan</i>	

Using CFD simulation to improve estimation of wind pressure coefficient for naturally-ventilated buildings in tropical climate <i>Matthieu Zubialde-Elzaurdia, Franck Lucas, Alain Bastide</i>	555
Experimental study of the combination of a positive input ventilation and active air vents on the air change rates of a house (Peer reviewed paper) <i>Antoine Leconte, Clément Lafféter, Thomas Fritsch, Nicolas Giordano, Julien Escaich, Ophélie Ouvrier Bonnaz</i>	564
An investigation of ventilation control strategies for louver windows in different climate zones (Peer reviewed paper) <i>Leonie Scheuring, Bernhard Weller</i>	574
Cooling performance of air-conditioning system with ceiling suspended packaged air conditioning unit over divided-type membrane ceilings in large classroom <i>Shogo Ito, Toshio Yamanaka, Tomohiro Kobayashi, Jihui Yuan, Narae Choi</i>	585
Modelling of supply air jet from diffusers of four-way packaged air-conditioner for CFD analysis on unsteady airflow in room <i>Norikazu Yasuda, Toshio Yamanaka, Tomohiro Kobayashi, Jihui Yuan, Choi Narae</i>	595
Multi-objective design of single room ventilation units with heat and water recovery (Peer reviewed paper) <i>Antoine Parthoens, Luc Prieels, Jean-Jacques Embrechts, Yves Detandt, Sébastien Pecceu, Samuel Gendebien, Vincent Lemort</i>	605
Review of building services solution fitted for a low emission building stock in urban areas <i>Matthias Haase, Øystein Rønneseth, Kari Thunshelle, Laurent Georges, Sverre Holøs, Judith Thomsen</i>	615
Comparative life-cycle assessment of constant air volume, variable air volume and active climate beam systems for a Swedish office building <i>Nadeen Hassan, Saqib Javed</i>	627
Enhancing thermal comfort and indoor air quality in Australian school classrooms <i>Shamila Haddad, Afroditi Synnefa, Miguel Ángel Padilla Marcos, Riccardo Paolini, Deo Prasad, Mattheos Santamouris</i>	637
Indoor air and environmental quality in social housing dwellings in Australia <i>Shamila Haddad, Afroditi Synnefa, Riccardo Paolini, Mattheos Santamouris</i>	645

Radiant heating and cooling systems combined with displacement ventilation in schools; strategies to improve IAQ	653
<i>Michel Tardif, Sébastien Brideau</i>	
The evaluation of real-time indoor environment parameters measured in 297 Chilean dwellings (Peer reviewed paper)	662
<i>Constanza Molina, Amy Jackson, Benjamin Jones</i>	
Ventilation and measured IAQ in new US homes (Peer reviewed paper)	672
<i>Iain Walker, Brett Singer, Rengie Chan</i>	
Overview of model based control strategies for ventilation systems	679
<i>Bart Merema, Maarten Sourbron, Hilde Breesch</i>	
Predictive control for an all-air ventilation system in an educational nZEB building	683
<i>Bart Merema, Dirk Saelens, Hilde Breesch</i>	
Model based design of intelligent ventilation concepts	693
<i>Koen Maertens</i>	
A case study on residential mixed-mode ventilation using the ventilation controls virtual test bed	694
<i>Bert Belmans, Dorien Aerts, Stijn Verbeke, Amaryllis Audenaert, Filip Descamps</i>	
Influence of the external pressure tap position on the airtightness test result	704
<i>Jiří Novák</i>	
Airtightness of buildings - considerations regarding place and nature of pressure taps	706
<i>Christophe Delmotte</i>	
Quantification of uncertainty in zero-flow pressure approximation (Peer reviewed paper)	713
<i>Martin Prignon, Arnaud Dawans, Geoffrey van Moeseke</i>	
Designing a model-scale experiment to evaluate the impact of steady wind on building air leakage measurements	723
<i>Adeline Bailly Mélois, Anh Dung Tran, Mohamed El Mankibi, François Rémi Carrié, Bassam Moujalled, Gaëlle Guyot</i>	
CFD modelling of fan pressurization method in buildings - The impact of dynamic wind on airtightness tests	729
<i>Dimitrios Kraniotis, Arnab Chaudhuri</i>	
Using co-simulation between EnergyPlus and CONTAM to develop IAQ and energy-centric demand-controlled ventilation systems	730
<i>Maria Justo Alonso, W. Stuart Dols, Hans Martin Mathisen</i>	

Performances of a demand-controlled mechanical supply ventilation system under real conditions: indoor air quality and power distribution for thermal comfort	741
<i>Clement Laffeter, Xavier Faure, Michele Potard, Claude Bardoul, Julien Escaich, Ophelie Ouvrier Bonnaz, Etienne Wurtz</i>	
Large-scale performance analysis of a smart residential MEV system based on cloud data	751
<i>Bavo De Maré, Stijn Germonpré, Jelle Laverge, Frederik Losfeld, Ivan Pollet, Steven Vandekerckhove</i>	
Individualised dynamic model-based monitoring of occupant's thermal comfort for adaptive HVAC controlling	766
<i>Ali Youssef, Nicolás Caballero, Jean-Marie Aerts</i>	
Assessment of long-term and mid-term building airtightness durability: field study of 61 French low energy single-family dwellings	776
<i>Bassam Moujalled, Sylvain Berthault, Andrés Litvak, Valérie Leprince, Gilles Frances</i>	
Assessment of the durability of airtightness products in laboratory controlled conditions: development and presentation of the experimental protocol	788
<i>Andrés Litvak, Fabien Allègre, Bassam Moujalled, Valérie Leprince</i>	
Moisture impact on dimensional changes and air leakage in wooden buildings	801
<i>Paula Wahlgren, Fredrik Domhagen</i>	
Association between indoor air quality and sleep quality	811
<i>Chenxi Liao, Marc Delghust, Jelle Laverge</i>	
Measurements of sleep quality with low-cost sleep monitors: Effect of bedroom air quality and sleep quality	821
<i>Pawel Wargocki</i>	
CO₂-concentration of the surrounding air of sleeping infants inside a crib (Peer Reviewed Paper)	822
<i>Gert-Jan Braun, Wim Zeiler</i>	
Quality framework for residential ventilation systems in Flemish region in Belgium - feedback after three years' experience	832
<i>Maarten De Strycker, Liesje Van Gelder, Martyna Andrzejewicz, Valérie Leprince</i>	
Commission and performance contracting of ventilation systems in practice. Determination, analyses and consequences for practitioners and contractors	843
<i>Wouter Borsboom, Wim Kornaat, Pieter van Beek, Niek-Jan Bink, Timothy Lanooy</i>	

Test of new analysis methodologies to assess dynamic airflow rate with the tracer gas decay method	852
<i>Gabriel Remion, Bassam Moujalled, Mohamed El Mankibi</i>	
Reliability of ductwork airtightness measurement: impact of pressure drop and leakage repartition on the test result	860
<i>Sylvain Berthault, Valérie Leprince</i>	
Techniques to estimate commercial building infiltration rates	874
<i>Andrew Persily, Lisa Ng, W. Stuart Dols, Steven Emmerich</i>	
Wind pressure coefficient and wind velocity around buildings in high density block of metropolis for natural ventilation design	883
<i>Toshio Yamanaka, Eunsu Lim, Tomohiro Kobayashi, Toshihiko Sajima, Kanji Fukuyama</i>	
Alternative solution proposal to improve the air change in light shafts based on flaps	893
<i>Ángel Padilla-Marcos Miguel, Alberto Meiss, Raquel Gil-Valverde, Irene Poza-Casado, Jesús Feijó-Muñoz</i>	
Probabilistic modelling of wind induced air exchange in buildings	903
<i>Krystyna Pietrzyk</i>	
Impact of an occupancy and activity based window use model on the prediction of the residential energy use and thermal comfort	912
<i>Silke Verbruggen, Marc Delghust, Jelle Laverge, Arnold Janssens</i>	
Ambient air filter efficiency in airtight, highly energy efficient dwellings - A simulation study to evaluate benefits and associated energy costs	920
<i>Gabriel Rojas</i>	
Out2In: impact of filtration and air purification on the penetration of outdoor air pollutants into the indoor environment by ventilation	932
<i>Joris Van Herreweghe, Samuel Caillou, Tom Haerinck, Johan Van Dessel</i>	
Future trends in laboratory methods to predict HVAC in service filter performance	941
<i>Jesús Marval, Luis Medina, Emanuele Norata, Paolo Tronville</i>	
A study of the influence of the position of a chimney terminal on the vertical walls of a building on the air quality of the ventilation air supply	951
<i>Xavier Kuborn, Sébastien Pecceu</i>	
When the EPR hits the fan, or...the killing of the fan energy	962
<i>Ad van der Aa, Per Heiselberg, Willem de Gids</i>	

Existing standards for testing gas phase air cleaners <i>Paolo Tronville</i>	973
Methods to evaluate gas phase air-cleaning technologies <i>Pawel Wargocki</i>	974
Development of subjective evaluation tool of work environment for office workers' work performance and health promotion <i>Yuko Abe, Yasuyuki Shiraishi, Toshiharu Ikaga, Yoshihisa Fujino</i>	975
Evaluation potential of indoor environments' ecological valency <i>(Peer reviewed paper)</i> <i>Ardeshir Mahdavi, Helene Teufl, Christiane Berger</i>	985
Residential application of an indoor carbon dioxide metric <i>Andrew Persily, Brian J. Polidoro</i>	995
Trade-offs between ventilation rates and formaldehyde concentrations in new-build dwellings in the UK <i>Esfand Burman, Samuel Stamp</i>	1008
Modeling dynamic behavior of volatile organic compounds in a zero energy building <i>(Peer reviewed paper)</i> <i>Klaas De Jonge, Jelle Laverge</i>	1019
Indoor air quality in nearly zero energy buildings, reduction of exposure <i>Piet Jacobs, Wouter Borsboom, Willem de Gids</i>	1029
Better implementation of ventilative cooling (cooling of buildings using outside air as main source) in national building standards, legislation and compliance tools <i>Christoffer Plesner, Jannick K. Roth, Per Heiselberg</i>	1038
Ventilative cooling - time for large scale implementation? <i>Per Heiselberg</i>	1041

Numerical Modelling of Large Air-Conditioned Space: Comparison of Two Ventilation Systems

Ali Alzaid^{*1}, Maria Kolokotroni^{*1}, Hazim Awbi²

*1 College of Engineering, Design and Physical
Science, Brunel University London
Uxbridge, Middlesex UB8 3PH, UK
AliMohammadA.Alzaid@brunel.ac.uk
Maria.kolokotroni@brunel.ac.uk*

*2 School of Built Environment,
University of Reading
Reading RG6 6AY, UK*

ABSTRACT

This paper presents a comparative study based on CFD simulation between the performance of Impinging Jet Ventilation (IJV) and Mixing Ventilation (MV) systems in providing indoor air quality and thermal comfort for a mechanically ventilated occupied large open plan office (floor-to-ceiling height > 5m). Large spaces differ from spaces with standard heights because of the significant upward stratification. The evaluation was carried out using the Air Distribution Index (ADI) which combines several parameters, such as overall ventilation effectiveness for removing pollutants and for temperature distribution ($\bar{\epsilon}_c, \bar{\epsilon}_t$), percentage of dissatisfied (PD) and predicted percentage of dissatisfied (PPD). ADI has been used to characterize ventilation systems in spaces with typical floor-to-ceiling heights, but it has not been studied for large spaces to-date. In this study, different test conditions were considered for two cooling loads (48 W/m², 68 W/m²) with full and half occupancy respectively. The model was validated via spot measurements of air temperature, air speed and CO₂ concentration in a large office located in south east England which, is supplied by a mechanical cooling with overhead diffusers providing mixing ventilation. The predicted results were generally in good agreement with measured values of air temperature, air velocity and CO₂ concentration. The calculated (ADI) for (IJV) and (MV) systems using the validated CFD model showed that the (IJV) system is more effective than (MV) system in removing both pollutants and heat from the occupied zone. It is concluded that using (ADI) to assess the effectiveness of different ventilation systems in large enclosures can provide useful information that combines both indoor air quality and thermal comfort.

KEYWORDS

Large space, Ventilation system, Air Distribution Index (ADI), Numerical model

1. INTRODUCTION

Large single cell spaces have become a considerable characteristic of modern buildings. Examples include shopping malls, lecture theatres, airports terminals, gymnasiums and large open plan offices. They are considered to be large when the floor-to-ceiling height is more than 5 meters (Li *et al.*, 2009). Ventilation of such spaces needs more careful attention by design engineers than spaces with a small volume, i.e. those with a ceiling height of 3 meters or less. This is because the volume of the occupied zone is generally small compared to the entire volume. Therefore specific ventilation strategies which direct the ventilated air and thermal conditioning to the occupied zone are needed to achieve energy efficiency (International Energy Agency (IEA), 1998). Heating, ventilation and air conditioning systems (HVAC) are used to supply the spaces with acceptable levels of air temperature, humidity, air velocity and acceptable indoor air quality by removing the contaminants from the spaces. Therefore, the implementation of a suitable air distribution system will have a significant impact on the air flow patterns and indoor air quality within the ventilated space. To characterise the combined thermal environment and indoor air quality in buildings, Awbi and Gan (1993) and Awbi (1998) developed the concept of the ventilation performance (VP) which

was re-named later the Air Distribution Index (ADI) (Awbi, 2003; Karimipanah, Awbi and Moshfegh, 2008). This index is used to assess the thermal comfort, indoor air quality and energy performance of an air distribution system. In 2017, an extensive literature survey was carried out on studies of HVAC systems' performance in large rooms, which found that only three types of room air distribution strategies are used in large rooms. These are displacement ventilation (DV), mixing ventilation (MV) and underfloor air distribution systems (UFAD) (Mateus and Carrilho da Graça, 2017). Also, a fourth system, impinging jet ventilation (IJV) which has been evaluated only in two recent studies by Ye *et al.* (2016) and (Ye *et al.*, 2019) when it was used in the ventilation of a large space. It is traditionally used in typical spaces and described as having promising potential for large spaces.

This paper aims to evaluate the performance of two different ventilation systems: Impinging Jet Ventilation (IJV) and Mixing Ventilation (MV) systems in providing indoor air quality and thermal comfort and consequently energy performance for a mechanically ventilated occupied large open plan office (floor-to-ceiling height > 5m). The Air Distribution Index (ADI) will be used to characterize ventilation systems in large spaces for the first time since it has been studied only in spaces with typical floor-to-ceiling heights.

2. NUMERICAL METHOD

2.1 Physical Models

The large space under consideration is a large open plan office used by research staff and students which has floor-to-ceiling height of 6m is the CSEF Building at Brunel University London. The enclosure has dimensions of 15.5m x 14m x 6m and a floor area of 201 m^2 with brick external walls and metallic roof which includes two large skylights. Two big rectangle windows are located on the south side wall of the building with dimensions 3.5m x 1.1m and 4.2m x 1.1m. There is one door on each end wall of the building. For the MV simulation, the external air is delivered into the building interior through a 13m long cylindrical supply duct with a 0.7m diameter. This duct has eight air diffusers located at a height of 3.7 m above the floor with a dimension of 0.8m x 0.15m. Air exhaust is via two return grills located at a height of 3.7m with dimensions 1.0m x 0.5m each, see Figure 1. For the IJV simulation, the supply air is delivered into the building interior through 21 IJV ducts each with a supply opening area of 0.03 m^2 and a distance of 0.7 m above the floor were uniformly distributed inside the office, as recommended by Awbi (2003). 17 IJ diffusers were attached to the walls while the remaining 4 were attached to a column at the centre of the office, as shown in Figure 2.

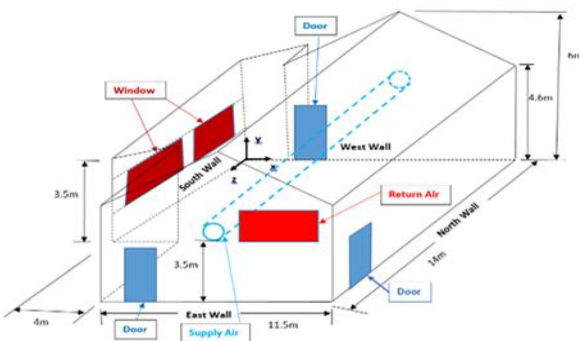


Figure 1: Sketch of the researchers' office with the MV

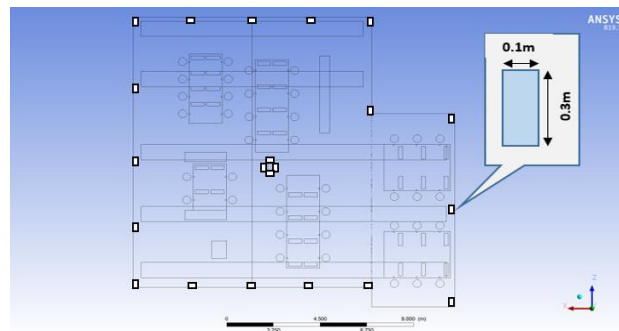


Figure 2: Plan sketch of the researchers' office with the IJV

In this study two different test cases were considered for two occupancy capacity loads; full occupancy (Case F) and half occupancy (Case H) for summer conditions. On this basis, the office was modelled to have 40 and 20 researchers as a full and half occupancy loads along with their computers respectively.

ANSYS Workbench Design Modeller 17.1 with Fluent 17.1 (ANSYS Fluent, 2016) was used to simulate the large space case-study (the researchers' office) at CSEF building. Some simplification of the geometrical model was made to save computing time and power while still preserving the most relevant physical aspects of the geometry. For instance, The body of the occupant was presented as a cylinder of height 1.4m and diameter of 0.4m giving a body surface area of approximately 1.8 m² according to (Pinkel, 1958).

2.2 Numerical Model

The finite-volume solver Fluent 17.1 was used to simulate the flow field of the ventilated enclosure, the governing equations were solved with a segregated scheme, and the SIMPLE algorithm was used for coupling the pressure and velocity. In the discretization scheme, the non-linear and the viscous terms were calculated with the second order upwind scheme while the BODY FORCE WEIGHTED scheme was used to reveal convergence when two consecutive iterations for the local airflow variable was less than 10⁻³ whereas for energy when it was less than 10⁻⁶. Besides that, the net heat flow rate imbalance was less than 0.003% of the total flux through the system, and the net heat imbalance was less than 0.3% of the total energy flux through the system too.

Several turbulence models can be used for the simulation of turbulent flow. Reynolds-averaged Navier-Stokes (RANS) equation simulation using one or two-equation turbulence models such as RNG k-ε models, SST k-ω model and Reynolds Stress model (RSM) are often used. In fact, the performance of both RNG k-ε and SST k-ω models were compared in the large space by utilising the temperature and air velocity measurements in our previous study (Alzaid, Kolokotroni and Awbi, 2017). The prediction from SST k-ω shows better agreement with measurements in comparison with RNG k-ε model. Hence, the SST k-ω model was used in the present study to predict the turbulent features of air flow within the researchers' office.

Since CO₂ cannot be absorbed or filtered, it can be utilised as a good index for indoor air quality (Oke *et al.*, 2008). The CFD model was developed to predict the metabolic CO₂ distribution within the case-study building. The rate of production of carbon dioxide CO₂ by the human's respiratory system is associated with the metabolic rate as given by the following equation (MacIntyre, 1980):

$$G = 4 \times 10^{-5} MA \quad (1)$$

where G is the CO₂ production in (L/s), M is the metabolic rate in (W/m²) and A is the body surface in (m²). In this study, an average sedentary adult produces around 0.005 L/s of CO₂ by the respiratory system.

To represent the CO₂ production per person in the CFD model, a separate cell zone shaped as a cube (5 x 5 x 5 cm) was used for modelling species transport. One mass CO₂ source term was added to that cells zone. Therefore, for $G = 0.005$ L/s $\approx 9.9 \times 10^{-6}$ kg/s and as it was presented by a cube with a volume of 1.25×10^{-4} m³, then the CO₂ production per person in the CFD model is 9.9×10^{-6} kg/s divided by 1.25×10^{-4} m³ which leads to 0.0792 kg/m³s. Consequently, the CO₂ source term is added in the conservation of the CO₂ mass fraction equation.

2.3 Boundary Conditions

The required supply air flow rates for the modelled office of full and half occupancy were calculated from the following equation (Tymkow *et al.*, 2013; BS EN 16798-3, 2017):

$$\dot{m} = \frac{\dot{q}}{c_p(t_e - t_\infty)} \quad (2)$$

where \dot{q} is the thermal load in (W), \dot{m} is the mass rate of air flow (kg/s), c_p is the specific heat of air (J/kg.K), t_e is the air temperature of air exhaust ($^{\circ}\text{C}$) and t_∞ is the air temperature of air supply ($^{\circ}\text{C}$).

To use the above equation, the thermal load \dot{q} can be calculated using HAP 4.9 (hourly analysis program) which is a microcomputer program developed by Carrier Corporation (Carrier, 2010). Therefore, from HAP the cooling loads for the modelled office were calculated to be 68 W/m^2 and 48 W/m^2 for full and half occupancy respectively. Consequently, the calculated supply air flow rates using equation (2) are $2.6 \text{ m}^3/\text{s}$ (65 l/s) and $1.7 \text{ m}^3/\text{s}$ (85 l/s) for full and half occupancy, respectively. Thus, for the mixing ventilation system, the corresponding diffuser supply velocities were 2.7 m/s for full occupancy and 1.8 m/s for half occupancy. For the impinging jet ventilation system, the corresponding supply velocities were 4.1 m/s for full occupancy and 2.7 m/s for half occupancy.

Due to the high demand of energy needed to cool and dehumidify the outdoor air, recirculating part of the conditioned air is recommended as an essential aspect of energy conservation strategies in many parts of the world (Fadeyi *et al.* 2009). Many HVAC designers use the recirculated air after mixing it with fresh air then supply it to space after it has been filtered and cooled. In this study, the recirculating air that was contaminated with CO_2 was considered in both cases presented in this section. To find the CO_2 concentration for recirculating air, the supply flow rate ($2.6 \text{ m}^3/\text{s}$) was used for this study after adding CO_2 source terms in the model to represent the CO_2 production per person. At the start, only fresh air (10 L/s) per person as recommended by ASHRAE standard 62.1 (American Society of Heating, 2016) with 400 ppm CO_2 concentration was used as a supply air flow rate. Then, the CO_2 concentration of the air at the exhaust was determined from the CFD output, which was 808 ppm. Consequently, the CO_2 concentration of the new supply air, which is a mixture of fresh and recirculated air was calculated to be 745 ppm, as shown in Figure 3.

A similar procedure was used to find the CO_2 concentration for recirculated air for the modelled office with half occupancy. The CO_2 concentration of the recirculated air was 686 ppm; while it was 652 ppm for the new supply air, which is a mixture of fresh and recirculated air.

Table 1 summarises the two cases which were used to compare the performance of the MV and IJV systems. It is worth mentioning that according to BS EN 16798-1 (BSI, 2019), the recommended range of the mean design operative temperature for energy saving in open plan offices is (20 – 24 $^{\circ}\text{C}$) and (22 – 27 $^{\circ}\text{C}$) for heating and cooling seasons respectively. Moreover, a study by (Seppanen, Fisk and Lei, 2006) recommended that the highest productivity in the office environment is at a temperature of around 22 $^{\circ}\text{C}$. Therefore, in this study, the air supply temperatures presented in the table below were set by an iterative procedure to achieve a rather steady temperature condition of 22.3 $^{\circ}\text{C} \pm 0.4^{\circ}\text{C}$ in the occupied zone of the office building for providing accurate comparisons.

Therefore, the boundary conditions of Case F and Case H for both MV and IJV systems as flowing:

- a. The condition of the air supply is set in the CFD model at values, as shown in Table 1.
- b. The boundary conditions for the surfaces temperature of all the office walls were (28 $^{\circ}\text{C}$), ceiling (35 $^{\circ}\text{C}$), windows (39 $^{\circ}\text{C}$), occupants clothing (33.7 $^{\circ}\text{C}$), personal computers (40 $^{\circ}\text{C}$),

lighting (40°C) and photocopier (40°C) which have been derived from the measurements by (Alzaid, Kolokotroni and Awbi, 2017).

Table 1: CFD cases used for the MV and IJV system performance comparison

Case name		Case F		Case H	
Occupancy		Full		Half	
Distribution system		MV	IJV	MV	IJV
Flow rate (m ³ /s)		2.6	2.6	1.7	1.7
Diffusers	Number	8	21	8	21
	Area (m ²)	0.12	0.03	0.12	0.03
	Velocity (m/s)	2.7	4.1	1.8	2.7
	Temperature (°C)	18	19	19	20
	CO ₂ (ppm)	745	745	652	652

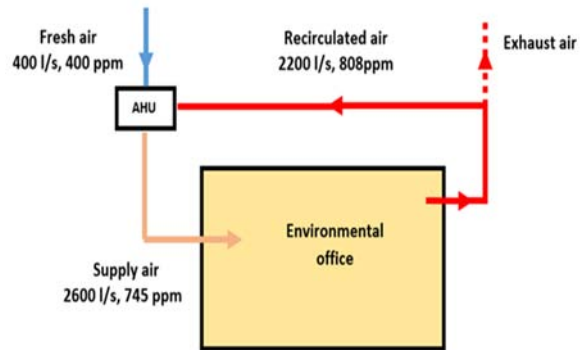


Figure 3: Recirculation system of the modelled office for full occupancy

2.4 Validation of the CFD Model and Computational Grid

The current CFD model for predicting the thermal and airflow fields in a large space is validated with experimental data in our previous study (Alzaid, Kolokotroni and Awbi, 2017). The ANSYS code was used to construct the three-dimensional geometry and generate the mesh. The present study adopted the same mesh strategy as the one used in the validation study, see (Alzaid, Kolokotroni and Awbi, 2017), i.e., non-uniform grid strategy was utilised to cover the whole computational domain for the room. The finer grid was used close to air inlets, outlets and walls, and also in the areas that were anticipated to have steep velocity gradients. Based on that, the total grid size generated for case F and Case H was (16,853,380) and (15,824,322), respectively.

2.5 Air distribution Index (ADI)

The overall ventilation effectiveness for the removal of pollutants ($\bar{\epsilon}_c$) and the removal of heat ($\bar{\epsilon}_t$) are used to evaluate the effectiveness of an air distribution system and are defined as (BS EN 16798-3, 2017):

$$\bar{\epsilon}_c = \frac{C_e - C_\infty}{C_m - C_\infty} \quad (3)$$

$$\bar{\epsilon}_t = \frac{t_e - t_\infty}{t_m - t_\infty} \quad (4)$$

where C is contaminant concentration (p.p.m), t is the temperature (°C), subscripts e , ∞ and m denote exhaust, supply and mean value in the occupied zone. Even though high values of both the overall ventilation effectiveness for the removal of pollutants ($\bar{\epsilon}_c$) and for heat removal ($\bar{\epsilon}_t$) state a high efficiency of the ventilation system, they do not alone offer a strong indication of the air quality and thermal comfort in the occupied zone (Awbi, 2003). Awbi and Gan (1993) combined ($\bar{\epsilon}_c$) with Fanger's Percentage of Dissatisfied (PD) for air quality and ($\bar{\epsilon}_t$) with Fanger's Predicted Percentage of Dissatisfied (PPD) to define two new numbers that include the percentage of dissatisfied for air quality and thermal comfort, thus

$$N_c = \frac{\bar{\epsilon}_c}{PD} \quad (5)$$

$$N_t = \frac{\bar{\epsilon}_t}{PPD} \quad (6)$$

where N_c and N_t are air distribution number for air quality and thermal comfort respectively.

The expression for PD and PPD are as follow (Fanger 1988; BSI 2007)

$$PD = 395 \times EXP(-1.83v^{0.25}) \quad (7)$$

$$PPD = 100 - 95 \times EXP - \{0.03353(PMV)^4 + 0.2179(PMV)^2\} \quad (8)$$

Where \dot{v} is the outdoor air flow rate (L/s) per standard person and PMV is the Predicted Mean Vote as defined in ISO 7730 (BSI, 2005). The two numbers N_c and N_t have been combined to produce what they called the Air Distribution Index (ADI)(Awbi and Gan, 1993):

$$ADI = \sqrt{(N_c \times N_t)} \quad (9)$$

Achieving a value of $ADI \geq 10$ by a ventilation system designed for an acceptable value of 10% for both PD and PPD can be assumed to be a good air distribution system. However, a large value of ADI would not ensure the existence of a good air distribution system as unwanted local conditions might be still present. Consequently, ADI should be applied along with room temperature distribution and air movement measurements or predictions to evaluate the global and the local conditions particularly the presence of high or low temperature or local draughts regions within the occupied region (Awbi & Gan 1993; Awbi 1998).

3. RESULTS AND DISCUSSION

3.1 Comparison between the Performance of the MV and IJV Systems for Case F

Figures 4 to 6 illustrate the air velocity vectors, air temperature contours, CO₂ concentration contours on a lateral plane located in the middle of the office at $Z=6.6\text{m}$ for the MV and $Z=7.2\text{m}$ for the IJV systems for Case F.

From Figure 4 (a) it can be seen that the left supply jet for the MV system is spreading over the floor towards the south (external) wall after impinging on it. In addition, the hot sources and heat gain through the window generate thermal plumes causing considerable buoyancy forces which move the air up to the ceiling. This large and robust air circulation produces the least stratification level by the MV system compared to the IJV system. A cross-recirculation is created in different parts of the occupied zone for both the MV and IJV systems due to partitions and furniture, as shown in Figure 4 (a) and (b). The supplied air from two IJV diffusers spreads along the floor for about 3 m and decays as it moves onto the office floor, as can be seen in Figure 4 (b).

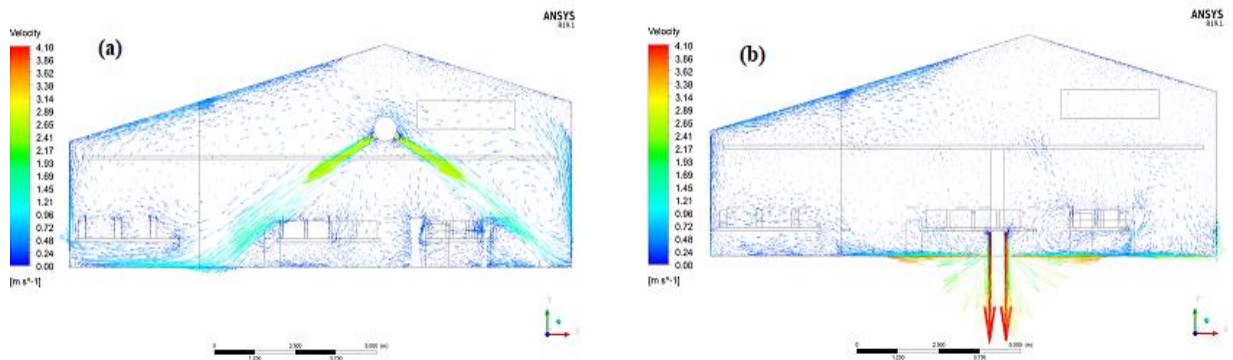


Figure 4: Velocity vector plots on a lateral plane located in the middle of the office for Case F: (a) MV system at $Z=6.6\text{ m}$ and (b) IJV system at $Z=7.2\text{ m}$.

Figure 5 (a) and (b) show that with the different supply air temperatures used, 18°C for the MV and 19°C for the IJV, the temperature field in both the MV and IJV systems are somewhat similar when the average temperature in the occupied area was maintained at the same level (22°C). Also, temperature stratification for the office is observed in both contours, which was very significant for IJV supplies, as shown in Figure 5 (b).

The predicted CO₂ concentration on a vertical plane located in the middle of the office for the MV and IJV systems are shown in Figure 6 (a) and (b), respectively. In Figure 6 (a), the concentration of CO₂ in a part of the occupied zone is higher than its mean value in that zone. This is because the supplied air is displaced downward and mixes with the office air apart from that areas covered by the obstructions such as tables. However, for IJV system, the concentration of CO₂ is generally uniform in the occupied zone within the range 750 and 800 ppm. Therefore the IJV system was more efficient in providing fresh air to the breathing zone than the MV system.

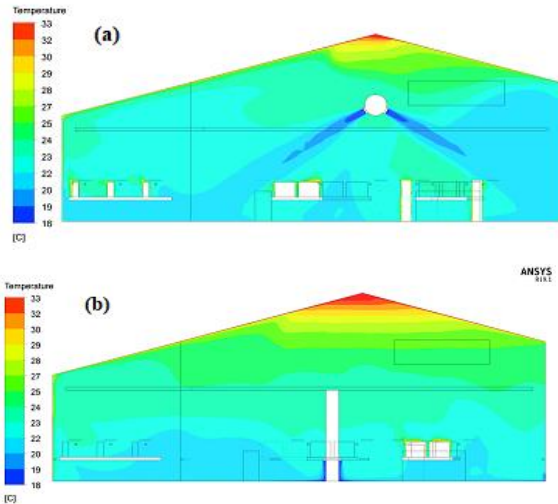


Figure 5: Temperature contour plots on a plane located in the middle of the office for Case F: (a) MV system at Z=6.6 m and (b) IJV system at Z=7.2 m

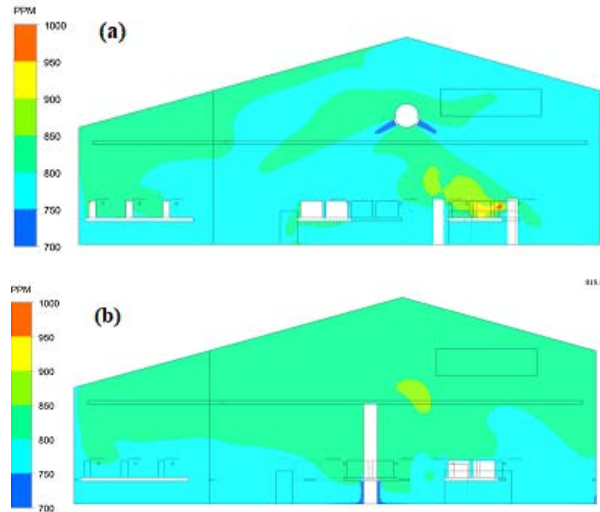


Figure 6: CO₂ concentrations contours on a plane located in the middle of the office for Case F: (a) MV system at Z=6.6 m and (b) IJV system at Z=7.2m

The predicted parameters were used to calculate the Air Distribution Index (ADI) for this case, as shown in Table 3. The IJV system was able to remove contaminants and heat ($\bar{\epsilon}_c, \bar{\epsilon}_t$) from the ventilated space more effectively than the MV system. Also, both air distribution numbers for air quality and for thermal comfort (N_c, N_t) were higher (better) for the IJV than for the MV system and consequently, it shows higher (better) ADI value. However, PPD values for both systems were too high because of dumping of cold and high velocity jet into the occupied zone.

Table 3: The predicted ADI for the MV and IJV systems for Case F

systems	Diffusers					$\bar{\epsilon}_c$	PD (%)	N_c	$\bar{\epsilon}_t$	PPD (%)	N_t	ADI
	No.	A (m ²)	V (m/s)	T (°C)	CO ₂ (ppm)							
MV	8	0.12	2.7	18	745	1.2	15.2	7.7	1.5	40	3.8	5.4
IJV	21	0.03	4.1	19	745	1.8	15.2	11.7	2.2	31	7.2	9.2

3.2 Comparison between the Performance of the MV and IJV Systems for Case H

Figure 7 to 9 show the air velocity vectors, air temperature contours, CO₂ concentration contours on a lateral plane located in the middle of the office at Z=6.6 m for the MV system and Z=7.2 m for the IJV system for case H. As can be seen from Figure 7 (a), a large clockwise air circulation is present on the left side of the office. The stable thermal stratification near the ceiling tends to slow down this circulation. Also, on the right side of the office, another extensive air recirculation was created with counter clockwise direction. In Figure 7 (b) for the IJV case, the heat sources

from the window and the left part of the ceiling created a strong buoyancy force which pushes the air up to the highest part of the office.

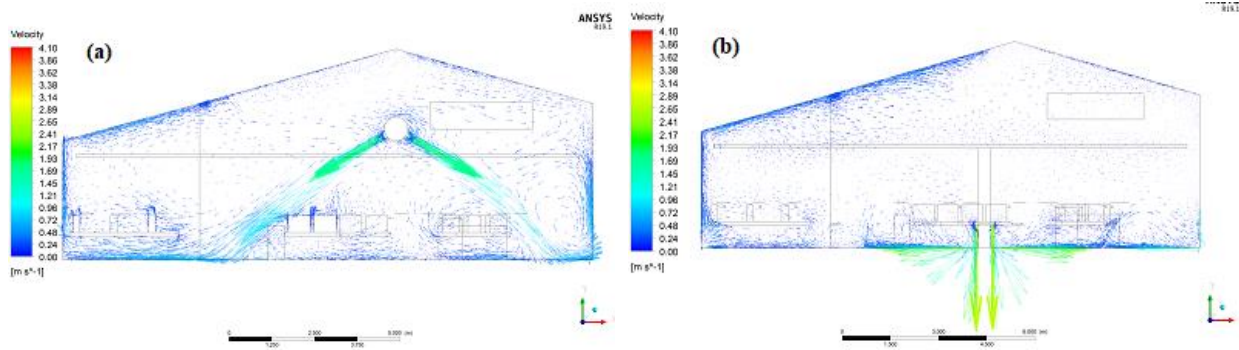


Figure 7: Velocity vectors on a lateral plane located in the middle of the office for Case H: (a) MV system at $Z=6.6$ m and (b) IJV system at $Z=7.2$ m.

Figure 8 (a) and (b) shows the temperature contours in the middle of the office and the temperature stratification in the case of MV and IJV systems. The mean air temperature in the occupied zone for the MV system is higher than that for the IJV system. This is because, in the IJV system, the cold jet over the floor has sufficient momentum to continue along the floor despite the heat sources due to the occupants. As for the MV system case, the cold jet momentum was not strong enough to produce good air mixing inside the office. Thus, $\bar{\epsilon}_t$ value was 1.75 for the MV system compared to 3.5 for IJV system (see table 4).

It is noticed that the occupied zone has a low and uniform CO_2 concentration for IJV system compared to that for the MV system, as shown in Figure 9 (a) and (b). As evidence of that, the overall ventilation effectiveness for contaminant removal ($\bar{\epsilon}_c$) value is 1.16 for the MV system compared to 2.35 for the IJV system (see table 4).

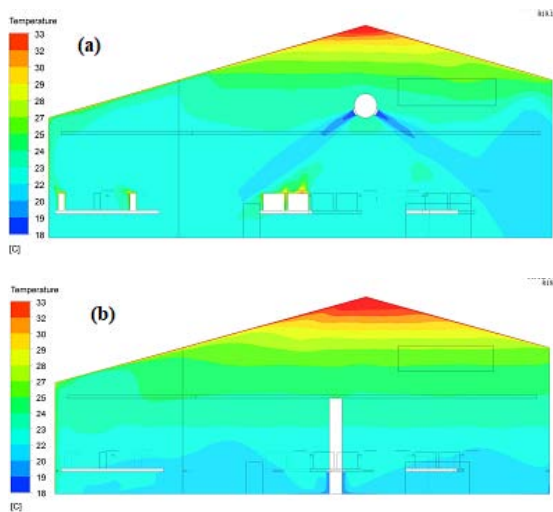


Figure 8: Temperature contour plots on a plane located in the middle of the office for Case H: (a) MV system at $Z=6.6$ m and (b) IJV system at $Z=7.2$ m

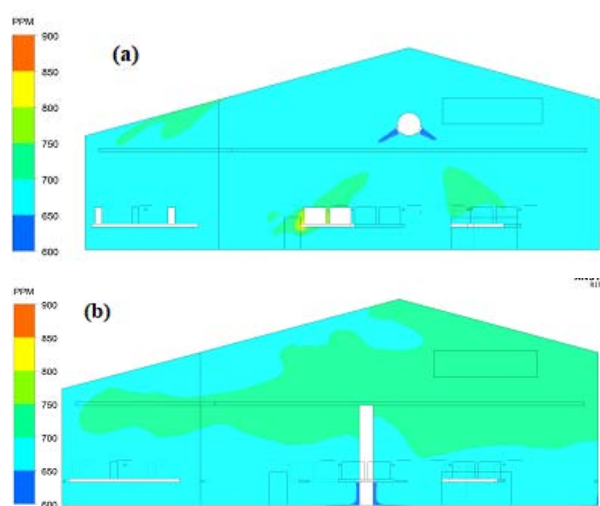


Figure 9: CO_2 concentrations contour on a plane located in the middle of the office for Case H: (a) MV system at $Z=6.6$ m and (b) IJV system at $Z=7.2$ m.

Table 4 shows the predicted ADI parameters for the MV and IJV systems for this case. From the table, it can be seen that the air distribution numbers for air quality, N_c , and thermal comfort, N_t , for the MV system were 7.7 and 6.7 respectively while they were double these values for the IJV system. Hence, the results reveal that the highest value of ADI was produced by the IJV system which was 15.

Table 4: The predicted ADI for the MV and IJV systems for Case H

systems	Diffusers					$\bar{\epsilon}_c$	PD (%)	N_c	$\bar{\epsilon}_t$	PPD (%)	N_t	ADI
	No.	A (m ²)	V (m/s)	T (°C)	CO ₂ (ppm)							
MV	8	0.12	1.8	19	652	1.2	15.2	7.7	1.8	26	6.7	7.2
IJV	21	0.03	2.7	20	652	2.4	15.2	15.4	3.5	24	14.6	15.0

4. CONCLUSION

The ventilation performance of the two air distribution systems used (MV and IJV) were examined by applying the Air Distribution Index (ADI) for the first time in large spaces. Based on the results obtained, the IJV system performed better than the MV system for all the conditions considered as it provided higher ADI values. Since the occupied zone temperature for the two systems was maintained at 22°C, the IJV system performed better than the MV system where the air supply temperature for the IJV system was higher by 1 °C than that for the MV system for both thermal load cases. Thus, the IJV system uses less power than the MV system and also performs better. In general, the ADI concept presented in this work could be a beneficial tool for evaluating a ventilation system performance in large spaces as it provides assessments for both air quality and thermal comfort.

5. REFERENCE

- Alzaid, A., Kolokotroni, M. and Awbi, H. (2017) 'Experimental and Numerical Investigation of Air Distribution in a Large Space', in. 38th AIVC International Conference.
- American Society of Heating, R. and A.-C. E. (2016) *Standard 62.1 User's Manual: Based on ANSI/ASHRAE Standard 62.1-2016, Ventilation for Acceptable Indoor Air Quality*. ASHRAE.
- ANSYS Fluent (2016) 'Thory guide'. ANSYS Inc.,
- Awbi, H. (2003) *Ventilation of buildings, Zhurnal Eksperimental'noi i Teoreticheskoi Fiziki*. doi: 10.1080/02786820490519234.
- Awbi, Hazim B. (1998) 'Calculation of convective heat transfer coefficients of room surfaces for natural convection', *Energy and Buildings*, 28(2), pp. 219–227. doi: 10.1016/S0378-7788(98)00022-X.
- Awbi, H B (1998) 'Energy efficient room air distribution', *Renewable Energy*. Elsevier, 15(1), pp. 293–299.
- Awbi, H. B. and Gan, G. (1993) 'Evaluation of the overall performance of room air distribution', in *Proceedings of the 6th International Conference on Indoor Air Quality and Climate, Helsinki*, pp. 283–288.
- BS EN 15251 (2007) 'Indoor environmental input parameters for design and assessment of energy performance of buildings- addressing indoor air quality , thermal environment , lighting and acoustics Contents', 3(BS EN 15251), pp. 1–50.
- BS EN 16798-3 (2017) *Energy performance of buildings — Ventilation for buildings Part 3: For non-residential buildings - Performance requirements for ventilation and room-conditioning*

systems (Modules M5-1, M5-4).

BSI (2005) 'BS EN ISO 7730: 2005: Ergonomics of the thermal environment Analytical determination and interpretation of thermal comfort using calculation of the PMV and PPD indices and local thermal comfort criteria', *Management*, 3, pp. 605–615. doi: 10.1016/j.soildyn.2004.11.005.

BSI (2019) 'BS EN 16798-1: 2019: Energy performance of buildings - Ventilation for buildings- Part 1: Indoor environmental input parameters for design and assessment of energy performance of buildings addressing indoor air quality, thermal environment, lighting and aco', (BS EN 16798-1).

Carrier (2010) 'hourly analysis program and system design load program'. NY: Syracuse.

Fadeyi, M. O., Weschler, C. J. and Tham, K. W. (2009) 'The impact of recirculation, ventilation and filters on secondary organic aerosols generated by indoor chemistry', *Atmospheric Environment*. Elsevier, 43(22–23), pp. 3538–3547.

Fanger, P. O. (1988) 'Introduction of the olf and the decipol units to quantify air pollution perceived by humans indoors and outdoors', *Energy and Buildings*, 12(1), pp. 1–6. doi: 10.1016/0378-7788(88)90051-5.

International Energy Agency (IEA) (1998) 'IEA Annex 26: Energy Efficient Ventilation of Large Enclosures - Technical Synthesis Report'.

Karimipannah, T., Awbi, H. B. and Moshfegh, B. (2008) 'The Air Distribution Index as an Indicator for Energy Consumption and Performance of Ventilation Systems', *Journal of the Human-Environment System*, 11(2), pp. 77–84. doi: 10.1618/jhes.11.77.

Li, Q. *et al.* (2009) 'CFD study of the thermal environment in an air-conditioned train station building', *Building and Environment*. Elsevier Ltd, 44(7), pp. 1452–1465. doi: 10.1016/j.buildenv.2008.08.010.

MacIntyre, F. (1980) 'The absorption of fossil-fuel CO₂ by the ocean', *Oceanologica Acta*, 3, pp. 505–516.

Mateus, N. M. and Carrilho da Graça, G. (2017) 'Simulated and measured performance of displacement ventilation systems in large rooms', *Building and Environment*. Elsevier Ltd, 114, pp. 470–482. doi: 10.1016/j.buildenv.2017.01.002.

Oke, S. A. *et al.* (2008) 'A mathematical modelling of the intensity of contaminants (CO₂) on occupancy level of a space in continuous use'. Inderscience Enterprises Limited.

Pinkel, D. (1958) 'The use of body surface area as a criterion of drug dosage in cancer chemotherapy.', *Cancer research*, 18(3), pp. 853–856.

Seppanen, O., Fisk, W. J. and Lei, Q. H. (2006) *Effect of temperature on task performance in office environment*. Ernest Orlando Lawrence Berkeley National Laboratory, Berkeley, CA (US).

Tymkow, P. *et al.* (2013) *Building services design for energy efficient buildings*. Routledge.

Ye, X. *et al.* (2016) 'Heating energy consumption of impinging jet ventilation and mixing ventilation in large-height spaces: A comparison study', *Energy and Buildings*. Elsevier B.V., 130, pp. 697–708. doi: 10.1016/j.enbuild.2016.08.055.

Ye, X. *et al.* (2019) 'Comparison study of contaminant distribution and indoor air quality in large-height spaces between impinging jet and mixing ventilation systems in heating mode', *Building and Environment*. Elsevier, p. 106159.