

Exploring the effect of chronotype on hippocampal volume and shape: A combined approach.

Journal:	<i>Chronobiology International</i>
Manuscript ID	LCBI-2018-0055
Manuscript Type:	Short Communications
Date Submitted by the Author:	07-Mar-2018
Complete List of Authors:	Horne, Charlotte; University of Roehampton, Psychology Norbury, Ray; University of Roehampton, Psychology
Keywords:	Chronotype, Hippocampus, Emotion, Depression, Emotion regulation, Morphology

SCHOLARONE™
Manuscripts

Only

Exploring the effect of chronotype on hippocampal volume

and shape: A combined approach.

Charlotte Mary Horne¹ and Ray Norbury^{1,2}

¹ Department of Psychology

University of Roehampton

² Address for correspondence:

Dr Ray Norbury

Department of Psychology

University of Roehampton

Whitelands College,

London

SW15 4JD

E: ray.norbury@roehampton.ac.uk

T: +44(0) 20 8932 5788

Abstract

Current evidence suggests that acute depression is associated with reduced total hippocampal volume and regional atrophy. Here, using structural magnetic resonance imaging, we assayed linear effects of chronotype on total hippocampal volume and morphology. Later chronotype was associated with localised atrophy in the subiculum region of the right hippocampus in the absence of changes in total volume. The hippocampus forms a key node in a network of brain regions implicated in emotional regulation and alterations in the structure of this region may underpin, in part, the increased vulnerability for depression in late chronotype individuals.

Keywords: Chronotype, Hippocampus, Emotion, Depression, Regulation, Morphology

Total word count: 4180 (including table and figure legends)

Abstract word count: 94

Introduction

Major Depressive Disorder (MDD) is one of the most prevalent and debilitating of all psychiatric disorders, affecting 4-17% of the general population (Wong & Licinio, 2001). Fewer than half of patients reach remission with standard pharmacotherapy and nearly 80% of patients suffer relapse. Often starting in adolescence (Kessler, Avenevoli, & Ries Merikangas, 2001), MDD follows a chronic course with a high risk of recurrence or persistence into adulthood and is associated with ongoing psychosocial difficulties and elevated risk for general medical illness (Nicholson, Kuper, & Hemingway, 2006). This malignant pattern of psychosocial dysfunction and disability suggests that the most effective strategies to reduce the health burden of MDD would be obtained through the targeting of 'at-risk' individuals.

A number of risk factors for depression have been identified including positive family history (Wells, Deykin, & Klerman, 1985), female gender (Piccinelli & Wilkinson, 2000), neuroticism (Vittengl, 2017) and childhood abuse (Widom, DuMont, & Czaja, 2007). Increasing evidence also identifies late chronotype as a vulnerability factor for depression (Fabbian et al., 2016). Across the general population late chronotype is associated with increased depressive symptomatology (Levandovski et al., 2011; Merikanto et al., 2013, 2015; Togo, Yoshizaki, & Komatsu, 2017), diagnosis of depression and use of antidepressant medication (Merikanto et al., 2013, 2015). Together, these data demonstrate a clear association between late chronotype and depression but the observational nature of these studies prevents examination of the underlying mechanisms that confer risk.

In the context of depression, one structure that has received significant critical inspection is the hippocampus (Rogers, Renoir, & Hannan, 2017). For example, the hippocampus is densely innervated by 5-HT (serotonin) projections from the dorsal raphe. Serotonergic signalling is strongly implicated in a number of psychiatric disorders

1
2
3 including depression and plays a key role in the cognitive and emotional processing that
4
5 underlies them. The hippocampus is highly connected to other subcortical regions involved in
6
7 emotional processing (e.g. amygdala) and also the hypothalamus (which forms part of the
8
9 stress-related hypothalamic-adrenal-pituitary axis (HPA axis)). Moreover, it has been
10
11 demonstrated that functionally relevant levels of neurogenesis occur in the adult human
12
13 hippocampus (Spalding et al., 2013) and adult hippocampal neurogenesis is implicated in
14
15 antidepressant response, stress response and cognitive function (O'Leary & Cryan, 2014).
16
17

18 Due to the implicated role of the hippocampus in medication response, stress and
19
20 cognition, a large number of Magnetic Resonance Imaging (MRI) studies have investigated
21
22 hippocampal volume in MDD. Although equivocal (Bora, Fornito, Pantelis, & Yücel, 2012),
23
24 a number of meta-analyses indicate reductions in hippocampal volume in patients *vs.*
25
26 controls (Arnone, McIntosh, Ebmeier, Munafò, & Anderson, 2012; MacQueen et al., 2003;
27
28 Schmaal et al., 2015). It is unclear, however, if these reductions are an outcome of the onset
29
30 of clinical symptoms (i.e. the neurotoxicity hypothesis (Sheline, 2011)) or predate the onset
31
32 of the disorder (i.e. the vulnerability hypothesis (Baaré et al., 2010; Durmusoglu et al.,
33
34 2018)). Support for the vulnerability hypothesis can be found across a number of studies that
35
36 have demonstrated reduced hippocampal volume and/or shape differences in euthymic
37
38 participants with positive family history for depression (Baaré et al., 2010; Chen, Hamilton,
39
40 & Gotlib, 2010; Durmusoglu et al., 2018) and early-life adversity (Dahmen et al., 2017) –
41
42 two well recognised risk factors for depression. To our best knowledge, however, no one has
43
44 yet investigated hippocampal volume or shape and related this to chronotype. Based on the
45
46 extant literature and consistent with the vulnerability hypothesis, we predicted that later
47
48 chronotype would be associated with lower total hippocampal (volumetric analysis) and
49
50 localised atrophy (vertex analysis).
51
52
53
54
55
56
57
58
59
60

Methods

Participants

The study was approved by the local ethics committee and written informed consent was obtained prior to any study procedures taking place. A total of 50 participants were recruited, all were in good physical health and free of concurrent medication. Exclusion criteria were current or previous depression, presence of major depression in a biological parent, diagnosed sleep disorder (each assessed by self-report) and contraindication for MR examination. Chronotype, sleep quality and depression/anxiety were determined using, respectively, the 5-item reduced Morningness-Eveningness Questionnaire (Adan & Almirall, 1991) the Pittsburgh Sleep Quality Index (Buysse, Reynolds, Monk, Berman, & Kupfer, 1989). and the Patient Health Questionnaire-4 (Löwe et al., 2010). Please see Table 1 for details.

TABLE 1 NEAR HERE PLEASE

Image data acquisition

All imaging data were acquired on a research dedicated 3T Magnetom TIM Trio (Siemens, Erlangen, Germany) fitted with a 32-channel head coil and located at the Combined Universities Brain Imaging Centre (CUBIC). For each participant, we collected a T₁-weighted whole-brain scan (magnetization-prepared rapid acquisition with gradient echo (MPRAGE), inversion time (TI) = 1100 ms, repetition time (TR) = 1830 ms, echo time (TE) = 3.03 ms, flip angle (FA) = 11°, field of view (FOV) = 256 × 256 × 160 mm³, voxel size = 1 × 1 × 1 mm³).

Data analysis pipeline

All image pre-processing and analyses were performed using FSL version 5.0.10 (FMRIB Software Library, <http://fsl.fmrib.ox.ac.uk/fsl/fslwiki/>). Non-brain removal was performed on each individual's T_1 -weighted image using a deformable model that evolves to fit the brain's surface by the application of a set of locally adaptive model forces. Subcortical brain measures (bilateral hippocampus) were delineated using FMRIB's Integration Registration and Segmentation Tool (FIRST). FIRST is a model-based segmentation tool that utilises shape and appearance models taken from an atlas of manually segmented images from the Centre for Morphometric Analysis. These manual segmentations are parameterised as surface meshes from which a point distribution is modelled. Using the observed intensities from each individual's T_1 -weighted image FIRST finds the most probable shape by searching through linear combinations of shape variation modes resulting in a hippocampus segmentation for each individual in native space. At each step, processed images were carefully inspected by one of the authors (CH) to ensure accuracy of results. Intracranial volume (ICV) was estimated as the inverse of the determinant of the rotation-translation matrix obtained after affine registration to a standard template multiplied by the template volume and used to correct for differences in head size.

In addition to volumetric analyses, vertex analyses were also conducted to investigate localised shape differences in the hippocampus. Based on the segmentation described above the boundary for each structure (left and right hippocampus) were reconstructed into a vertex-based surface and the vertex locations for each subject projected on the surfaces of the average shape transformed to Montreal Neurological Institute space. The projections were scalar values representing the signed, perpendicular distance from the average surface, where negative/positive values indicate, respectively, greater inversion/eversion from the average hippocampal shape. Linear effects of chronotype on scalar projection values were tested for

1
2
3 significance using non-parametric permutation tests (applying 5000 permutations) with sleep
4 quality, age, gender and mood/anxiety included as covariates in the regression model. Control
5 of the family-wise error rate was obtained using cluster-based thresholding with an initial
6 threshold of $Z > 3.1$ and a corrected spatial extent threshold of $p = .05$.

11 12 **Results**

13
14
15 Right and left hippocampal volumes as percentage of ICV ($M = .00265$, $SD = .0004$; M
16 $= .00262$, $SD = .0004$) were similar to previously published findings (Dean et al., 2016). There
17 were no laterality effects (dependent samples $t(49) = .693$, $p = .49$) or association with rMEQ
18 (right: $r(50) = .085$, $p = .56$; left $r(50) = .060$, $p = .69$). Vertex analyses showed a significant
19 relationship between vertex height and chronotype such that increased inversion (atrophy)
20 was associated with later chronotype in a mid-anterior region of the right hippocampus
21 (please see Figure 1). There was no relationship between localised shape change and
22 chronotype in left hippocampus.
23
24
25
26
27
28
29
30
31
32
33
34
35

36 **FIGURE 1 NEAR HERE PLEASE**
37
38
39
40
41
42
43
44
45
46
47
48
49
50
51
52
53
54
55
56
57

Discussion

The principle aims of the current work were to investigate hippocampal volume and shape in never-depressed healthy participants and relate this to chronotype. Consistent with our original hypotheses later chronotype was associated with localised atrophy in right hippocampus independent of age, gender sleep quality and mood. However, contrary to our predictions, there was no relationship between total hippocampal volume and chronotype.

Interpretation of the current findings should take into consideration a number of limitations. Current, previous and family history of depression was determined using self-report. Future studies may benefit from reference to medical history or structured clinical interview to assess exclusion criteria. We also did not measure or exclude participants with high neuroticism which is another population proven to be at-risk of depression (Kendler, Gatz, Gardner, & Pedersen, 2006). However, previous work suggests that, in the age range included in this study, neuroticism does not impact on hippocampal volume (Chan et al., 2016). Of note, repeated clinical observations have reported an association between acute depression and increased availability of cortisol. The hippocampus is enriched with glucocorticoid receptors and elevated cortisol secretion is associated with reduced neurogenesis and neurotoxicity (Cowen, 2010). We did not measure cortisol levels in our participants so cannot exclude a potential impact of this hormone on our findings. Arguing against this however, a number of studies have reported increased cortisol waking response and higher overall concentrations of cortisol in early vs. late chronotypes (Kudielka, Federenko, Hellhammer, & Wüst, 2006; Maierova et al., 2016). In respect to risk for depression, an elevated waking cortisol response has been reported in some groups at risk for depression (e.g. positive family history, Mannie, Harmer, & Cowen, 2007) but not others (e.g. high neuroticism, Chan, Harmer, Goodwin, & Norbury, 2008). As we excluded participants with a positive family history of depression and current, although limited, evidence suggests

1
2
3 early chronotype is associated with higher levels of cortisol we would argue that fluctuation
4
5 in cortisol levels is an unlikely explanation for our findings.
6
7

8 Current evidence indicates the acute depression is associated with modest reductions
9
10 in total hippocampal volume (Arnone et al., 2012; MacQueen et al., 2003; Schmaal et al.,
11
12 2015). The temporal characteristics of these changes, however, are not fully understood. The
13
14 neurotoxicity hypothesis posits that volumetric changes are a neurodegenerative response to
15
16 chronic stress (Sheline, 2011). The biological abnormalities underlying this volume reduction
17
18 are likely multifactorial, including prolonged exposure to glucocorticoids and stress-induced
19
20 reductions in neurotrophic factors and neurogenesis. In support of the neurotoxicity
21
22 hypothesis a number of studies have reported that cumulative duration of lifetime depression,
23
24 number of depressive episodes and an earlier age of depression onset are associated with
25
26 hippocampal volume loss (MacQueen et al., 2003; Sheline, Sanghavi, Mintun, & Gado,
27
28 1999).
29
30

31
32 Hippocampal volume reduction has also been reported in groups at increased risk for
33
34 depression. For example, Chen and colleagues (2010) observed reduced hippocampal volume
35
36 in adolescent daughters of mothers with recurrent episodes of depression that occurred during
37
38 the daughter's lifetime (at-risk group) as compared with age-matched daughters of mothers
39
40 with no history of depression. Similarly, Amico *et al.*, (2011) compared hippocampal volume
41
42 in currently depressed, at-risk (family history of depression) and control adults (Amico et al.,
43
44 2011). The high-risk group had smaller right hippocampal volume than the depressed and
45
46 low-risk group (high-risk < depressed < low-risk) a finding that may be consistent with
47
48 plasticity effects of antidepressant treatment (O'Leary & Cryan, 2014). Of note, Chan and
49
50 colleagues (Chan et al., 2016) compared hippocampal volume in older adult highly neurotic
51
52 individuals (another established risk factor depression), recovered depressed patients and age-
53
54 matched low neuroticism controls. They reported larger bilateral hippocampal volumes in the
55
56
57

58
59
60
9

1
2
3 at-risk group as compared to the recovered depressed and low neuroticism groups. The
4 authors concluded that the larger hippocampal volume in this older adult (mean age 40 years)
5 at-risk group may reflect a resilience factor. In a complimentary study the same authors
6 compared high and low neurotic younger adults (mean age 20 years) and found no
7 differences in hippocampal volume (Chan et al., 2016).
8
9
10
11
12

13
14 We did not observe an association between later chronotypes and global hippocampal
15 volume. We did, however, observe more subtle localised atrophy related to chronotype in a
16 mid-anterior region of the right hippocampus. Indeed, a number of studies in depressed
17 patients have revealed localised shape changes in the absence of global reductions in volume.
18 For example, Isikli *et al.*, (2013) reported bilateral hippocampal shape alterations in currently
19 depressed patients as compared to a matched group of healthy controls in a number of regions
20 including an area on the inferior surface of the right hippocampus (subiculum) similar to that
21 reported here. Similarly, Posener and colleagues, using high dimensional mapping of the
22 hippocampus, reported inward deformations in the right subiculum of currently depressed
23 patients (Posener et al., 2003). Bearden *et al.*, (2009) observed that more severe symptom
24 severity in unmedicated currently depressed patients was associated with greater left
25 hippocampal atrophy in Cornu Ammonis (CA) 1 and subiculum (Bearden et al., 2009). More
26 recently, Watanabe and colleagues (Watanabe et al., 2017) reported significant inward
27 deformations in bilateral CA 1 and subiculum in first episode drug-naïve depressed patients
28 as compared to a demographically similar healthy control group. In addition, within the
29 patient group there was a linear relationship between the degree of deformation and serum
30 cortisol levels.
31
32
33
34
35
36
37
38
39
40
41
42
43
44
45
46
47
48
49
50

51 The above findings suggest that localised hippocampal atrophy, particularly in CA1
52 and subiculum, is present during the acutely depressed state. Data on whether these
53 morphological changes are present prior to the onset of disease (vulnerability factor) are more
54
55
56
57

1
2
3 limited. In support of the vulnerability hypothesis Durmusoglu and colleagues reported
4
5 contractions in the right CA1/subiculum border in young adult women at increased risk for
6
7 depression by virtue of a mother with a diagnosis of recurrent depression (Durmusoglu et al.,
8
9 2018). These data are similar to our own findings and provide further evidence that in some
10
11 vulnerable individuals localised hippocampal atrophy precedes the onset of depression and,
12
13 therefore, may be implicated in the aetiology of the disorder.
14
15

16
17 The trajectory and functional significance of the localised atrophy reported here are
18
19 unknown. It is possible that the extent and degree of atrophy increases over time with the
20
21 accumulation of atrophy ultimately leading to clinical depression. In addition, the
22
23 hippocampus is critically involved with emotion regulation (Amico et al., 2011) and projects
24
25 to a number of limbic regions including the amygdala. Here we did not measure emotion
26
27 regulation directly but previous work suggests that later chronotype is associated with
28
29 maladaptive emotion regulation strategies (reduced cognitive reappraisal and increased
30
31 emotion suppression, Watts & Norbury, 2017) and greater rumination and cognitive
32
33 reactivity (Antypa et al., 2017). Moreover, late chronotype has been associated with reduced
34
35 microstructural integrity in the white matter underlying the left anterior cingulate cortex
36
37 (ACC; Rosenberg, Maximov, Reske, Grinberg, & Shah, 2014) and an elevated amygdala
38
39 response to negative emotional stimuli and reduced amygdala-ACC functional connectivity
40
41 (Horne & Norbury, 2018). Together, these regions form key nodes in a network of brain areas
42
43 implicated in emotional regulation (Hiser & Koenigs, 2017) and alterations in the structure
44
45 and function of these regions may underpin, in part, the increased vulnerability for depression
46
47 in late chronotype individuals. Future, well-powered, prospective studies are required to
48
49 investigate and better understand the importance of the structural and functional changes
50
51 reported here and elsewhere (Rosenberg et al., 2014) for the development of depression in
52
53 late chronotype individuals.
54
55
56
57

References

- 1
2
3
4
5
6 Adan, A., & Almirall, H. (1991). Horne & Östberg morningness-eveningness questionnaire: A
7
8 reduced scale. *Personality and Individual Differences*, 12(3), 241–253.
9
10 [https://doi.org/10.1016/0191-8869\(91\)90110-W](https://doi.org/10.1016/0191-8869(91)90110-W)
- 11
12 Amico, F., Meisenzahl, E., Koutsouleris, N., Reiser, M., Möller, H.-J., & Frodl, T. (2011). Structural
13
14 MRI correlates for vulnerability and resilience to major depressive disorder. *Journal of*
15
16 *Psychiatry & Neuroscience: JPN*, 36(1), 15–22. <https://doi.org/10.1503/jpn.090186>
- 17
18 Antypa, N., Verkuil, B., Molendijk, M., Schoevers, R., Penninx, B. W. J. H., & Van Der Does, W.
19
20 (2017). Associations between chronotypes and psychological vulnerability factors of
21
22 depression. *Chronobiology International*, 1–11.
23
24 <https://doi.org/10.1080/07420528.2017.1345932>
- 25
26 Arnone, D., McIntosh, A. M., Ebmeier, K. P., Munafò, M. R., & Anderson, I. M. (2012). Magnetic
27
28 resonance imaging studies in unipolar depression: Systematic review and meta-regression
29
30 analyses. *European Neuropsychopharmacology*, 22(1), 1–16.
31
32 <https://doi.org/10.1016/j.euroneuro.2011.05.003>
- 33
34 Baaré, W. F. C., Vinberg, M., Knudsen, G. M., Paulson, O. B., Langkilde, A. R., Jernigan, T. L., &
35
36 Kessing, L. V. (2010). Hippocampal volume changes in healthy subjects at risk of unipolar
37
38 depression. *Journal of Psychiatric Research*, 44(10), 655–662.
39
40 <https://doi.org/10.1016/j.jpsychires.2009.12.009>
- 41
42 Bearden, C. E., Thompson, P. M., Avedissian, C., Klunder, A. D., Nicoletti, M., Dierschke, N., ...
43
44 Soares, J. C. (2009). Altered hippocampal morphology in unmedicated patients with major
45
46 depressive illness. *ASN NEURO*, 1(4). <https://doi.org/10.1042/AN20090026>
- 47
48 Bora, E., Fornito, A., Pantelis, C., & Yücel, M. (2012). Gray matter abnormalities in Major
49
50 Depressive Disorder: a meta-analysis of voxel based morphometry studies. *Journal of*
51
52 *Affective Disorders*, 138(1–2), 9–18. <https://doi.org/10.1016/j.jad.2011.03.049>
- 53
54
55
56
57

- 1
2
3 Buysse, D. J., Reynolds, C. F., 3rd, Monk, T. H., Berman, S. R., & Kupfer, D. J. (1989). The
4
5 Pittsburgh Sleep Quality Index: a new instrument for psychiatric practice and research.
6
7 *Psychiatry Research*, 28(2), 193–213.
- 8
9 Chan, S., Harmer, C. J., Goodwin, G. M., & Norbury, R. (2008). Risk for depression is associated
10
11 with neural biases in emotional categorisation. *Neuropsychologia*, 46(12), 2896–2903.
12
13 <https://doi.org/10.1016/j.neuropsychologia.2008.05.030>
- 14
15 Chan, S., Harmer, C. J., Norbury, R., O’Sullivan, U., Goodwin, G. M., & Portella, M. J. (2016).
16
17 Hippocampal volume in vulnerability and resilience to depression. *Journal of Affective*
18
19 *Disorders*, 189, 199–202. <https://doi.org/10.1016/j.jad.2015.09.021>
- 20
21 Chen, M. C., Hamilton, J. P., & Gotlib, I. H. (2010). Decreased Hippocampal Volume in Healthy
22
23 Girls at Risk of Depression. *Archives of General Psychiatry*, 67(3), 270.
24
25 <https://doi.org/10.1001/archgenpsychiatry.2009.202>
- 26
27 Cowen, P. J. (2010). Not fade away: the HPA axis and depression. *Psychological Medicine*, 40(1), 1–
28
29 4. <https://doi.org/10.1017/S0033291709005558>
- 30
31 Dahmen, B., Puetz, V. B., Scharke, W., Polier, G. G. von, Herpertz-Dahlmann, B., & Konrad, K.
32
33 (2017). Effects of Early-Life Adversity on Hippocampal Structures and Associated HPA Axis
34
35 Functions. *Developmental Neuroscience*, (0). <https://doi.org/10.1159/000484238>
- 36
37 Dean, D. J., Orr, J. M., Bernard, J. A., Gupta, T., Pelletier-Baldelli, A., Carol, E. E., & Mittal, V. A.
38
39 (2016). Hippocampal Shape Abnormalities Predict Symptom Progression in Neuroleptic-Free
40
41 Youth at Ultrahigh Risk for Psychosis. *Schizophrenia Bulletin*, 42(1), 161–169.
42
43 <https://doi.org/10.1093/schbul/sbv086>
- 44
45 Durmusoglu, E., Ugurlu, O., Akan, S., Simsek, F., Kizilates, G., Kitis, O., ... Gonul, A. S. (2018).
46
47 Hippocampal shape alterations in healthy young women with familial risk for unipolar
48
49 depression. *Comprehensive Psychiatry*, 82, 7–13.
50
51 <https://doi.org/10.1016/j.comppsy.2018.01.004>
- 52
53 Fabbian, F., Zucchi, B., Giorgi, A. D., Tiseo, R., Boari, B., Salmi, R., ... Manfredini, R. (2016).
54
55 Chronotype, gender and general health. *Chronobiology International*, 1–20.
56
57 <https://doi.org/10.1080/07420528.2016.1176927>

- 1
2
3 Hiser, J., & Koenigs, M. (2017). The Multifaceted Role of the Ventromedial Prefrontal Cortex in
4 Emotion, Decision Making, Social Cognition, and Psychopathology. *Biological Psychiatry*.
5 <https://doi.org/10.1016/j.biopsych.2017.10.030>
6
7
8
9 Horne, C. M., & Norbury, R. (2018). Late chronotype is associated with enhanced amygdala
10 reactivity and reduced fronto-limbic functional connectivity to fearful versus happy facial
11 expressions. *NeuroImage*, *171*, 355–363. <https://doi.org/10.1016/j.neuroimage.2018.01.025>
12
13
14 Kendler, K. S., Gatz, M., Gardner, C. O., & Pedersen, N. L. (2006). Personality and major depression:
15 a Swedish longitudinal, population-based twin study. *Archives of General Psychiatry*, *63*(10),
16 1113–1120. <https://doi.org/10.1001/archpsyc.63.10.1113>
17
18
19
20 Kessler, R. C., Avenevoli, S., & Ries Merikangas, K. (2001). Mood disorders in children and
21 adolescents: an epidemiologic perspective. *Biological Psychiatry*, *49*(12), 1002–1014.
22
23
24 Kudielka, B. M., Federenko, I. S., Hellhammer, D. H., & Wüst, S. (2006). Morningness and
25 eveningness: the free cortisol rise after awakening in ‘early birds’ and ‘night owls’. *Biological*
26
27
28
29
30
31 Levandovski, R., Dantas, G., Fernandes, L. C., Caumo, W., Torres, I., Roenneberg, T., ... Allebrandt,
32 K. V. (2011). Depression Scores Associate With Chronotype and Social Jetlag in a Rural
33 Population. *Chronobiology International*, *28*(9), 771–778.
34
35
36
37
38
39 Löwe, B., Wahl, I., Rose, M., Spitzer, C., Glaesmer, H., Wingenfeld, K., ... Brähler, E. (2010). A 4-
40 item measure of depression and anxiety: validation and standardization of the Patient Health
41 Questionnaire-4 (PHQ-4) in the general population. *Journal of Affective Disorders*, *122*(1–2),
42 86–95. <https://doi.org/10.1016/j.jad.2009.06.019>
43
44
45
46 MacQueen, G. M., Campbell, S., McEwen, B. S., Macdonald, K., Amano, S., Joffe, R. T., ... Young,
47 L. T. (2003). Course of illness, hippocampal function, and hippocampal volume in major
48 depression. *Proceedings of the National Academy of Sciences*, *100*(3), 1387–1392.
49
50
51
52
53
54
55
56
57
58
59
60

- 1
2
3 Maierova, L., Borisuit, A., Scartezzini, J.-L., Jaeggi, S. M., Schmidt, C., & Münch, M. (2016).
4
5 Diurnal variations of hormonal secretion, alertness and cognition in extreme chronotypes
6
7 under different lighting conditions. *Scientific Reports*, 6. <https://doi.org/10.1038/srep33591>
8
9 Mannie, Z. N., Harmer, C. J., & Cowen, P. J. (2007). Increased waking salivary cortisol levels in
10
11 young people at familial risk of depression. *The American Journal of Psychiatry*, 164(4),
12
13 617–621. <https://doi.org/10.1176/appi.ajp.164.4.617>
14
15 Merikanto, I., Kronholm, E., Peltonen, M., Laatikainen, T., Vartiainen, E., & Partonen, T. (2015).
16
17 Circadian preference links to depression in general adult population. *Journal of Affective*
18
19 *Disorders*, 188, 143–148. <https://doi.org/10.1016/j.jad.2015.08.061>
20
21 Merikanto, I., Lahti, T., Kronholm, E., Peltonen, M., Laatikainen, T., Vartiainen, E., ... Partonen, T.
22
23 (2013). Evening types are prone to depression. *Chronobiology International*, 30(5), 719–725.
24
25 <https://doi.org/10.3109/07420528.2013.784770>
26
27 Nicholson, A., Kuper, H., & Hemingway, H. (2006). Depression as an aetiologic and prognostic
28
29 factor in coronary heart disease: a meta-analysis of 6362 events among 146 538 participants
30
31 in 54 observational studies. *European Heart Journal*, 27(23), 2763–2774.
32
33 <https://doi.org/10.1093/eurheartj/ehl338>
34
35 O’Leary, O. F., & Cryan, J. F. (2014). A ventral view on antidepressant action: roles for adult
36
37 hippocampal neurogenesis along the dorsoventral axis. *Trends in Pharmacological Sciences*,
38
39 35(12), 675–687. <https://doi.org/10.1016/j.tips.2014.09.011>
40
41 Piccinelli, M., & Wilkinson, G. (2000). Gender differences in depression: Critical review. *The British*
42
43 *Journal of Psychiatry*, 177(6), 486–492. <https://doi.org/10.1192/bjp.177.6.486>
44
45 Posener, J. A., Wang, L., Price, J. L., Gado, M. H., Province, M. A., Miller, M. I., ... Csernansky, J.
46
47 G. (2003). High-dimensional mapping of the hippocampus in depression. *The American*
48
49 *Journal of Psychiatry*, 160(1), 83–89. <https://doi.org/10.1176/appi.ajp.160.1.83>
50
51 Rogers, J., Renoir, T., & Hannan, A. J. (2017). Gene-environment interactions informing therapeutic
52
53 approaches to cognitive and affective disorders. *Neuropharmacology*.
54
55 <https://doi.org/10.1016/j.neuropharm.2017.12.038>
56
57
58

- 1
2
3 Rosenberg, J., Maximov, I. I., Reske, M., Grinberg, F., & Shah, N. J. (2014). 'Early to bed, early to
4 rise': diffusion tensor imaging identifies chronotype-specificity. *NeuroImage*, *84*, 428–434.
5
6 <https://doi.org/10.1016/j.neuroimage.2013.07.086>
7
8
9 Schmaal, L., Veltman, D. J., van Erp, T. G. M., Sämann, P. G., Frodl, T., Jahanshad, N., ... Hibar, D.
10 P. (2015). Subcortical brain alterations in major depressive disorder: findings from the
11 ENIGMA Major Depressive Disorder working group. *Molecular Psychiatry*.
12
13 <https://doi.org/10.1038/mp.2015.69>
14
15
16 Sheline, Y. I. (2011). Depression and the Hippocampus: Cause or Effect? *Biological Psychiatry*,
17
18 *70*(4), 308–309. <https://doi.org/10.1016/j.biopsych.2011.06.006>
19
20
21 Sheline, Y. I., Sanghavi, M., Mintun, M. A., & Gado, M. H. (1999). Depression duration but not age
22 predicts hippocampal volume loss in medically healthy women with recurrent major
23 depression. *The Journal of Neuroscience: The Official Journal of the Society for*
24
25 *Neuroscience*, *19*(12), 5034–5043.
26
27
28 Spalding, K. L., Bergmann, O., Alkass, K., Bernard, S., Salehpour, M., Huttner, H. B., ... Frisén, J.
29
30 (2013). Dynamics of Hippocampal Neurogenesis in Adult Humans. *Cell*, *153*(6), 1219–1227.
31
32 <https://doi.org/10.1016/j.cell.2013.05.002>
33
34
35 Togo, F., Yoshizaki, T., & Komatsu, T. (2017). Association between depressive symptoms and
36 morningness-eveningness, sleep duration and rotating shift work in Japanese nurses.
37
38 *Chronobiology International*, 1–11. <https://doi.org/10.1080/07420528.2016.1273942>
39
40
41 Vittengl, J. R. (2017). Who pays the price for high neuroticism? Moderators of longitudinal risks for
42 depression and anxiety. *Psychological Medicine*, 1–12.
43
44 <https://doi.org/10.1017/S0033291717000253>
45
46
47 Watanabe, R., Kakeda, S., Watanabe, K., Liu, X., Katsuki, A., Umeno-Nakano, W., ... Korogi, Y.
48
49 (2017). Relationship between the hippocampal shape abnormality and serum cortisol levels in
50 first-episode and drug-naïve major depressive disorder patients. *Depression and Anxiety*,
51
52 *34*(5), 401–409. <https://doi.org/10.1002/da.22604>
53
54
55 Watts, A. L., & Norbury, R. (2017). Reduced Effective Emotion Regulation in Night Owls. *Journal of*
56
57 *Biological Rhythms*, *32*(4), 369–375. <https://doi.org/10.1177/0748730417709111>
58

- 1
2
3 Wells, V. E., Deykin, E. Y., & Klerman, G. L. (1985). Risk factors for depression in adolescence.
4
5 *Psychiatric Developments*, 3(1), 83–108.
6
7 Widom, C. S., DuMont, K., & Czaja, S. J. (2007). A prospective investigation of major depressive
8
9 disorder and comorbidity in abused and neglected children grown up. *Archives of General*
10
11 *Psychiatry*, 64(1), 49–56. <https://doi.org/10.1001/archpsyc.64.1.49>
12
13 Wong, M.-L., & Licinio, J. (2001). Research and treatment approaches to depression. *Nature Reviews*
14
15 *Neuroscience*, 2(5), 343–351. <https://doi.org/10.1038/35072566>
16
17
18
19
20
21
22
23
24
25
26
27
28
29
30
31
32
33
34
35
36
37

38 **Acknowledgements**

39
40 We would like to thank Mr Ari Lingeswaran, Royal Holloway University for his technical
41
42 assistance and all of our volunteers who participated in this work.
43
44
45

46 **Competing interests**

47
48
49 The authors report no conflicts of interest.
50
51
52

53 **Funding**

54
55 This work was supported by the University of Roehampton.
56
57

1
2
3
4
5
6
7
8
9
10
11
12
13
14
15
16
17
18
19
20
21
22
23
24
25
26
27
28
29
30
31
32
33
34
35
36
37
38
39
40
41
42
43
44
45
46
47
48
49
50
51
52
53
54
55
56
57
58
59
60

For Peer Review Only

Variable	<i>M</i> (<i>SD</i>)	Range (this sample)	Range (original scale)
Age	21.24 (3.77)	18-37	-
Gender	Female 38 (76%); Male 12 (24%)	-	-
Sleep quality	7.30 (3.42)	1 - 15	0 – 21
Chronotype	12.62 (3.62)	6 - 20	4 – 25
PHQ-4 (Anxiety)	0.91 (1.09)	0 - 5	0 – 6
PHQ-4 (Mood)	1.61 (1.58)	0 - 6	0 -6

Table 1. Basic demographics, sleep quality (PSQI), chronotype (rMEQ), mood and anxiety (PHQ-4). Please see Methods for questionnaire details. Values show mean (SD). Also included are the questionnaire range (minimum-maximum) for the study sample and original scale.

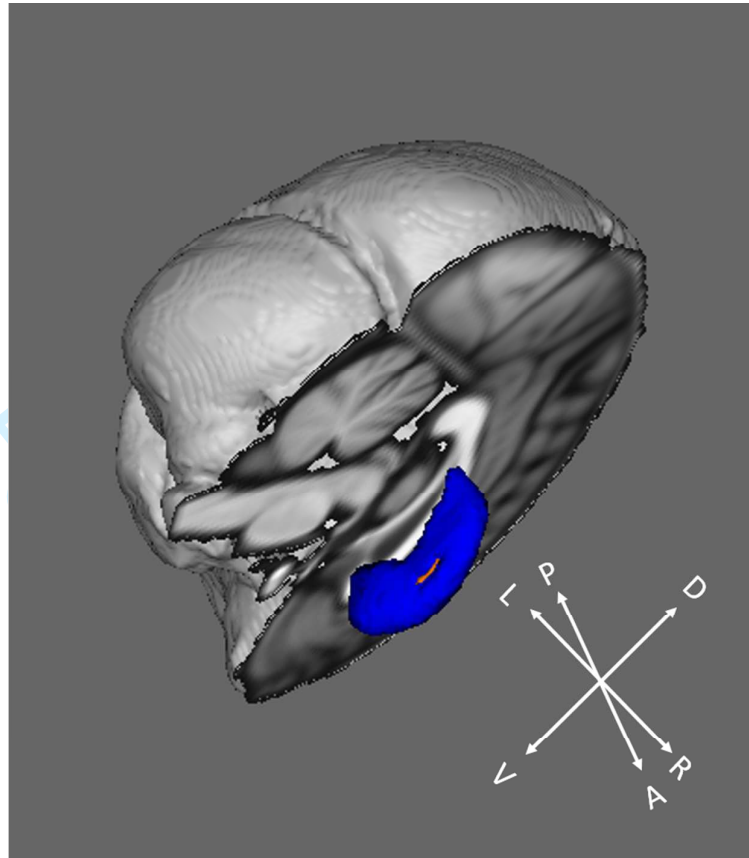


Figure 1. Vertex analysis shows focal atrophy (shown in red) associated with later chronotype on the ventral aspect of the mid-anterior right hippocampus. V,D,L,R,P,A; ventral, dorsal, left, right, posterior, anterior.