

1
2
3
4 **A copula-based fuzzy interval-random programming approach for planning water-energy**
5 **nexus system under uncertainty**
6

7
8 L. Yu^{1*}, Y. Xiao², S. Jiang^{3*}, Y.P. Li⁴, Y.R. Fan⁵, G.H. Huang⁶, J. Lv⁷, Q.T. Zuo⁸, F.Q. Wang⁹
9

10
11 ^{1*} (Corresponding Author) School of Water Conservancy Engineering, Zhengzhou University, Zhengzhou
12 450001, China; Zhengzhou Key Laboratory of Water Resource and Environment, Zhengzhou, 450001,
13 China; Henan Key Laboratory of Groundwater Pollution Prevention and Rehabilitation, Zhengzhou,
14 450001, China; E-mail: yulei2018@zzu.edu.cn
15

16
17 ² School of Water Conservancy Engineering, Zhengzhou University, Zhengzhou 450001, China; E-mail:
18 xiaoyaocs@163.com
19

20
21 ^{3*} (Corresponding Author) Department of water resources, China Institute of Water Resources and
22 Hydropower Research, Beijing 100038, China; E-mail: jiangs@iwhr.com
23

24
25 ⁴ School of Environment, Beijing Normal University, Beijing 100875, China; E-mail:
26 yongping.li@iseis.org
27

28
29 ⁵ Department of Civil and Environmental Engineering, Brunel University London, Uxbridge, UB8 3PH,
30 United Kingdom; E-mail: yurui.fan@gmail.com
31

32
33 ⁶ Institute for Energy, Environment and Sustainable Communities, University of Regina, Regina, Sask.
34 S4S 7H9, Canada; E-mail: gordon.huang@uregina.ca
35

36
37 ⁷ Sino-Canada Energy and Environmental Research Center, North China Electric Power University,
38 Beijing 102206, China; E-mail: 291697439@qq.com
39

40
41 ⁸ School of Water Conservancy Engineering, Zhengzhou University, Zhengzhou 450001, China; E-mail:
42 zuoqt@zzu.edu.cn
43

44
45
46
47
48
49
50
51
52
53
54
55
56
57
58
59
60
61
62
63
64
65
⁹ Department of Water Conservancy Engineering, North China University of Water Resources and Electric
Power, Zhengzhou 450046, China; E-mail: wangfuqiang@ncwu.edu.cn

1
2
3
4
5
6 **Abstract**
7
8
9

10 Water and energy are closely linked and restrict each other, which has become major restraints to
11 urban development associated with constricted water availability, increased electricity demand
12 and limited environmental capacity. In this study, a copula-based fuzzy interval-random
13 programming method is proposed through integration of copula-based random programming,
14 interval-parameter programming and fuzzy possibilistic programming. It can both handle random,
15 interval and fuzzy information and reflect system joint-risk existed in the water-energy nexus
16 system of Henan Province, China. A class of copulas associated with different water
17 resource-availability and electricity-consumption scenarios as well as various uncertainties are
18 examined. Results disclose that: a) uncertainties and scenarios employed to water resources,
19 electricity demand and other module parameters can generate prominent impacts on the future
20 water-energy nexus system; b) the percentage of electricity by coal-fired power can decrease by
21 [1.8, 2.6] % under low water-availability scenario compared to high water-availability scenario.
22 Findings can provide optimal electricity-supply schemes under the conflicts among economic
23 objective, water resources shortage and electricity demand, as well as environmental
24 requirement.
25
26
27
28
29
30
31
32
33
34
35
36
37
38
39
40

41 **Keywords:** copula, interaction, joint risk, uncertainty, water-energy nexus system
42
43
44
45
46
47
48
49
50
51
52
53
54
55
56
57
58
59
60
61
62
63
64
65

1. Introduction

1.1 Importance

Water and energy, the world's two most critical resources, are gaining international attention from both the general public and the academia [1]. Water and energy are closely linked. The supply, transportation and treatment of water resources need to consume a large amount of energy, while the whole process of energy production from mineral exploitation to electricity generation needs to be completed under the action of water cleaning, cooling and conduction [2]. Water and energy are interdependent and restrict each other, which has become major restraints to urban development [3]. China, a largest developing country around the world, occupies 21% of the world's energy consumption and holds 6% of the global fresh water sources [4]. The contradictions among water, energy, air pollution and carbon dioxide (CO₂) emissions are increasingly deteriorative. Moreover, the primary energy bases in China are among the most water-stressed area of the country [5]. Such mismatched geographical space further aggravates the challenge between water shortage and energy security. Although several polices such as "3 Red lines" and "Water allocation plan for coal bases" were enacted to reduce water utilization, improve water efficiency and reduce sewage water discharges in the coal sector, particularly for further managing future coal-fired power plants in water-scarce regions [6]. However, in real-world water-energy nexus (WEN) problems, water and energy resources are associated with social, economic, managerial and environmental limitations [7]. Above of which force researchers to propose effective strategies toward the energy system's water utilization in a mutually-beneficial manner between economic development and environmental mitigation.

1.2 Literature review

Previously, numerous studies were focused on quantitatively analyzing WEN system. For example, Al-Ansari et al. [8] adopted a life cycle assessment (LCA) approach to assess the nexus of water-energy-food (WEF) in food production systems. Wang and Chen [9] developed a multi-regional network model for planning the WEN of Beijing-Tianjin-Hebei urban agglomeration. Chhipi-Shrestha et al. [10] used a system dynamic modelling (SDM) to recognize

1
2
3
4 key factors for the urban water system in Penticton. Khan et al. [11] formulated an integrated
5 agent-based modelling ABM-SWAT (soil and water-assessment tool) model for analyzing the
6 water-energy-food-environment (WEFE) nexus system management in transboundary river
7 basins. Summarily, the above studies are mainly focused on dealing with WEN problems when
8 their system components were deterministic. However, some coefficients are not obtained as
9 deterministic due to the inaccuracy of empirical observations and estimations [12]. Thus, it is of
10 indispensability to exploit more robust optimization techniques for planning WEN corresponding
11 to the associated complexities and uncertainties [13].
12
13
14
15
16
17
18
19
20

21 Recently, lots of efforts were made in WEN for dealing with uncertainties such as integrated
22 energy system modelling (IESM), multi-objective programming (MOP), two-level programming
23 (TLP), system dynamics approach (SDA). For example, Zhang and Vesselinov [14] proposed a
24 bi-level model for handling the tradeoffs in WEN problems. Bieber et al. [15] developed an
25 integrated modelling for the WEF nexus system, where ABM was used for simulating varied
26 resource demands and scenario-based approaches were used for presenting different policies. Li
27 et al. [16] used an incorporated multi-objective programming method to planning the agricultural
28 WEF, where contradictions among water, energy, food and land are handled. Feng et al. [17]
29 used the system dynamics approach for modeling the nexus across water, power and
30 environment in Hehuang Region, China. In general, the above studies mainly focused on
31 handling WEN tradeoffs through using the modeled scenarios among different policies or varied
32 views of decision makers, and overall satisfaction of the two-level decision makers [18].
33 However, few of them are specialized in analyzing the intricate and complex interactions of the
34 WEN system. For a real-world WEN system, it includes two subsystems (water subsystem and
35 energy subsystem), and each contains multiple layers and components. Every component in each
36 subsystem can result in changed influence on the other subsystem and pose joint shortage risk
37 between water and energy [19]. Copula approach has its effectiveness in reflecting
38 joint-violation risk through modeling multivariate joint distributions [20].
39
40
41
42
43
44
45
46
47
48
49
50
51
52
53
54
55

56 *1.3 Contribution*

57
58
59
60
61
62
63
64
65

1
2
3
4 This study aims to propose a copula-based fuzzy interval-random programming (CFIP) approach
5 for multi-uncertainty reflection by combining copula-based random programming (CRP),
6 interval-parameter programming (IPP) and fuzzy possibilistic programming (FPP). Compared to
7 the deterministic quantitatively analysis methods in Al-Ansari et al. [8], Wang and Chen [9],
8 Chhipi-Shrestha et al. [10] and Khan et al. [11], CFIP can handle complexities and uncertainties
9 existing in WEN management problems. In comparison with the inexact optimization methods in
10 Zhang and Vesselinov [14], Bieber et al. [15], Li et al. [16], and Feng et al. [17], CFIP can not
11 only deal with uncertainties presented by the interval and fuzzy information but also tackle the
12 random water resources availability and electricity demand as well as the correlative system
13 joint-risk. Summarily, CFIP combines the superiority of CRP, IPP and FPP into one framework,
14 which can efficaciously: (a) deal with the uncertainties expressed as random variables, interval
15 values and fuzzy sets as well as their combinations (i.e. interval-fuzzy modulus and
16 interval-random variables); (b) reveal the water-shortage risk, electricity-shortage risk as their
17 correlated joint-shortage risk. Then, a CFIP-WEN model is developed and then applied to the
18 WEN system of Henan Province, China. In the CFIP-WEN model, four classes of copulas (i.e.
19 Clayton, Frank, Gumbel and Student's t copulas), five scenarios with different groups of water
20 resources availability and electricity consumption, four λ levels corresponding to decision
21 makers' different necessity degrees of the system cost are considered. Results will help decision
22 makers: (a) identify the desired electricity-supply patterns under the conflicts among economic
23 objective, water resources shortage and electricity demand as well as environmental requirement;
24 (b) analyze interactions between water resources availability and electricity consumption, and
25 disclose their joint risk on WEN system associated with different scenarios.

26 27 28 29 30 31 32 33 34 35 36 37 38 39 40 41 42 43 44 45 46 **2. Methodology**

47
48
49
50 CRP has advantages of capturing the dependence of bivariate or multivariate random variables
51 and binding disparate univariate marginal distributions together through constructing their joint
52 distribution based on a copula function [21]. According to Charnes and Cooper [22], Chen et al.
53 [23], Simic and Dabic-Ostojic [24], a generic CRP model can be depicted as

$$54 \quad \text{Min } E = \sum_{j=1}^n c_j x_j \quad (1a)$$

subject to:

$$\sum_{j=1}^n a_{ij} x_j \leq b_i^{p_i}, i = 1, 2, \dots, k \quad (1b)$$

$$C(1 - p_1, 1 - p_2, \dots, 1 - p_k) = 1 - p \quad (1c)$$

$$\sum_{j=1}^n a_{ij} x_j \leq b_i, i = k + 1, k + 2, \dots, m \quad (1d)$$

$$x_j \geq 0, j = 1, 2, \dots, n \quad (1e)$$

where x_j are decision variables; a_{ij} and b_i are coefficients; $b_i^{p_i}$ are random variables; C is the determinate copula; p_i ($i = 1, 2, \dots, k$) are constraint-violation levels; $b_i^{p_i} = F_i^{-1}(p_i)$.

For a real-world WEN system, some economic parameters are affected by the socio-economic, political, legislation and technical factors, which can hard to be achieved as stochastic variables but can be presented as interval values through using the IPP technique [25]. Some imprecise data can rarely be achieved as randomness and interval but can be presented by fuzzy sets [26]. Through introducing IPP and FPP into CRP, a CFIP model can be formulated as:

$$\text{Min } \tilde{E}^{\pm} = \sum_{j=1}^n \tilde{c}_j^{\pm} x_j^{\pm} \quad (2a)$$

subject to:

$$\sum_{j=1}^n a_{ij}^{\pm} x_j^{\pm} \leq b_i^{(p_i)\pm}, i = 1, 2, \dots, k \quad (2b)$$

$$C(1 - p_1, 1 - p_2, \dots, 1 - p_k) = 1 - p \quad (2c)$$

$$\sum_{j=1}^n a_{ij}^{\pm} x_j^{\pm} \leq b_i^{\pm}, i = k + 1, k + 2, \dots, m \quad (2d)$$

$$x_j^{\pm} \geq 0, j = 1, 2, \dots, n \quad (2e)$$

where $a_{ij}^{\pm} \in \{R^{\pm}\}^{m \times n}$, $b_i^{\pm} \in \{R^{\pm}\}^{m \times 1}$, $\tilde{c}_j^{\pm} \in \{R^{\pm}\}^{1 \times n}$, $x_j^{\pm} \in \{R^{\pm}\}^{n \times 1}$; R^{\pm} mean interval numbers; \tilde{c}_j^{\pm} represent fuzzy-boundary intervals. Based on Inuiguchi and Ramik [27], Model (2) can be converted into:

$$\text{Min } E^{\pm} = \left(\sum_{j=1}^k c_j^{c\pm} x_j^{\pm} + \sum_{j=1}^k \lambda \varpi_j |x_j^{\pm}| + \sum_{j=k+1}^n c_j^{c\pm} x_j^{\pm} + \sum_{j=k+1}^n \lambda \varpi_j |x_j^{\pm}| \right) \quad (3a)$$

subject to:

$$\sum_{j=1}^l a_{ij}^{\pm} x_j^{\pm} + \sum_{j=l+1}^n a_{ij}^{\pm} x_j^{\pm} \leq b_i^{(p_i)\pm}, i = 1, 2, \dots, k \quad (3b)$$

$$C(1 - p_1, 1 - p_2, \dots, 1 - p_k) = 1 - p \quad (3c)$$

$$\sum_{j=1}^l a_{ij}^{\pm} x_j^{\pm} + \sum_{j=l+1}^n a_{ij}^{\pm} x_j^{\pm} \leq b_i^{\pm}, i = k+1, k+2, \dots, m \quad (3d)$$

$$x_j^{\pm} \geq 0, j = 1, 2, \dots, n \quad (3e)$$

where λ means p -necessity level [28]. In this study, two-step method (TSM) is used for obtaining interval values of the CFIP model (i.e. $f_{\text{opt}}^{\pm} = [f_{\text{opt}}^-, f_{\text{opt}}^+]$ and $x_{\text{opt}}^{\pm} = [x_{\text{opt}}^-, x_{\text{opt}}^+]$) under each p level and each λ level [29].

3. Case Study

Henan Province sits in the central China and covers an area of $167 \times 10^3 \text{ km}^2$. It consists of 17 prefectural-level cities and 1 city administrated by province, as shown in Figure 1. In 2017, the gross domestic product (GDP) and total population of Henan reached to RMB¥ 4,498.82 billion and 108.53 million, respectively. Most rivers in Henan originate from mountainous areas in the west, northwest and southeast, among which 560 rivers covering an area of more than 100 km^2 . The annual average amounts of water resources reached 40.35 billion m^3 , ranking 19th in China. However, the per capita water resources were about 383 m^3 , merely accounting for one-fifth of the national average. The limited water resources and increased water demand are increasingly restricting the sustainable development of Henan Province accompanied with anticipated climate change [30].

Place Figure 1 here

1
2
3
4 As a primary agricultural province, agriculture occupies the primary role in the whole water use,
5 followed by the industry, consumption and ecological protection sectors (Figure 2). For Henan
6 Province, several electricity-conversion technologies such as conventional thermal plants
7 (coal-fired power and nature gas-fired power) and renewable-energy based power plants
8 (hydropower, wind, solar and biomass power) are mainly used for satisfying the local electricity
9 demand. Simultaneously, the conversion processes of these facilities also need water in cooling,
10 steam generation, desulfurization and cleaning. In this study, the modeling parameters are
11 presented as interval values, probability distributions, fuzzy sets as well as their correlated dual
12 uncertainties (i.e. interval-fuzzy modulus and interval-random variables). For example, the
13 correlative water-consumption is subjected to a range of factors (i.e. electricity conversion type,
14 cooling mode, as well as other weather conditions) [4]. The pollutant-emission coefficients and
15 other technical parameters (i.e. residual capacity, capacity expansion, service time, energy
16 consumption rate and power consumption rate) are associated with series of factors such as the
17 energy resources type, energy quality, combustion condition and operation condition, as well as
18 other weather conditions [31]. Thus the correlative water-consumption parameters,
19 pollutant-emission coefficients and other technical parameters are expressed as intervals.
20 Economic coefficients which are closely related to the volatility of interest rates, inflation rates
21 and other factors (i.e., energy price, labor fee, and operation condition) are presented as
22 interval-fuzzy modulus with known fuzzy possibility distributions [32]. Water resources
23 availability and electricity demand which are affected by meteorologic, hydrologic and
24 sociometric conditions are presented as interval-random variables [33].

25
26
27
28
29
30
31
32
33
34
35
36
37
38
39
40
41
42
43 -----
44 Place Figure 2
45 -----
46
47
48
49

50 Based on the CFIP method, a provincial-scale CFIP-WEN model is formulated for the purpose of
51 minimizing the system cost, which consists of cost of water resources, energy resources,
52 electricity-generation, -import and -transmission as well as contamination controlling. For
53 example, for a real-world WEN system planning issues, the cost of water resources for electricity
54 generation mainly consists of the processes of cooling, boiling and desulfurization as well as
55 others [32]. Energy import cost includes the cost of importing local and adjacent energies during
56
57
58
59
60

the conversion activities such as the purchase price of energy resources, workers' wage, truck rental fees and the cost for energy transport losses [34]. The electricity-generation cost always covers a wide range which including unit start-up cost, workers' wage, equipment-maintenance cost and taxation expense. The investment for expanding electricity-conversion technologies such as finance investment, labor fee, equipment maintenance and operation cost, as well as taxation expense [31]. And the pollutant and CO_2 treatment costs can be calculated in terms of the associated emission rates and the unit cost of environmental facilities under various process activities [35]. Therefore, the objective function is:

$$\begin{aligned}
& \text{Min } E^{\pm} = \overbrace{\sum_{k=1}^2 \sum_{t=1}^6 EGA_{k,t}^{\pm} \times (CCW_{k,t}^{\pm} \times CW_{k,t}^{\pm} + CBW_{k,t}^{\pm} \times BW_{k,t}^{\pm} + CDW_{k,t}^{\pm} \times DW_{k,t}^{\pm})}^{\text{Cost of water resource for electricity generation}} + \sum_{k=3}^6 \sum_{t=1}^6 EGA_{k,t}^{\pm} \times COW_{k,t}^{\pm} \times OW_{k,t}^{\pm} \\
& + \underbrace{\sum_{k=1}^2 \sum_{t=1}^6 PEC_{k,t}^{\pm} \times EGA_{k,t}^{\pm} \times FE_{k,t}^{\pm} + \sum_{t=1}^6 PEJ_t^{\pm} \times PE_t^{\pm}}_{\text{Cost for importing energy resources and electricity}} + \underbrace{\sum_{k=1}^6 \sum_{t=1}^6 EGA_{k,t}^{\pm} \times CU_{k,t}^{\pm}}_{\text{Cost for electricity transmission}} \\
& + \underbrace{\sum_{k=1}^6 \sum_{t=1}^6 (EGA_{k,t}^{\pm} \times VGC_{k,t}^{\pm}) + \sum_{k=1}^6 FGC_{k,t}^{\pm} \times (RC_{k,t=0}^{\pm} + \sum_{t=1}^6 EC_{k,t}^{\pm})}_{\text{Cost for electricity generation}} + \underbrace{\sum_{k=1}^6 \sum_{t=1}^6 (FEC_{k,t}^{\pm} \times YC_{k,t}^{\pm} + VEC_{k,t}^{\pm} \times EC_{k,t}^{\pm})}_{\text{Cost for capacity expansion}} \\
& + \underbrace{\sum_{k=1}^6 \sum_{t=1}^6 \sum_{q=1}^3 EGA_{k,t}^{\pm} \times (3.6 \times CP_{t,q}^{\pm} + CE_{t,q}^{\pm} / ST_{k,t}^{\pm} - 3.6 \times SU_t^{\pm})}_{\text{Cost for pollutant reduction}} + \underbrace{\sum_{k=1}^6 \sum_{t=1}^6 EGA_{k,t}^{\pm} \times Q_{k,t}^{\pm} \times \mu_{k,t}^{\pm}}_{\text{Cost for } CO_2 \text{ mitigation}}
\end{aligned} \tag{4}$$

The constraints are:

(1) System joint-risk constraint between water resources availability and electricity demand, which is used for guaranteeing that each individual chance constraint should be satisfied the acceptable joint-risk of constraint violation.

$$C(1 - p_1, 1 - p_2) = 1 - p \tag{5}$$

(2) Water resource availability constraint, which is established to ensure that the amount of water consumption must be not less than the total available water resources amounts.

$$\Pr \left\{ \sum_{k=1}^2 EGA_{k,t}^{\pm} \times (CW_{k,t}^{\pm} + BW_{k,t}^{\pm} + DW_{k,t}^{\pm}) + \sum_{k=3}^6 EGA_{k,t}^{\pm} \times OW_{k,t}^{\pm} \leq TAW_t^{\pm} \right\} \geq 1 - p_1 \tag{6}$$

(3) Constraint for water demand-supply, which is formulated to ensure that the total water

consumption (i.e. cooling water, boiler water, desulfurization water and other water) should not be less than the amount of water resources demands.

$$\sum_{k=1}^2 EGA_{k,t}^{\pm} \times (CW_{k,t}^{\pm} + BW_{k,t}^{\pm} + DW_{k,t}^{\pm}) + \sum_{k=3}^6 EGA_{k,t}^{\pm} \times OW_{k,t}^{\pm} \geq WDB_t^{\pm} \quad (7)$$

(4) Energy resource availability constraint: This constraint is established to ensure that the amount of energy utilization must be not less than the total available energy amounts.

$$EGA_{k,t}^{\pm} \times FE_{k,t}^{\pm} \leq AR_{k,t}^{\pm} \quad (8)$$

(5) Capacity limitation constraints: These constraints are established to ensure that the capacity will satisfy the demand of electricity from a long-term planning point of view. The related optimization analysis will require the use of integer variables to indicate whether a particular facility development or expansion option needs to be undertaken.

$$EGA_{k,t}^{\pm} \leq \left(RC_{k,t=0}^{\pm} + \sum_{t'=0}^{t-1} EC_{k,t}^{\pm} \right) \times ST_{k,t}^{\pm} \quad (9a)$$

$$YC_{k,t}^{\pm} \begin{cases} = 1; & \text{if capacity expansion is undertaken} \\ = 0; & \text{if otherwise} \end{cases} \quad (9b)$$

$$0 \leq EC_{k,t}^{\pm} \leq MC_{k,t}^{\pm} \times YC_{k,t}^{\pm} \quad (9c)$$

(6) Constraint for electricity demand-supply: These constraints are established to ensure that the total electricity generated from the existing and future expanding capacities, and purchased from other power grids should not be less than the amount of electricity demands.

$$\Pr \left\{ \left(\sum_{k=1}^6 EGA_{k,t}^{\pm} \times (1 - ZL_{k,t}^{\pm}) \times TE_{k,t}^{\pm} + PE_t^{\pm} \right) \times (1 - \eta_t^{\pm}) \geq EDB_t^{\pm} \right\} \geq 1 - p_2 \quad (10)$$

(7) Constraint for pollutant and CO₂ emissions: These constraints are used for ensuring that the pollutant-emission amounts should be satisfied by the pollutant-emission permits.

$$\sum_{k=1}^6 EGA_{k,t}^{\pm} \times AMR_{k,t,q}^{\pm} \leq ES_{t,q}^{\pm} \quad (11a)$$

$$\sum_{k=1}^6 EGA_{k,t}^{\pm} \times \delta_{k,t}^{\pm} \times (1 - CCA_t^{\pm}) \leq ESC_t^{\pm} \quad (11b)$$

(8) Nonnegative constraints: This constraint assures that only positive electricity-conversion activities are considered in the solution, eliminating infeasibilities while calculating the solution.

$$EGA_{k,t}^{\pm}, PE_t^{\pm}, EC_{k,t}^{\pm} \geq 0 \quad (12)$$

1
2
3
4
5
6 The abbreviation and detailed explanations of system coefficients are given in [Appendix](#). The
7 system coefficients from sociometric, technical, subjective and observed or estimated aspects
8 were collected from the Statistical Yearbook of Henan Province, survey questionnaires and
9 expert consultations, as well as the Henan Provincial Water Resources Bulletin [36-38]. Besides,
10 four classes of copulas such as Clayton, Frank, Gumbel and Student's t copulas were used to
11 model the joint distribution of water resource availability and electricity consumption. The joint
12 cumulative distribution functions for water resources availability and electricity consumption
13 under four copulas were shown in [Figure 3](#). The RMSE, MSE, AIC and BIC values for joint
14 cumulative distributions of these selected copulas were shown in [Table 1](#). Results indicate that
15 Frank copula was superior to other copulas in connecting the marginal distributions of water
16 resource availability and electricity consumption. The selected scenarios for joint and individual
17 constraint-violation levels (p, p_1, p_2) , being $(0.1, 0.02, 0.2)$, $(0.1, 0.1, 0.3188)$,
18 $(0.1, 0.1063, 0.1063)$, $(0.1, 0.15, 0.1001)$ and $(0.1, 0.02, 0.2)$ from scenario 1 to scenario 5
19 (abbreviated as S1, S2, S3, S4 and S5), as detailed in [39].
20
21
22
23
24
25
26
27
28
29
30
31
32
33

34 Place Figure 3, Table 1 here
35
36
37
38
39

40 **4. Result Analysis**

41
42
43 [Figure 4](#) presents the electricity-supply schemes under different scenarios. Summarily, the
44 percentage of electricity by coal-fired power would change with the variation of scenarios, which
45 range from [79.2, 80.8] % (S1) to [81.8, 82.6] % (S5). This is because low water-resources
46 availability would force the managers to select more renewable energy-based electricity owing to
47 the consideration of system reliability, economic development and water consumption;
48 conversely, managers would tend to choose more local fossil energy-based electricity under high
49 water-resources availability. Besides, since the renewable energy-based electricity is subject to
50 the capacity limitation of renewable energy resources, the variation of associated
51 electricity-generation would change very little. [Figure 5](#) presents the electricity-generation
52 pattern for each power plant in each year. Generally, the local electricity supply is primarily
53
54
55
56
57
58
59
60
61
62
63
64
65

1
2
3
4 depending on the coal-fired power even having a decreasing trend from [84.1, 85.5] % to [74.9,
5 76.5] % during the planning horizon. Gas-fired power and hydropower would take minor shares
6 for the WEN system while having an increasing tendency. The remaining power plants such as
7 wind power, solar power and biomass power would occupy small contributions for the local
8 electricity-supply because of the limited energy resources, small capacities, and high investment
9 costs.

10
11
12
13
14
15 -----
16
17 Place Figures 4 and 5 here
18
19 -----
20
21

22 **Figure 6** shows the expanded capacities of power conversion facilities in each year. Summarily,
23 the expanded capacity of each power conversion facility in each year would be different.
24 Coal-fired power would have no expansion scheme while wind power and solar power would
25 have high expansion scheme over the planning horizon. For example, the lower bound of
26 expanded capacity for wind power would be 0.68 GW in year 1, 0.68 GW in year 2, 0.69 GW in
27 year 3, 0.60 GW in year 4, 0.59 GW in year 5 and 0.59 GW in year 6, respectively. This is
28 mainly because decision makers would incline to choose more local electricity-generation having
29 low water-consumption and pollutant-discharge. Moreover, energy management decision makers
30 would prefer to developing local renewable energies in order to improve the local power security
31 and promote urban sustainable development in the long run. **Figure 7** depicts the imported
32 electricity under different scenarios. Results disclose that the imported electricity would decrease
33 with time, and the imported electricity would decrease from $[176.37, 192.66] \times 10^3$ GWh in year
34 1 to $[175.21, 159.70] \times 10^3$ GWh in year 6 under S1. Results also demonstrate that different
35 scenarios would contribute to varied amounts of imported electricity. The variation of imported
36 electricity would change around 16.3% between S1 and S2 at the end planning horizon.

37
38
39
40
41
42
43
44
45
46
47
48
49 -----
50
51 Place Figures 6 and 7 here
52
53 -----
54
55
56

57 **Figure 8** presents the water consumption for each power plant under different scenarios.
58 Generally, interactions of water availability and electricity demand would change the total water
59
60

1
2
3
4 consumption, and the total water consumption would approximately increase by [194.9, 203.4]
5 $\times 10^6 \text{ m}^3$ from S1 to S5. Results also show that coal-fired power consumes more than 90% of the
6 water consumption, and the water consumption of coal-fired power would decrease with time
7 owing to the water availability scenarios (e.g., the more available water resources, the higher
8 coal-fired based electricity). Thus, it is of indispensability to exploit more renewable energies
9 having lower water-requirement to balance contradictions of water demand-supply, electricity
10 demand-supply and pollutant mitigation.
11
12
13
14
15
16

17 -----

18 Place Figure 8 here

19 -----
20
21
22
23

24 **Figure 9** shows the emissions of three air-pollutants (i.e. SO_2 , NO_x and PM_{10}) and CO_2 . Results
25 indicate that different water availability scenarios would affect the electricity-generation pattern
26 and then lead to the variation of pollutant-emission pathway (e.g., the emissions of pollutants
27 would have a downward trend from S5 to S1). Moreover, under S5 (i.e. the water resources
28 availability generates none effects on the coal-fired power), the average amount of CO_2 would
29 decrease from 21.63×10^6 tonne (year 1) to 21.30×10^6 tonne (year 6). This is mainly attributed
30 to the fact that many efforts such as strict mitigation target, policy stimulation for renewable
31 energy and improvement of pollutant-mitigation efficiency play jointly contributions for
32 reducing pollutants and CO_2 emissions. Thus, some new technologies (e.g., wind power and
33 solar power) that can both meet electricity-demand and reduce pollutant emissions should be
34 further adopted.
35
36
37
38
39
40
41
42
43
44

45 -----

46 Place Figure 9 here

47 -----
48
49
50
51

52 Uncertainties existed in modeling parameters would lead to varied system costs. As shown in
53 **Figure 10**, when $\lambda = 1$, system cost would increase by \$ $[0.18, 0.19] \times 10^{12}$ under S1 compared to
54 that under S2, while $[194.9, 203.4] \times 10^6 \text{ m}^3$ of water were saved. It is mainly because a high
55 water-resources availability violation-risk equivalent to an increased coal-fired power generation
56 reliability, leading to a low system cost; while renewable-energy based and extra electricity from
57
58
59
60

1
2
3
4 other power grids become of indispensability in response to a low water-resources availability
5 violation-risk, thus resulting in a high system cost. Moreover, different λ levels correspond to
6 decision makers' different necessity degrees of the system cost, thus leading to changed system
7 costs. For instance, the system cost would vary from \$ $[2.99, 3.39] \times 10^{12}$ ($\lambda = 1$) to \$ $[3.02, 3.42]$
8 $\times 10^{12}$ ($\lambda = 0.65$) under S1. Thus, there exists a trade-off among system cost, risk-averse attitude
9 of decision-maker and water resources availability.
10
11
12
13
14

15 -----
16 Place Figure 10 here
17 -----
18
19
20
21

22 **5. Conclusions**

23
24
25
26 In this study, a CFIP method has been exploited through integration of CRP, IPP and FPP. CFIP
27 can both handle random, interval and interval information and reflect system joint-risk employed
28 to the WEN system of Henan Province, China. Solutions of various copulas associated with
29 different scenarios and necessity degrees are examined in the CFIP-WEN model. CFIP-WEN
30 model has advantages of: (a) disclosing interactions between water resources availability and
31 electricity consumption, and further illustrating their interactive effects on WEN system in
32 association with various scenarios and multiple uncertainties; (b) balancing the conflict among
33 economic objective, water resources shortage and electricity demand, as well as environmental
34 requirement.
35
36
37
38
39
40
41
42
43

44 Solutions for system cost, electricity-supply pattern, water-allocation pattern, and
45 pollutant-emission associated with various scenarios and multiple uncertainties have been
46 achieved. Results indicate that uncertainties and scenarios employed to water resources,
47 electricity demand and other module parameters can generate prominent impacts on the WEN
48 system. Water resources can restrict the local electricity-generation pattern and then lead to the
49 change of system cost, and the system cost would increase by \$ $[0.18, 0.19] \times 10^{12}$ under S1
50 compared to that under S2, while around $[194.9, 203.4] \times 10^6$ m³ of water to be saved. Compared
51 to high water-availability scenario (S5), the share of electricity generated by the coal-fired power
52 can decrease by $[1.8, 2.6]$ % under low water-availability scenario (S1).
53
54
55
56
57
58
59
60

1
2
3
4
5
6 Although CFIP-WEN model has its effectiveness in reflecting the interactions between water
7 resources availability and electricity demand, and providing optimal solutions for WEN
8 management, it neglects the hierarchically conflicting objectives in the WEN system (e.g., the
9 objectives of minimum system cost and minimum water consumption), making the results
10 incapable of presenting the real-world WEN planning issues [40]. Besides, the constraints of the
11 CFIP-WEN model are limited to production-demand relationships, efficiency, storage and
12 operation levels of the electricity-conversion technologies should be further considered in order
13 to improve the robustness of the CFIP-WEN model [41]. In addition, energy- and water-supply
14 security especially for the water-stressed area is an international challenge, some more advanced
15 theory and robust model should be referenced to cope with such increasing energy demand and
16 water shortage [42].
17
18
19
20
21
22
23
24
25
26

27 **Acknowledgements**

28
29
30
31
32 This research was supported by the National Natural Science Foundation of China (51909239),
33 the Key Research Project of Henan Higher Education Institution (20A570001) and the
34 Postdoctoral Foundation of Henan Province (1901008). The authors are grateful to the editors
35 and the anonymous reviewers for their insightful comments and suggestions.
36
37
38
39
40
41
42
43
44
45
46
47
48
49
50
51
52
53
54
55
56
57
58
59
60
61
62
63
64
65

References

- [1] Khalkhali M, Westphal K, Mo WW. The water-energy nexus at water supply and its implications on the integrated water and energy management. *Science of The Total Environment* 2018;636:1257-1267.
- [2] Gjorgiev B, Sansavini G. Water-energy nexus: Impact on electrical energy conversion and mitigation by smart water resources management. *Energy Conversion and Management* 2017;148:1114-1126.
- [3] Fan JL, Kong LS, Wang H, Zhang X. A water-energy nexus review from the perspective of urban metabolism. *Ecological Modelling* 2019;392:128-136.
- [4] Lv J, Li YP, Shan BG, Jin SW, Suo C. Planning energy-water nexus system under multiple uncertainties - A case study of Hebei province. *Applied Energy* 2018;229:389-403.
- [5] Li N, Chen WY. Energy-water nexus in China's energy bases: From the Paris agreement to the Well Below 2 Degrees target. *Energy* 2019;166:277-286.
- [6] Qin Y, Curmi E, Kopec GM, Allwood JM, Richards KS. China's energy-water nexus - assessment of the energy sector's compliance with the "3 Red Lines" industrial water policy. *Energy Policy* 2015;82:131-143.
- [7] Cai YP, Cai JY, Xu LY, Tan Q, Xu Q. Integrated risk analysis of water-energy nexus systems based on systems dynamics, orthogonal design and copula analysis. *Renewable and Sustainable Energy Reviews* 2019;99:125-137.
- [8] Al-Ansari T, Korre A, Nie ZG, Shah N. Development of a life cycle assessment tool for the assessment of food production systems within the energy, water and food nexus. *Sustainable Production and Consumption* 2015;2:52-66.
- [9] Wang SG, Chen B. Energy-water nexus of urban agglomeration based on multiregional input-output tables and ecological network analysis: A case study of the Beijing-Tianjin-Hebei region. *Applied Energy* 2016;178:773-783.
- [10] Chhipi-Shrestha G, Hewage K, Sadiq R. Water-energy-carbon nexus modeling for urban water systems: system dynamics approach. *Journal of Water Resources Planning and Management* 2017;143:04017016.
- [11] Khan HF, Yang YCE, Xie H, Ringler C. A coupled modeling framework for sustainable watershed management in transboundary river basins. *Hydrology and Earth System Sciences*

- 2017;21:6275-6288.
- [12] Yu L, Li YP, Huang GH. A fuzzy-stochastic simulation-optimization model for planning electric power systems with considering peak-electricity demand: A case study of Qingdao, China. *Energy* 2016;98:190-203.
- [13] Cai XM, Wallington K, Shafiee-Jood M, Marston L. Understanding and managing the food-energy-water nexus - opportunities for water resources research. *Advances in Water Resources* 2018;111:259-273.
- [14] Zhang XD, Vesselinov VV. Energy-water nexus: Balancing the tradeoffs between two-level decision makers. *Applied Energy* 2016;183:77-87.
- [15] Bieber N, Ker JH, Wang XN, Triantafyllidis C, van Dam KH, Koppelaar RHEM, Shah N. Sustainable planning of the energy-water-food nexus using decision making tools. *Energy Policy* 2018;113:584-607.
- [16] Li M, Fu Q, Singh VP, Liu D. An interval multi-objective programming model for irrigation water allocation under uncertainty. *Agricultural Water Management* 2018;196:24-36.
- [17] Feng MY, Liu P, Li ZJ, Zhang JW, Liu DD, Xiong LH. Modeling the nexus across water supply, power generation and environment systems using the system dynamics approach: Hehuang Region, China. *Journal of Hydrology* 2016;543, Part B:344-359.
- [18] Pahl-Wostl C. Governance of the water-energy-food security nexus: A multi-level coordination challenge. *Environmental Science & Policy* 2019;92:356-367.
- [19] Thiede S, Schönemann M, Kurle D, Herrmann C. Multi-level simulation in manufacturing companies: The water-energy nexus case. *Journal of Cleaner Production* 2016;139:1118-1127.
- [20] Su JX, Furman E. Multiple risk factor dependence structures: Copulas and related properties. *Insurance: Mathematics and Economics* 2017;74:109-121.
- [21] Nelsen RB. *An introduction to copulas*. New York: Springer, 1999. ISBN 0-387-98623-5.
- [22] Charnes A, Cooper WW. Response to decision problems under risk and chance constrained programming: dilemmas in the transitions. *Management Science* 1983;29(6):750-753.
- [23] Chen F, Huang GH, Fan YR, Chen JP. A copula-based fuzzy chance-constrained programming model and its application to electric power generation systems planning. *Applied Energy* 2017;187:291-309.
- [24] Simic V, Dabic-Ostojic S. Interval-parameter chance-constrained programming model for

- 1
2
3
4 uncertainty-based decision making in tire retreading industry. *Journal of Cleaner Production*
5 2017;167:1490-1498.
6
7
8 [25] Li YP, Nie S, Huang CZ, McBean EA, Fan YR, Huang GH. An integrated risk analysis
9 method for planning water resource systems to support sustainable development of an arid
10 region. *Journal of Environmental Informatics*. 2017;29(1):1-15.
11
12 [26] Yu L, Li YP, Huang GH. Planning municipal-scale mixed energy system for stimulating
13 renewable energy under multiple uncertainties-The City of Qingdao in Shandong Province,
14 China. *Energy* 2019;166:1120-1133.
15
16 [27] Inuiguchi M, Ramik J. Possibilistic linear programming: a brief review of fuzzy
17 mathematical programming and a comparison stochastic programming in portfolio selection
18 problem. *Fuzzy Sets and Systems* 2000;111:3-28.
19
20 [28] Zhou Y, Li YP, Huang GH, Zhou Y. A robust approach for planning electric power systems
21 associated with environmental policy analysis. *Electric Power Systems Research*
22 2013;95:99-111.
23
24 [29] Huang GH, Baetz BW, Patry GG. A grey linear programming approach for municipal solid
25 waste management planning under uncertainty. *Civil Engineering Systems*
26 1992;9(4):319-335.
27
28 [30] Yin YY, Tang QH, Liu XC, Zhang XJ. Water scarcity under various socio-economic
29 pathways and its potential effects on food production in the Yellow River basin. *Hydrology*
30 and *Earth System Sciences* 2017;21:791-804.
31
32 [31] Li YP, Huang GH. Electric-power systems planning and greenhouse-gas emission
33 management under uncertainty. *Energy Conversion and Management* 2012;57:173-182.
34
35 [32] Liu J, Li YP, Huang GH, Suo C, Yin S. An interval fuzzy-stochastic chance-constrained
36 programming based energy-water nexus model for planning electric power systems. *Energies*
37 2017;10(11):1914.
38
39 [33] Yu L, Li YP, Huang GH, Fan YR, Nie S. A copula-based flexible-stochastic programming
40 method for planning regional energy system under multiple uncertainties: A case study of the
41 urban agglomeration of Beijing and Tianjin. *Applied Energy* 2018;210:60-74.
42
43 [34] Zhu Y, Li YP, Huang GH. Planning carbon emission trading for Beijing's electric power
44 systems under dual uncertainties. *Renewable and Sustainable Energy Reviews*
45 2013;23:113-128.
46
47
48
49
50
51
52
53
54
55
56
57
58
59
60
61
62
63
64
65

- 1
2
3
4 [35] Jin SW, Li YP, Xu LP. Development of an integrated model for energy systems planning
5 and carbon dioxide mitigation under uncertainty - Tradeoffs between two-level decision
6 makers. *Environmental Research* 2018;164:367-378.
7
8
9
10 [36] The 13th Five-year Energy Development Plan of Henan Province. The People's Government
11 of Henan Province; 2017. Available at: <
12 <https://www.henan.gov.cn/2017/05-24/270780.html> >.
13
14
15 [37] Henan Provincial Water Resources Bulletin. Henan Provincial Department of Water
16 Resources; 2017. Available at: <
17 <http://www.hnsl.gov.cn/gallery/8aa98d9267305a9a0167e45e76825bf5.html> >.
18
19
20 [38] Henan Statistical Yearbook. Henan Provincial Bureau of Statistics; 2018. Available at: <
21 <http://www.ha.stats.gov.cn/hntj/lib/tjnj/2018/indexch.htm> >.
22
23
24 [39] Yu L, Li QW, Jin SW, Chen C, Li YP, Fan YR, Zuo QT. A two-level based copula
25 interval-stochastic programming approach for planning energy-water nexus system
26 management under uncertainty. *Journal of Hydrology* HYDROL32062R1.
27
28
29
30 [40] Chen YZ, He L, Li J, Cheng X, Lu HW. An inexact bi-level simulation-optimization model
31 for conjunctive regional renewable energy planning and air pollution control for electric
32 power generation systems. *Applied Energy* 2016;183:969-983.
33
34
35 [41] Kuang JY, Zhang CH, Sun B. Stochastic dynamic solution for off-design operation
36 optimization of combined cooling, heating, and power systems with energy storage. *Applied*
37 *Thermal Engineering* 2019, accept. Available at <
38 <https://doi.org/10.1016/j.applthermaleng.2019.114356> >.
39
40
41
42 [42] Zhang C, Chen XX, Li Y, Ding W, Fu GT. Water-energy-food nexus: Concepts, questions
43 and methodologies. *Journal of Cleaner Production* 2018;195:625-639.
44
45
46
47
48
49
50
51
52
53
54
55
56
57
58
59
60
61
62
63
64
65

1
2
3
4 **A copula-based fuzzy interval-random programming approach for planning water-energy**
5 **nexus system under uncertainty**
6

7
8 L. Yu^{1*}, Y. Xiao², S. Jiang^{3*}, Y.P. Li⁴, Y.R. Fan⁵, G.H. Huang⁶, J. Lv⁷, Q.T. Zuo⁸, F.Q. Wang⁹
9

10
11 ^{1*} (Corresponding Author) School of Water Conservancy Engineering, Zhengzhou University, Zhengzhou
12 450001, China; Zhengzhou Key Laboratory of Water Resource and Environment, Zhengzhou, 450001,
13 China; Henan Key Laboratory of Groundwater Pollution Prevention and Rehabilitation, Zhengzhou,
14 450001, China; E-mail: yulei2018@zzu.edu.cn
15

16
17 ² School of Water Conservancy Engineering, Zhengzhou University, Zhengzhou 450001, China; E-mail:
18 xiaoyaocs@163.com
19

20
21 ^{3*} (Corresponding Author) Department of water resources, China Institute of Water Resources and
22 Hydropower Research, Beijing 100038, China; E-mail: jiangs@iwhr.com
23

24
25 ⁴ School of Environment, Beijing Normal University, Beijing 100875, China; E-mail:
26 yongping.li@iseis.org
27

28
29 ⁵ Department of Civil and Environmental Engineering, Brunel University London, Uxbridge, UB8 3PH,
30 United Kingdom; E-mail: yurui.fan@gmail.com
31

32
33 ⁶ Institute for Energy, Environment and Sustainable Communities, University of Regina, Regina, Sask.
34 S4S 7H9, Canada; E-mail: gordon.huang@uregina.ca
35

36
37 ⁷ Sino-Canada Energy and Environmental Research Center, North China Electric Power University,
38 Beijing 102206, China; E-mail: 291697439@qq.com
39

40
41 ⁸ School of Water Conservancy Engineering, Zhengzhou University, Zhengzhou 450001, China; E-mail:
42 zuoqt@zzu.edu.cn
43

44
45
46
47
48
49
50
51
52
53
54
55
56
57
58
59
60
61
62
63
64
65
⁹ Department of Water Conservancy Engineering, North China University of Water Resources and Electric
Power, Zhengzhou 450046, China; E-mail: wangfuqiang@ncwu.edu.cn

1
2
3
4
5
6 **Abstract**
7
8
9

10 Water and energy are closely linked and restrict each other, which has become major restraints to
11 urban development associated with constricted water availability, increased electricity demand
12 and limited environmental capacity. In this study, a copula-based fuzzy interval-random
13 programming method is proposed through integration of copula-based random programming,
14 interval-parameter programming and fuzzy possibilistic programming. It can both handle random,
15 interval and fuzzy information and reflect system joint-risk existed in the water-energy nexus
16 system of Henan Province, China. A class of copulas associated with different water
17 resource-availability and electricity-consumption scenarios as well as various uncertainties are
18 examined. Results disclose that: a) uncertainties and scenarios employed to water resources,
19 electricity demand and other module parameters can generate prominent impacts on the future
20 water-energy nexus system; b) the percentage of electricity by coal-fired power can decrease by
21 [1.8, 2.6] % under low water-availability scenario compared to high water-availability scenario.
22 Findings can provide optimal electricity-supply schemes under the conflicts among economic
23 objective, water resources shortage and electricity demand, as well as environmental
24 requirement.
25
26
27
28
29
30
31
32
33
34
35
36
37
38
39
40

41 **Keywords:** copula, interaction, joint risk, uncertainty, water-energy nexus system
42
43
44
45
46
47
48
49
50
51
52
53
54
55
56
57
58
59
60
61
62
63
64
65

1. Introduction

1.1 Importance

Water and energy, the world's two most critical resources, are gaining international attention from both the general public and the academia [1]. Water and energy are closely linked. The supply, transportation and treatment of water resources need to consume a large amount of energy, while the whole process of energy production from mineral exploitation to electricity generation needs to be completed under the action of water cleaning, cooling and conduction [2]. Water and energy are interdependent and restrict each other, which has become major restraints to urban development [3]. China, a largest developing country around the world, occupies 21% of the world's energy consumption and holds 6% of the global fresh water sources [4]. The contradictions among water, energy, air pollution and carbon dioxide (CO₂) emissions are increasingly deteriorative. Moreover, the primary energy bases in China are among the most water-stressed area of the country [5]. Such mismatched geographical space further aggravates the challenge between water shortage and energy security. Although several polices such as "3 Red lines" and "Water allocation plan for coal bases" were enacted to reduce water utilization, improve water efficiency and reduce sewage water discharges in the coal sector, particularly for further managing future coal-fired power plants in water-scarce regions [6]. However, in real-world water-energy nexus (WEN) problems, water and energy resources are associated with social, economic, managerial and environmental limitations [7]. Above of which force researchers to propose effective strategies toward the energy system's water utilization in a mutually-beneficial manner between economic development and environmental mitigation.

1.2 Literature review

Previously, numerous studies were focused on quantitatively analyzing WEN system. For example, Al-Ansari et al. [8] adopted a life cycle assessment (LCA) approach to assess the nexus of water-energy-food (WEF) in food production systems. Wang and Chen [9] developed a multi-regional network model for planning the WEN of Beijing-Tianjin-Hebei urban agglomeration. Chhipi-Shrestha et al. [10] used a system dynamic modelling (SDM) to recognize

1
2
3
4 key factors for the urban water system in Penticton. [Khan et al. \[11\]](#) formulated an integrated
5 agent-based modelling ABM-SWAT (soil and water-assessment tool) model for analyzing the
6 water-energy-food-environment (WEFE) nexus system management in transboundary river
7 basins. Summarily, the above studies are mainly focused on dealing with WEN problems when
8 their system components were deterministic. However, some coefficients are not obtained as
9 deterministic due to the inaccuracy of empirical observations and estimations [\[12\]](#). Thus, it is of
10 indispensability to exploit more robust optimization techniques for planning WEN corresponding
11 to the associated complexities and uncertainties [\[13\]](#).
12
13
14
15
16
17
18
19

20
21 Recently, lots of efforts were made in WEN for dealing with uncertainties such as integrated
22 energy system modelling (IESM), multi-objective programming (MOP), two-level programming
23 (TLP), system dynamics approach (SDA). For example, [Zhang and Vesselinov \[14\]](#) proposed a
24 bi-level model for handling the tradeoffs in WEN problems. [Bieber et al. \[15\]](#) developed an
25 integrated modelling for the WEF nexus system, where ABM was used for simulating varied
26 resource demands and scenario-based approaches were used for presenting different policies. [Li
27 et al. \[16\]](#) used an incorporated multi-objective programming method to planning the agricultural
28 WEF, where contradictions among water, energy, food and land are handled. [Feng et al. \[17\]](#)
29 used the system dynamics approach for modeling the nexus across water, power and
30 environment in Hehuang Region, China. In general, the above studies mainly focused on
31 handling WEN tradeoffs through using the modeled scenarios among different policies or varied
32 views of decision makers, and overall satisfaction of the two-level decision makers [\[18\]](#).
33 However, few of them are specialized in analyzing the intricate and complex interactions of the
34 WEN system. For a real-world WEN system, it includes two subsystems (water subsystem and
35 energy subsystem), and each contains multiple layers and components. Every component in each
36 subsystem can result in changed influence on the other subsystem and pose joint shortage risk
37 between water and energy [\[19\]](#). Copula approach has its effectiveness in reflecting
38 joint-violation risk through modeling multivariate joint distributions [\[20\]](#).
39
40
41
42
43
44
45
46
47
48
49
50
51
52
53

54 55 56 *1.3 Contribution* 57 58 59 60 61 62 63 64 65

1
2
3
4 This study aims to propose a copula-based fuzzy interval-random programming (CFIP) approach
5 for multi-uncertainty reflection by combining copula-based random programming (CRP),
6 interval-parameter programming (IPP) and fuzzy possibilistic programming (FPP). Compared to
7 the deterministic quantitatively analysis methods in [Al-Ansari et al. \[8\]](#), [Wang and Chen \[9\]](#),
8 [Chhipi-Shrestha et al. \[10\]](#) and [Khan et al. \[11\]](#), CFIP can handle complexities and uncertainties
9 existing in WEN management problems. In comparison with the inexact optimization methods in
10 [Zhang and Vesselinov \[14\]](#), [Bieber et al. \[15\]](#), [Li et al. \[16\]](#), and [Feng et al. \[17\]](#), CFIP can not
11 only deal with uncertainties presented by the interval and fuzzy information but also tackle the
12 random water resources availability and electricity demand as well as the correlative system
13 joint-risk. Summarily, CFIP combines the superiority of CRP, IPP and FPP into one framework,
14 which can efficaciously: (a) deal with the uncertainties expressed as random variables, interval
15 values and fuzzy sets as well as their combinations (i.e. interval-fuzzy modulus and
16 interval-random variables); (b) reveal the water-shortage risk, electricity-shortage risk as their
17 correlated joint-shortage risk. Then, a CFIP-WEN model is developed and then applied to the
18 WEN system of Henan Province, China. In the CFIP-WEN model, four classes of copulas (i.e.
19 Clayton, Frank, Gumbel and Student's t copulas), five scenarios with different groups of water
20 resources availability and electricity consumption, four λ levels corresponding to decision
21 makers' different necessity degrees of the system cost are considered. Results will help decision
22 makers: (a) identify the desired electricity-supply patterns under the conflicts among economic
23 objective, water resources shortage and electricity demand as well as environmental requirement;
24 (b) analyze interactions between water resources availability and electricity consumption, and
25 disclose their joint risk on WEN system associated with different scenarios.
26
27
28
29
30
31
32
33
34
35
36
37
38
39
40
41
42
43
44

45 **2. Methodology**

46
47
48
49
50 CRP has advantages of capturing the dependence of bivariate or multivariate random variables
51 and binding disparate univariate marginal distributions together through constructing their joint
52 distribution based on a copula function [\[21\]](#). According to [Charnes and Cooper \[22\]](#), [Chen et al.](#)
53 [\[23\]](#), [Simic and Dabic-Ostojic \[24\]](#), a generic CRP model can be depicted as
54
55
56

$$57 \text{Min } E = \sum_{j=1}^n c_j x_j \quad (1a)$$

subject to:

$$\sum_{j=1}^n a_{ij} x_j \leq b_i^{p_i}, i = 1, 2, \dots, k \quad (1b)$$

$$C(1 - p_1, 1 - p_2, \dots, 1 - p_k) = 1 - p \quad (1c)$$

$$\sum_{j=1}^n a_{ij} x_j \leq b_i, i = k + 1, k + 2, \dots, m \quad (1d)$$

$$x_j \geq 0, j = 1, 2, \dots, n \quad (1e)$$

where x_j are decision variables; a_{ij} and b_i are coefficients; $b_i^{p_i}$ are random variables; C is the determinate copula; p_i ($i = 1, 2, \dots, k$) are constraint-violation levels; $b_i^{p_i} = F_i^{-1}(p_i)$.

For a real-world WEN system, some economic parameters are affected by the socio-economic, political, legislation and technical factors, which can hard to be achieved as stochastic variables but can be presented as interval values through using the IPP technique [25]. Some imprecise data can rarely be achieved as randomness and interval but can be presented by fuzzy sets [26]. Through introducing IPP and FPP into CRP, a CFIP model can be formulated as:

$$\text{Min } \tilde{E}^{\pm} = \sum_{j=1}^n \tilde{c}_j^{\pm} x_j^{\pm} \quad (2a)$$

subject to:

$$\sum_{j=1}^n a_{ij}^{\pm} x_j^{\pm} \leq b_i^{(p_i)\pm}, i = 1, 2, \dots, k \quad (2b)$$

$$C(1 - p_1, 1 - p_2, \dots, 1 - p_k) = 1 - p \quad (2c)$$

$$\sum_{j=1}^n a_{ij}^{\pm} x_j^{\pm} \leq b_i^{\pm}, i = k + 1, k + 2, \dots, m \quad (2d)$$

$$x_j^{\pm} \geq 0, j = 1, 2, \dots, n \quad (2e)$$

where $a_{ij}^{\pm} \in \{R^{\pm}\}^{m \times n}$, $b_i^{\pm} \in \{R^{\pm}\}^{m \times 1}$, $\tilde{c}_j^{\pm} \in \{R^{\pm}\}^{1 \times n}$, $x_j^{\pm} \in \{R^{\pm}\}^{n \times 1}$; R^{\pm} mean interval numbers; \tilde{c}_j^{\pm} represent fuzzy-boundary intervals. Based on Inuiguchi and Ramik [27], Model (2) can be converted into:

$$\text{Min } \tilde{E}^{\pm} = \left(\sum_{j=1}^k c_j^{c\pm} x_j^{\pm} + \sum_{j=1}^k \lambda \varpi_j |x_j^{\pm}| + \sum_{j=k+1}^n c_j^{c\pm} x_j^{\pm} + \sum_{j=k+1}^n \lambda \varpi_j |x_j^{\pm}| \right) \quad (3a)$$

subject to:

$$\sum_{j=1}^l a_{ij}^{\pm} x_j^{\pm} + \sum_{j=l+1}^n a_{ij}^{\pm} x_j^{\pm} \leq b_i^{(p_i)\pm}, i = 1, 2, \dots, k \quad (3b)$$

$$C(1 - p_1, 1 - p_2, \dots, 1 - p_k) = 1 - p \quad (3c)$$

$$\sum_{j=1}^l a_{ij}^{\pm} x_j^{\pm} + \sum_{j=l+1}^n a_{ij}^{\pm} x_j^{\pm} \leq b_i^{\pm}, i = k+1, k+2, \dots, m \quad (3d)$$

$$x_j^{\pm} \geq 0, j = 1, 2, \dots, n \quad (3e)$$

where λ means p -necessity level [28]. In this study, two-step method (TSM) is used for obtaining interval values of the CFIP model (i.e. $f_{\text{opt}}^{\pm} = [f_{\text{opt}}^-, f_{\text{opt}}^+]$ and $x_{\text{opt}}^{\pm} = [x_{\text{opt}}^-, x_{\text{opt}}^+]$) under each p level and each λ level [29].

3. Case Study

Henan Province sits in the central China and covers an area of $167 \times 10^3 \text{ km}^2$. It consists of 17 prefectural-level cities and 1 city administrated by province, as shown in Figure 1. In 2017, the gross domestic product (GDP) and total population of Henan reached to RMB¥ 4,498.82 billion and 108.53 million, respectively. Most rivers in Henan originate from mountainous areas in the west, northwest and southeast, among which 560 rivers covering an area of more than 100 km^2 . The annual average amounts of water resources reached 40.35 billion m^3 , ranking 19th in China. However, the per capita water resources were about 383 m^3 , merely accounting for one-fifth of the national average. The limited water resources and increased water demand are increasingly restricting the sustainable development of Henan Province accompanied with anticipated climate change [30].

Place Figure 1 here

1
2
3
4 As a primary agricultural province, agriculture occupies the primary role in the whole water use,
5 followed by the industry, consumption and ecological protection sectors (Figure 2). For Henan
6 Province, several electricity-conversion technologies such as conventional thermal plants
7 (coal-fired power and nature gas-fired power) and renewable-energy based power plants
8 (hydropower, wind, solar and biomass power) are mainly used for satisfying the local electricity
9 demand. Simultaneously, the conversion processes of these facilities also need water in cooling,
10 steam generation, desulfurization and cleaning. In this study, the modeling parameters are
11 presented as interval values, probability distributions, fuzzy sets as well as their correlated dual
12 uncertainties (i.e. interval-fuzzy modulus and interval-random variables). For example, the
13 correlative water-consumption is subjected to a range of factors (i.e. electricity conversion type,
14 cooling mode, as well as other weather conditions) [4]. The pollutant-emission coefficients and
15 other technical parameters (i.e. residual capacity, capacity expansion, service time, energy
16 consumption rate and power consumption rate) are associated with series of factors such as the
17 energy resources type, energy quality, combustion condition and operation condition, as well as
18 other weather conditions [31]. Thus the correlative water-consumption parameters,
19 pollutant-emission coefficients and other technical parameters are expressed as intervals.
20 Economic coefficients which are closely related to the volatility of interest rates, inflation rates
21 and other factors (i.e., energy price, labor fee, and operation condition) are presented as
22 interval-fuzzy modulus with known fuzzy possibility distributions [32]. Water resources
23 availability and electricity demand which are affected by meteorologic, hydrologic and
24 sociometric conditions are presented as interval-random variables [33].
25
26
27
28
29
30
31
32
33
34
35
36
37
38
39
40
41
42

43 -----
44 Place Figure 2
45 -----
46
47

48
49
50 Based on the CFIP method, a provincial-scale CFIP-WEN model is formulated for the purpose of
51 minimizing the system cost, which consists of cost of water resources, energy resources,
52 electricity-generation, -import and -transmission as well as contamination controlling. For
53 example, for a real-world WEN system planning issues, the cost of water resources for electricity
54 generation mainly consists of the processes of cooling, boiling and desulfurization as well as
55 others [32]. Energy import cost includes the cost of importing local and adjacent energies during
56
57
58
59
60
61
62
63
64
65

the conversion activities such as the purchase price of energy resources, workers' wage, truck rental fees and the cost for energy transport losses [34]. The electricity-generation cost always covers a wide range which including unit start-up cost, workers' wage, equipment-maintenance cost and taxation expense. The investment for expanding electricity-conversion technologies such as finance investment, labor fee, equipment maintenance and operation cost, as well as taxation expense [31]. And the pollutant and CO_2 treatment costs can be calculated in terms of the associated emission rates and the unit cost of environmental facilities under various process activities [35]. Therefore, the objective function is:

$$\begin{aligned}
\text{Min } E^\pm &= \overbrace{\sum_{k=1}^2 \sum_{t=1}^6 EGA_{k,t}^\pm \times (CCW_{k,t}^\pm \times CW_{k,t}^\pm + CBW_{k,t}^\pm \times BW_{k,t}^\pm + CDW_{k,t}^\pm \times DW_{k,t}^\pm)}^{\text{Cost of water resource for electricity generation}} + \sum_{k=3}^6 \sum_{t=1}^6 EGA_{k,t}^\pm \times COW_{k,t}^\pm \times OW_{k,t}^\pm \\
&+ \underbrace{\sum_{k=1}^2 \sum_{t=1}^6 PEC_{k,t}^\pm \times EGA_{k,t}^\pm \times FE_{k,t}^\pm + \sum_{t=1}^6 PEJ_t^\pm \times PE_t^\pm}_{\text{Cost for importing energy resources and electricity}} + \underbrace{\sum_{k=1}^6 \sum_{t=1}^6 EGA_{k,t}^\pm \times CU_{k,t}^\pm}_{\text{Cost for electricity transmission}} \\
&+ \underbrace{\sum_{k=1}^6 \sum_{t=1}^6 (EGA_{k,t}^\pm \times VGC_{k,t}^\pm)}_{\text{Cost for electricity generation}} + \underbrace{\sum_{k=1}^6 FGC_{k,t}^\pm \times \left(RC_{k,t=0}^\pm + \sum_{t=1}^6 EC_{k,t}^\pm \right)}_{\text{Cost for capacity expansion}} + \sum_{k=1}^6 \sum_{t=1}^6 (FEC_{k,t}^\pm \times YC_{k,t}^\pm + VEC_{k,t}^\pm \times EC_{k,t}^\pm) \\
&+ \underbrace{\sum_{k=1}^6 \sum_{t=1}^6 \sum_{q=1}^3 EGA_{k,t}^\pm \times (3.6 \times CP_{t,q}^\pm + CE_{t,q}^\pm / ST_{k,t}^\pm - 3.6 \times SU_t^\pm)}_{\text{Cost for pollutant reduction}} + \underbrace{\sum_{k=1}^6 \sum_{t=1}^6 EGA_{k,t}^\pm \times Q_{k,t}^\pm \times \mu_{k,t}^\pm}_{\text{Cost for } CO_2 \text{ mitigation}}
\end{aligned} \tag{4}$$

The constraints are:

(1) *System joint-risk constraint between water resources availability and electricity demand, which is used for guaranteeing that each individual chance constraint should be satisfied the acceptable joint-risk of constraint violation.*

$$C(1 - p_1, 1 - p_2) = 1 - p \tag{5}$$

(2) *Water resource availability constraint, which is established to ensure that the amount of water consumption must be not less than the total available water resources amounts.*

$$\Pr \left\{ \sum_{k=1}^2 EGA_{k,t}^\pm \times (CW_{k,t}^\pm + BW_{k,t}^\pm + DW_{k,t}^\pm) + \sum_{k=3}^6 EGA_{k,t}^\pm \times OW_{k,t}^\pm \leq TAW_t^\pm \right\} \geq 1 - p_1 \tag{6}$$

(3) *Constraint for water demand-supply, which is formulated to ensure that the total water*

consumption (i.e. cooling water, boiler water, desulfurization water and other water) should not be less than the amount of water resources demands.

$$\sum_{k=1}^2 EGA_{k,t}^{\pm} \times (CW_{k,t}^{\pm} + BW_{k,t}^{\pm} + DW_{k,t}^{\pm}) + \sum_{k=3}^6 EGA_{k,t}^{\pm} \times OW_{k,t}^{\pm} \geq WDB_t^{\pm} \quad (7)$$

(4) *Energy resource availability constraint: This constraint is established to ensure that the amount of energy utilization must be not less than the total available energy amounts.*

$$EGA_{k,t}^{\pm} \times FE_{k,t}^{\pm} \leq AR_{k,t}^{\pm} \quad (8)$$

(5) *Capacity limitation constraints: These constraints are established to ensure that the capacity will satisfy the demand of electricity from a long-term planning point of view. The related optimization analysis will require the use of integer variables to indicate whether a particular facility development or expansion option needs to be undertaken.*

$$EGA_{k,t}^{\pm} \leq \left(RC_{k,t=0}^{\pm} + \sum_{t'=0}^{t-1} EC_{k,t}^{\pm} \right) \times ST_{k,t}^{\pm} \quad (9a)$$

$$YC_{k,t}^{\pm} \begin{cases} = 1; & \text{if capacity expansion is undertaken} \\ = 0; & \text{if otherwise} \end{cases} \quad (9b)$$

$$0 \leq EC_{k,t}^{\pm} \leq MC_{k,t}^{\pm} \times YC_{k,t}^{\pm} \quad (9c)$$

(6) *Constraint for electricity demand-supply: These constraints are established to ensure that the total electricity generated from the existing and future expanding capacities, and purchased from other power grids should not be less than the amount of electricity demands.*

$$\Pr \left\{ \left(\sum_{k=1}^6 EGA_{k,t}^{\pm} \times (1 - ZL_{k,t}^{\pm}) \times TE_{k,t}^{\pm} + PE_t^{\pm} \right) \times (1 - \eta_t^{\pm}) \geq EDB_t^{\pm} \right\} \geq 1 - p_2 \quad (10)$$

(7) *Constraint for pollutant and CO₂ emissions: These constraints are used for ensuring that the pollutant-emission amounts should be satisfied by the pollutant-emission permits.*

$$\sum_{k=1}^6 EGA_{k,t}^{\pm} \times AMR_{k,t,q}^{\pm} \leq ES_{t,q}^{\pm} \quad (11a)$$

$$\sum_{k=1}^6 EGA_{k,t}^{\pm} \times \delta_{k,t}^{\pm} \times (1 - CCA_t^{\pm}) \leq ESC_t^{\pm} \quad (11b)$$

(8) *Nonnegative constraints: This constraint assures that only positive electricity-conversion activities are considered in the solution, eliminating infeasibilities while calculating the solution.*

$$EGA_{k,t}^{\pm}, PE_t^{\pm}, EC_{k,t}^{\pm} \geq 0 \quad (12)$$

1
2
3
4
5
6 The abbreviation and detailed explanations of system coefficients are given in [Appendix](#). The
7 system coefficients from sociometric, technical, subjective and observed or estimated aspects
8 were collected from the Statistical Yearbook of Henan Province, survey questionnaires and
9 expert consultations, as well as the Henan Provincial Water Resources Bulletin [36-38]. Besides,
10 four classes of copulas such as Clayton, Frank, Gumbel and Student's t copulas were used to
11 model the joint distribution of water resource availability and electricity consumption. The joint
12 cumulative distribution functions for water resources availability and electricity consumption
13 under four copulas were shown in [Figure 3](#). The RMSE, MSE, AIC and BIC values for joint
14 cumulative distributions of these selected copulas were shown in [Table 1](#). Results indicate that
15 Frank copula was superior to other copulas in connecting the marginal distributions of water
16 resource availability and electricity consumption. The selected scenarios for joint and individual
17 constraint-violation levels (p, p_1, p_2) , being $(0.1, 0.02, 0.2)$, $(0.1, 0.1, 0.3188)$,
18 $(0.1, 0.1063, 0.1063)$, $(0.1, 0.15, 0.1001)$ and $(0.1, 0.02, 0.2)$ from scenario 1 to scenario 5
19 (abbreviated as S1, S2, S3, S4 and S5), as detailed in [39].
20
21
22
23
24
25
26
27
28
29
30
31
32

33 -----
34 Place Figure 3, Table 1 here
35 -----
36
37
38
39

40 **4. Result Analysis**

41
42
43 [Figure 4](#) presents the electricity-supply schemes under different scenarios. Summarily, the
44 percentage of electricity by coal-fired power would change with the variation of scenarios, which
45 range from [79.2, 80.8] % (S1) to [81.8, 82.6] % (S5). This is because low water-resources
46 availability would force the managers to select more renewable energy-based electricity owing to
47 the consideration of system reliability, economic development and water consumption;
48 conversely, managers would tend to choose more local fossil energy-based electricity under high
49 water-resources availability. Besides, since the renewable energy-based electricity is subject to
50 the capacity limitation of renewable energy resources, the variation of associated
51 electricity-generation would change very little. [Figure 5](#) presents the electricity-generation
52 pattern for each power plant in each year. Generally, the local electricity supply is primarily
53
54
55
56
57
58
59
60
61
62
63
64
65

1
2
3
4 depending on the coal-fired power even having a decreasing trend from [84.1, 85.5] % to [74.9,
5 76.5] % during the planning horizon. Gas-fired power and hydropower would take minor shares
6 for the WEN system while having an increasing tendency. The remaining power plants such as
7 wind power, solar power and biomass power would occupy small contributions for the local
8 electricity-supply because of the limited energy resources, small capacities, and high investment
9 costs.

10
11
12
13
14
15 -----
16
17 Place Figures 4 and 5 here
18
19 -----
20
21

22 **Figure 6** shows the expanded capacities of power conversion facilities in each year. Summarily,
23 the expanded capacity of each power conversion facility in each year would be different.
24 Coal-fired power would have no expansion scheme while wind power and solar power would
25 have high expansion scheme over the planning horizon. For example, the lower bound of
26 expanded capacity for wind power would be 0.68 GW in year 1, 0.68 GW in year 2, 0.69 GW in
27 year 3, 0.60 GW in year 4, 0.59 GW in year 5 and 0.59 GW in year 6, respectively. This is
28 mainly because decision makers would incline to choose more local electricity-generation having
29 low water-consumption and pollutant-discharge. Moreover, energy management decision makers
30 would prefer to developing local renewable energies in order to improve the local power security
31 and promote urban sustainable development in the long run. **Figure 7** depicts the imported
32 electricity under different scenarios. Results disclose that the imported electricity would decrease
33 with time, and the imported electricity would decrease from $[176.37, 192.66] \times 10^3$ GWh in year
34 1 to $[175.21, 159.70] \times 10^3$ GWh in year 6 under S1. Results also demonstrate that different
35 scenarios would contribute to varied amounts of imported electricity. The variation of imported
36 electricity would change around 16.3% between S1 and S2 at the end planning horizon.

37
38
39
40
41
42
43
44
45
46
47
48
49 -----
50
51 Place Figures 6 and 7 here
52
53 -----
54
55
56

57 **Figure 8** presents the water consumption for each power plant under different scenarios.
58 Generally, interactions of water availability and electricity demand would change the total water
59
60

1
2
3
4 consumption, and the total water consumption would approximately increase by [194.9, 203.4]
5 $\times 10^6 \text{ m}^3$ from S1 to S5. Results also show that coal-fired power consumes more than 90% of the
6 water consumption, and the water consumption of coal-fired power would decrease with time
7 owing to the water availability scenarios (e.g., the more available water resources, the higher
8 coal-fired based electricity). Thus, it is of indispensability to exploit more renewable energies
9 having lower water-requirement to balance contradictions of water demand-supply, electricity
10 demand-supply and pollutant mitigation.
11
12
13
14
15
16

17 -----

18 Place Figure 8 here

19 -----
20
21
22
23

24 **Figure 9** shows the emissions of three air-pollutants (i.e. SO_2 , NO_x and PM_{10}) and CO_2 . Results
25 indicate that different water availability scenarios would affect the electricity-generation pattern
26 and then lead to the variation of pollutant-emission pathway (e.g., the emissions of pollutants
27 would have a downward trend from S5 to S1). Moreover, under S5 (i.e. the water resources
28 availability generates none effects on the coal-fired power), the average amount of CO_2 would
29 decrease from 21.63×10^6 tonne (year 1) to 21.30×10^6 tonne (year 6). This is mainly attributed
30 to the fact that many efforts such as strict mitigation target, policy stimulation for renewable
31 energy and improvement of pollutant-mitigation efficiency play jointly contributions for
32 reducing pollutants and CO_2 emissions. Thus, some new technologies (e.g., wind power and
33 solar power) that can both meet electricity-demand and reduce pollutant emissions should be
34 further adopted.
35
36
37
38
39
40
41
42
43
44

45 -----

46 Place Figure 9 here

47 -----
48
49
50
51

52 Uncertainties existed in modeling parameters would lead to varied system costs. As shown in
53 **Figure 10**, when $\lambda = 1$, system cost would increase by \$ $[0.18, 0.19] \times 10^{12}$ under S1 compared to
54 that under S2, while $[194.9, 203.4] \times 10^6 \text{ m}^3$ of water were saved. It is mainly because a high
55 water-resources availability violation-risk equivalent to an increased coal-fired power generation
56 reliability, leading to a low system cost; while renewable-energy based and extra electricity from
57
58
59
60

1
2
3
4 other power grids become of indispensability in response to a low water-resources availability
5 violation-risk, thus resulting in a high system cost. Moreover, different λ levels correspond to
6 decision makers' different necessity degrees of the system cost, thus leading to changed system
7 costs. For instance, the system cost would vary from \$ $[2.99, 3.39] \times 10^{12}$ ($\lambda = 1$) to \$ $[3.02, 3.42]$
8 $\times 10^{12}$ ($\lambda = 0.65$) under S1. Thus, there exists a trade-off among system cost, risk-averse attitude
9 of decision-maker and water resources availability.
10
11
12
13
14

15 -----
16 Place Figure 10 here
17 -----
18
19
20
21

22 **5. Conclusions**

23
24
25
26 In this study, a CFIP method has been exploited through integration of CRP, IPP and FPP. CFIP
27 can both handle random, interval and interval information and reflect system joint-risk employed
28 to the WEN system of Henan Province, China. Solutions of various copulas associated with
29 different scenarios and necessity degrees are examined in the CFIP-WEN model. CFIP-WEN
30 model has advantages of: (a) disclosing interactions between water resources availability and
31 electricity consumption, and further illustrating their interactive effects on WEN system in
32 association with various scenarios and multiple uncertainties; (b) balancing the conflict among
33 economic objective, water resources shortage and electricity demand, as well as environmental
34 requirement.
35
36
37
38
39
40
41
42
43

44 Solutions for system cost, electricity-supply pattern, water-allocation pattern, and
45 pollutant-emission associated with various scenarios and multiple uncertainties have been
46 achieved. Results indicate that uncertainties and scenarios employed to water resources,
47 electricity demand and other module parameters can generate prominent impacts on the WEN
48 system. Water resources can restrict the local electricity-generation pattern and then lead to the
49 change of system cost, and the system cost would increase by \$ $[0.18, 0.19] \times 10^{12}$ under S1
50 compared to that under S2, while around $[194.9, 203.4] \times 10^6$ m³ of water to be saved. Compared
51 to high water-availability scenario (S5), the share of electricity generated by the coal-fired power
52 can decrease by $[1.8, 2.6]$ % under low water-availability scenario (S1).
53
54
55
56
57
58
59
60
61

1
2
3
4
5
6 Although CFIP-WEN model has its effectiveness in reflecting the interactions between water
7 resources availability and electricity demand, and providing optimal solutions for WEN
8 management, it neglects the hierarchically conflicting objectives in the WEN system (e.g., the
9 objectives of minimum system cost and minimum water consumption), making the results
10 incapable of presenting the real-world WEN planning issues [40]. Besides, the constraints of the
11 CFIP-WEN model are limited to production-demand relationships, efficiency, storage and
12 operation levels of the electricity-conversion technologies should be further considered in order
13 to improve the robustness of the CFIP-WEN model [41]. In addition, energy- and water-supply
14 security especially for the water-stressed area is an international challenge, some more advanced
15 theory and robust model should be referenced to cope with such increasing energy demand and
16 water shortage [42].
17
18
19
20
21
22
23
24
25
26

27 **Acknowledgements**

28
29
30
31 This research was supported by the National Natural Science Foundation of China (51909239),
32 the Key Research Project of Henan Higher Education Institution (20A570001) and the
33 Postdoctoral Foundation of Henan Province (1901008). The authors are grateful to the editors
34 and the anonymous reviewers for their insightful comments and suggestions.
35
36
37
38
39
40
41
42
43
44
45
46
47
48
49
50
51
52
53
54
55
56
57
58
59
60
61
62
63
64
65

References

- [1] Khalkhali M, Westphal K, Mo WW. The water-energy nexus at water supply and its implications on the integrated water and energy management. *Science of The Total Environment* 2018;636:1257-1267.
- [2] Gjorgiev B, Sansavini G. Water-energy nexus: Impact on electrical energy conversion and mitigation by smart water resources management. *Energy Conversion and Management* 2017;148:1114-1126.
- [3] Fan JL, Kong LS, Wang H, Zhang X. A water-energy nexus review from the perspective of urban metabolism. *Ecological Modelling* 2019;392:128-136.
- [4] Lv J, Li YP, Shan BG, Jin SW, Suo C. Planning energy-water nexus system under multiple uncertainties - A case study of Hebei province. *Applied Energy* 2018;229:389-403.
- [5] Li N, Chen WY. Energy-water nexus in China's energy bases: From the Paris agreement to the Well Below 2 Degrees target. *Energy* 2019;166:277-286.
- [6] Qin Y, Curmi E, Kopec GM, Allwood JM, Richards KS. China's energy-water nexus - assessment of the energy sector's compliance with the "3 Red Lines" industrial water policy. *Energy Policy* 2015;82:131-143.
- [7] Cai YP, Cai JY, Xu LY, Tan Q, Xu Q. Integrated risk analysis of water-energy nexus systems based on systems dynamics, orthogonal design and copula analysis. *Renewable and Sustainable Energy Reviews* 2019;99:125-137.
- [8] Al-Ansari T, Korre A, Nie ZG, Shah N. Development of a life cycle assessment tool for the assessment of food production systems within the energy, water and food nexus. *Sustainable Production and Consumption* 2015;2:52-66.
- [9] Wang SG, Chen B. Energy-water nexus of urban agglomeration based on multiregional input-output tables and ecological network analysis: A case study of the Beijing-Tianjin-Hebei region. *Applied Energy* 2016;178:773-783.
- [10] Chhipi-Shrestha G, Hewage K, Sadiq R. Water-energy-carbon nexus modeling for urban water systems: system dynamics approach. *Journal of Water Resources Planning and Management* 2017;143:04017016.
- [11] Khan HF, Yang YCE, Xie H, Ringler C. A coupled modeling framework for sustainable watershed management in transboundary river basins. *Hydrology and Earth System Sciences*

- 2017;21:6275-6288.
- [12] Yu L, Li YP, Huang GH. A fuzzy-stochastic simulation-optimization model for planning electric power systems with considering peak-electricity demand: A case study of Qingdao, China. *Energy* 2016;98:190-203.
- [13] Cai XM, Wallington K, Shafiee-Jood M, Marston L. Understanding and managing the food-energy-water nexus - opportunities for water resources research. *Advances in Water Resources* 2018;111:259-273.
- [14] Zhang XD, Vesselinov VV. Energy-water nexus: Balancing the tradeoffs between two-level decision makers. *Applied Energy* 2016;183:77-87.
- [15] Bieber N, Ker JH, Wang XN, Triantafyllidis C, van Dam KH, Koppelaar RHEM, Shah N. Sustainable planning of the energy-water-food nexus using decision making tools. *Energy Policy* 2018;113:584-607.
- [16] Li M, Fu Q, Singh VP, Liu D. An interval multi-objective programming model for irrigation water allocation under uncertainty. *Agricultural Water Management* 2018;196:24-36.
- [17] Feng MY, Liu P, Li ZJ, Zhang JW, Liu DD, Xiong LH. Modeling the nexus across water supply, power generation and environment systems using the system dynamics approach: Hehuang Region, China. *Journal of Hydrology* 2016;543, Part B:344-359.
- [18] Pahl-Wostl C. Governance of the water-energy-food security nexus: A multi-level coordination challenge. *Environmental Science & Policy* 2019;92:356-367.
- [19] Thiede S, Schönemann M, Kurle D, Herrmann C. Multi-level simulation in manufacturing companies: The water-energy nexus case. *Journal of Cleaner Production* 2016;139:1118-1127.
- [20] Su JX, Furman E. Multiple risk factor dependence structures: Copulas and related properties. *Insurance: Mathematics and Economics* 2017;74:109-121.
- [21] Nelsen RB. *An introduction to copulas*. New York: Springer, 1999. ISBN 0-387-98623-5.
- [22] Charnes A, Cooper WW. Response to decision problems under risk and chance constrained programming: dilemmas in the transitions. *Management Science* 1983;29(6):750-753.
- [23] Chen F, Huang GH, Fan YR, Chen JP. A copula-based fuzzy chance-constrained programming model and its application to electric power generation systems planning. *Applied Energy* 2017;187:291-309.
- [24] Simic V, Dabic-Ostojic S. Interval-parameter chance-constrained programming model for

- 1
2
3
4 uncertainty-based decision making in tire retreading industry. *Journal of Cleaner Production*
5 2017;167:1490-1498.
6
7
8 [25] Li YP, Nie S, Huang CZ, McBean EA, Fan YR, Huang GH. An integrated risk analysis
9 method for planning water resource systems to support sustainable development of an arid
10 region. *Journal of Environmental Informatics*. 2017;29(1):1-15.
11
12 [26] Yu L, Li YP, Huang GH. Planning municipal-scale mixed energy system for stimulating
13 renewable energy under multiple uncertainties-The City of Qingdao in Shandong Province,
14 China. *Energy* 2019;166:1120-1133.
15
16 [27] Inuiguchi M, Ramik J. Possibilistic linear programming: a brief review of fuzzy
17 mathematical programming and a comparison stochastic programming in portfolio selection
18 problem. *Fuzzy Sets and Systems* 2000;111:3-28.
19
20 [28] Zhou Y, Li YP, Huang GH, Zhou Y. A robust approach for planning electric power systems
21 associated with environmental policy analysis. *Electric Power Systems Research*
22 2013;95:99-111.
23
24 [29] Huang GH, Baetz BW, Patry GG. A grey linear programming approach for municipal solid
25 waste management planning under uncertainty. *Civil Engineering Systems*
26 1992;9(4):319-335.
27
28 [30] Yin YY, Tang QH, Liu XC, Zhang XJ. Water scarcity under various socio-economic
29 pathways and its potential effects on food production in the Yellow River basin. *Hydrology*
30 and *Earth System Sciences* 2017;21:791-804.
31
32 [31] Li YP, Huang GH. Electric-power systems planning and greenhouse-gas emission
33 management under uncertainty. *Energy Conversion and Management* 2012;57:173-182.
34
35 [32] Liu J, Li YP, Huang GH, Suo C, Yin S. An interval fuzzy-stochastic chance-constrained
36 programming based energy-water nexus model for planning electric power systems. *Energies*
37 2017;10(11):1914.
38
39 [33] Yu L, Li YP, Huang GH, Fan YR, Nie S. A copula-based flexible-stochastic programming
40 method for planning regional energy system under multiple uncertainties: A case study of the
41 urban agglomeration of Beijing and Tianjin. *Applied Energy* 2018;210:60-74.
42
43 [34] Zhu Y, Li YP, Huang GH. Planning carbon emission trading for Beijing's electric power
44 systems under dual uncertainties. *Renewable and Sustainable Energy Reviews*
45 2013;23:113-128.
46
47
48
49
50
51
52
53
54
55
56
57
58
59
60
61
62
63
64
65

- 1
2
3
4 [35] Jin SW, Li YP, Xu LP. Development of an integrated model for energy systems planning
5 and carbon dioxide mitigation under uncertainty - Tradeoffs between two-level decision
6 makers. *Environmental Research* 2018;164:367-378.
7
8
9
10 [36] The 13th Five-year Energy Development Plan of Henan Province. The People's Government
11 of Henan Province; 2017. Available at: <
12 <https://www.henan.gov.cn/2017/05-24/270780.html> >.
13
14
15 [37] Henan Provincial Water Resources Bulletin. Henan Provincial Department of Water
16 Resources; 2017. Available at: <
17 <http://www.hnsl.gov.cn/gallery/8aa98d9267305a9a0167e45e76825bf5.html> >.
18
19
20 [38] Henan Statistical Yearbook. Henan Provincial Bureau of Statistics; 2018. Available at: <
21 <http://www.ha.stats.gov.cn/hntj/lib/tjnj/2018/indexch.htm> >.
22
23
24 [39] Yu L, Li QW, Jin SW, Chen C, Li YP, Fan YR, Zuo QT. A two-level based copula
25 interval-stochastic programming approach for planning energy-water nexus system
26 management under uncertainty. *Journal of Hydrology* HYDROL32062R1.
27
28
29
30 [40] Chen YZ, He L, Li J, Cheng X, Lu HW. An inexact bi-level simulation-optimization model
31 for conjunctive regional renewable energy planning and air pollution control for electric
32 power generation systems. *Applied Energy* 2016;183:969-983.
33
34
35 [41] Kuang JY, Zhang CH, Sun B. Stochastic dynamic solution for off-design operation
36 optimization of combined cooling, heating, and power systems with energy storage. *Applied*
37 *Thermal Engineering* 2019, accept. Available at <
38 <https://doi.org/10.1016/j.applthermaleng.2019.114356> >.
39
40
41
42 [42] Zhang C, Chen XX, Li Y, Ding W, Fu GT. Water-energy-food nexus: Concepts, questions
43 and methodologies. *Journal of Cleaner Production* 2018;195:625-639.
44
45
46
47
48
49
50
51
52
53
54
55
56
57
58
59
60
61
62
63
64
65

List of Table Captions

Table 1. Comparison of RMSE, MSE, AIC and BIC values for joint distributions using different copulas

List of Figure Captions

Figure 1. The study area

Figure 2. Total water resources and -use under different sectors (10^9 m^3)

Figure 3. Joint cumulative distribution functions for water resource availability and electricity consumption under different copulas [symbols “ u_1 , u_2 and $C(u_1, u_2)$ ” denote “water resource (10^8 m^3), electricity consumption (10^3 GWh) and joint cumulative distribution function”, respectively]

Figure 4. Electricity-supply scheme in the planning horizon (%)

Figure 5. Electricity-supply scheme in each period (%)

Figure 6. Expanded capacities of power conversion facilities (GW)

Figure 7. Imported electricity under different scenarios (10^3 GWh)

Figure 8. Water consumption (10^6 m^3)

Figure 9. Pollutant and CO_2 emissions

Figure 10. System costs ($\$ 10^{12}$)

Table 1. Comparison of RMSE, MSE, AIC and BIC values for joint distributions using different copulas

Copula family	RMSE	MSE	AIC	BIC
Clayton	0.1517	0.0230	-43.2646	-42.7797
Frank	0.0567	0.0032	-66.8662	-66.3813
Gumbel	0.1517	0.0230	-43.2646	-42.7797
Student's t	0.0624	0.0039	-62.5922	-61.6224

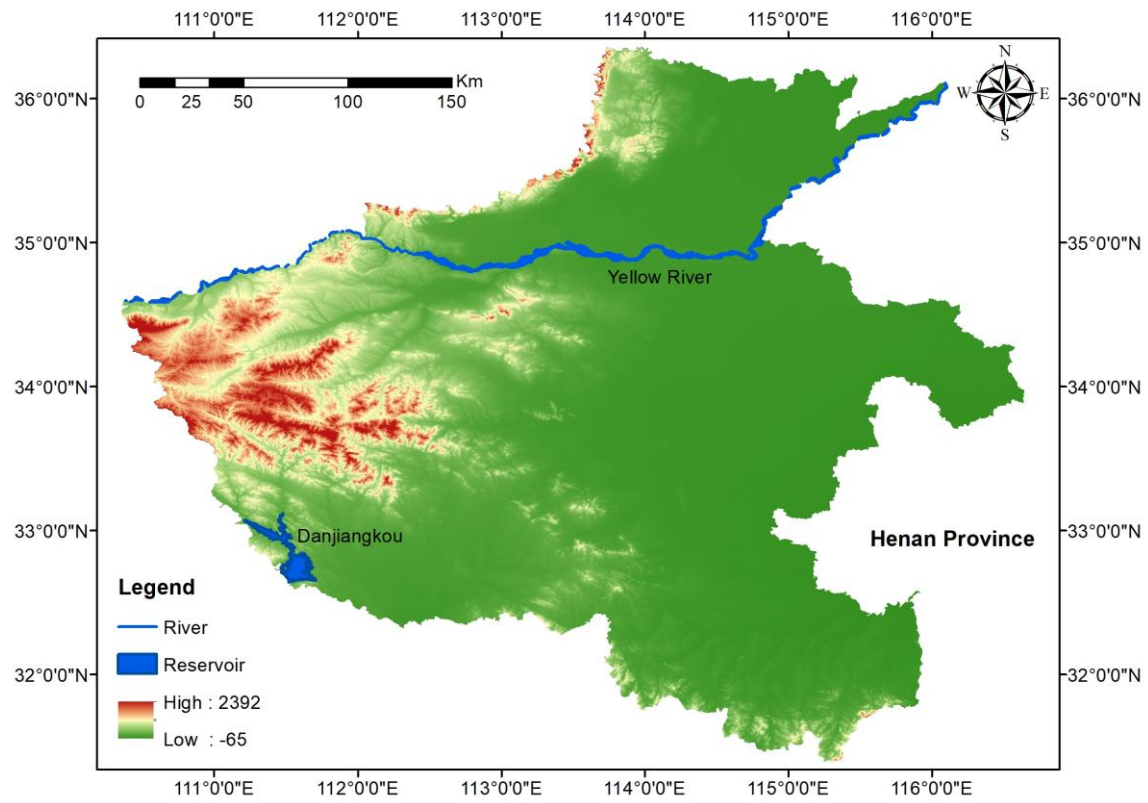


Figure 1. The study area

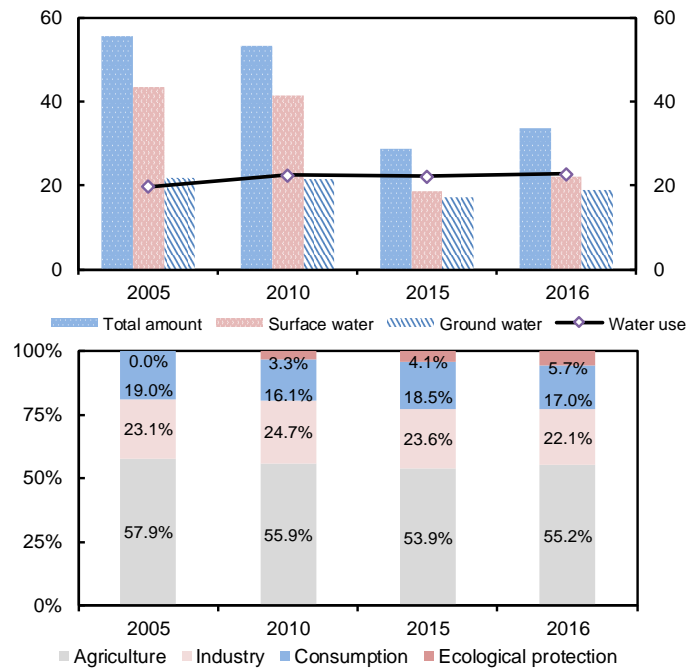


Figure 2. Total water resources and -use under different sectors (10⁹ m³)

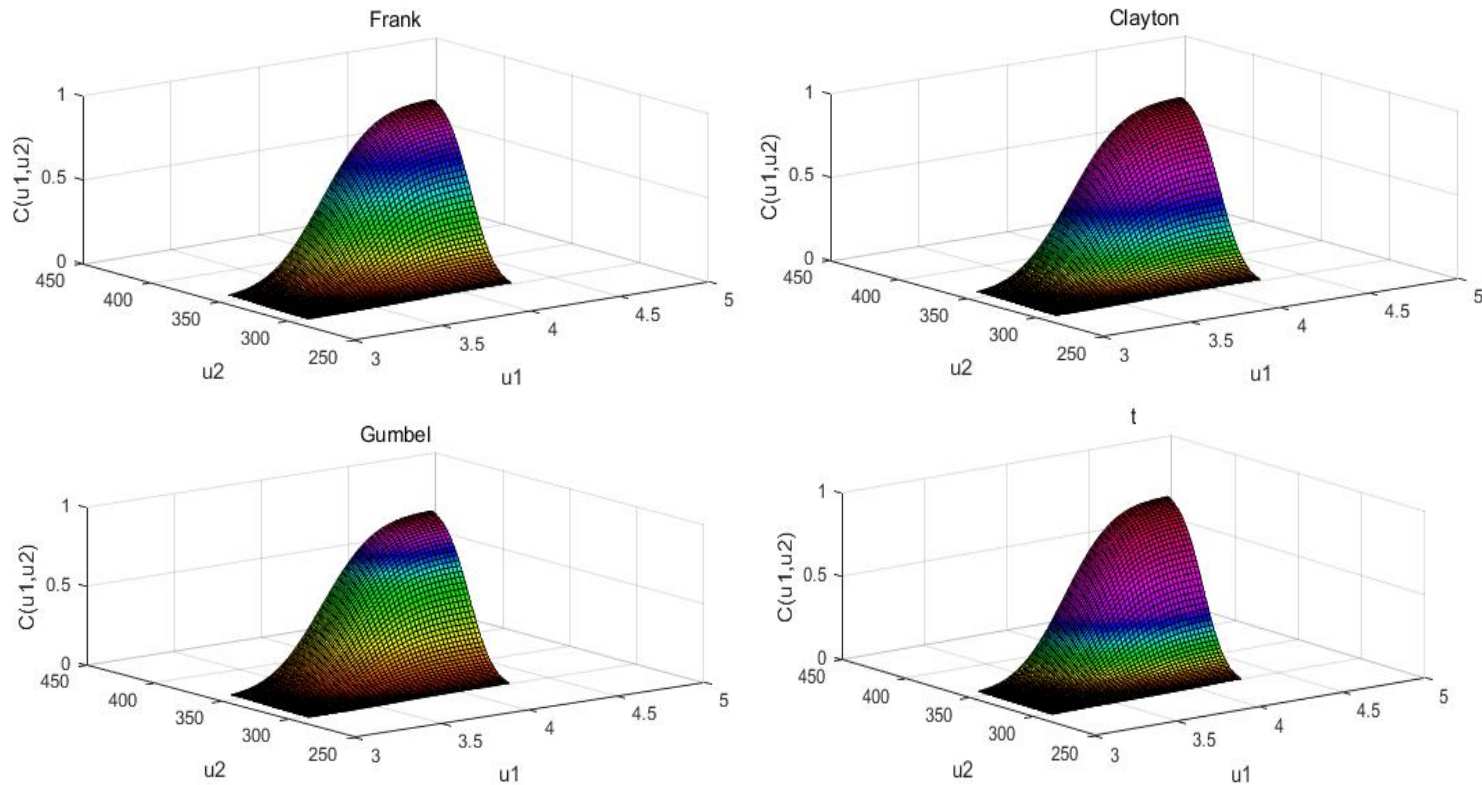


Figure 3. Joint cumulative distribution functions for water resource availability and electricity consumption under different copulas [symbols “ u_1 , u_2 and $C(u_1, u_2)$ ” denote “water resource (10^8 m^3), electricity consumption (10^3 GWh) and joint cumulative distribution function”, respectively]

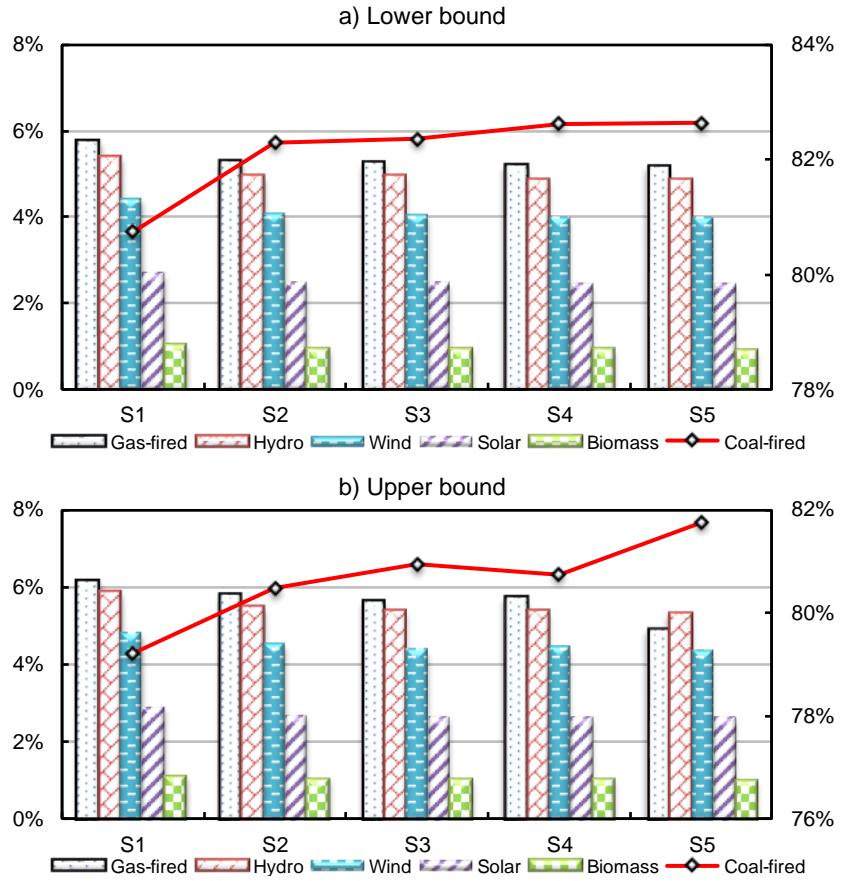
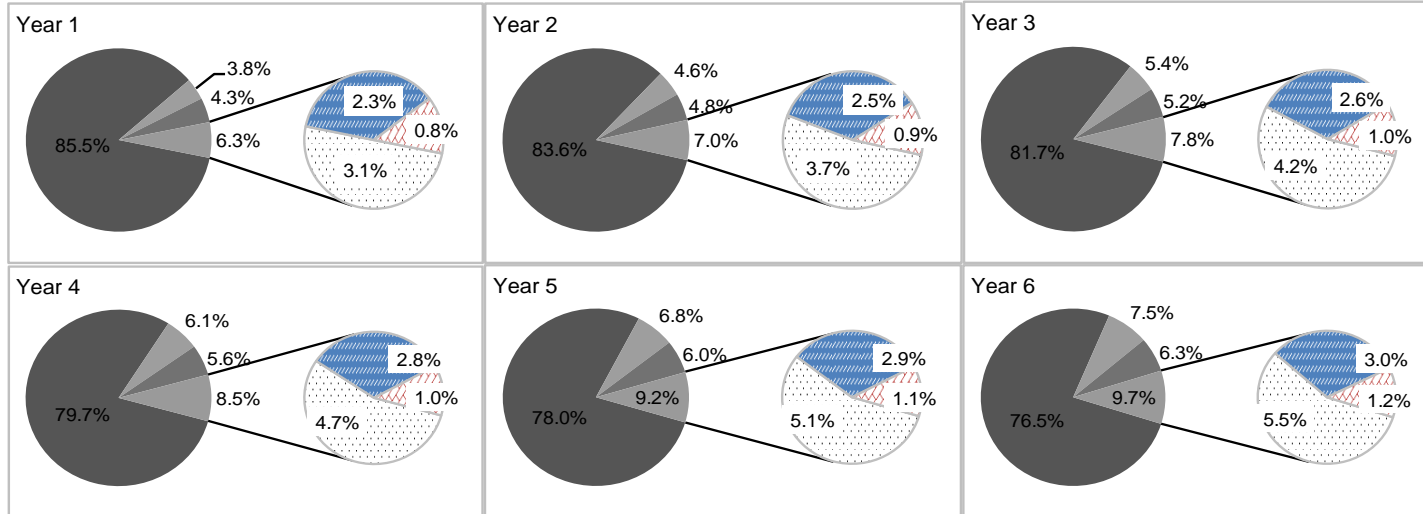
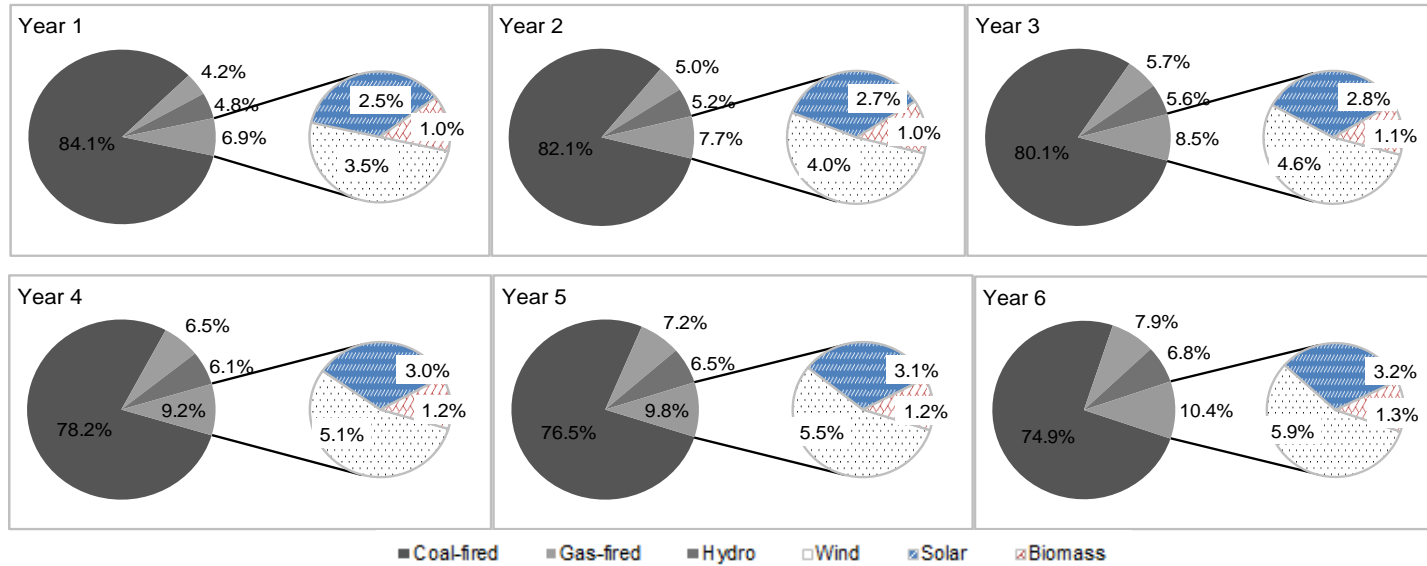


Figure 4. Electricity-supply scheme in the planning horizon (%)

a) Lower bound



b) Upper bound



■ Coal-fired ■ Gas-fired ■ Hydro □ Wind ■ Solar ■ Biomass

Figure 5. Electricity-supply scheme in each period (%)

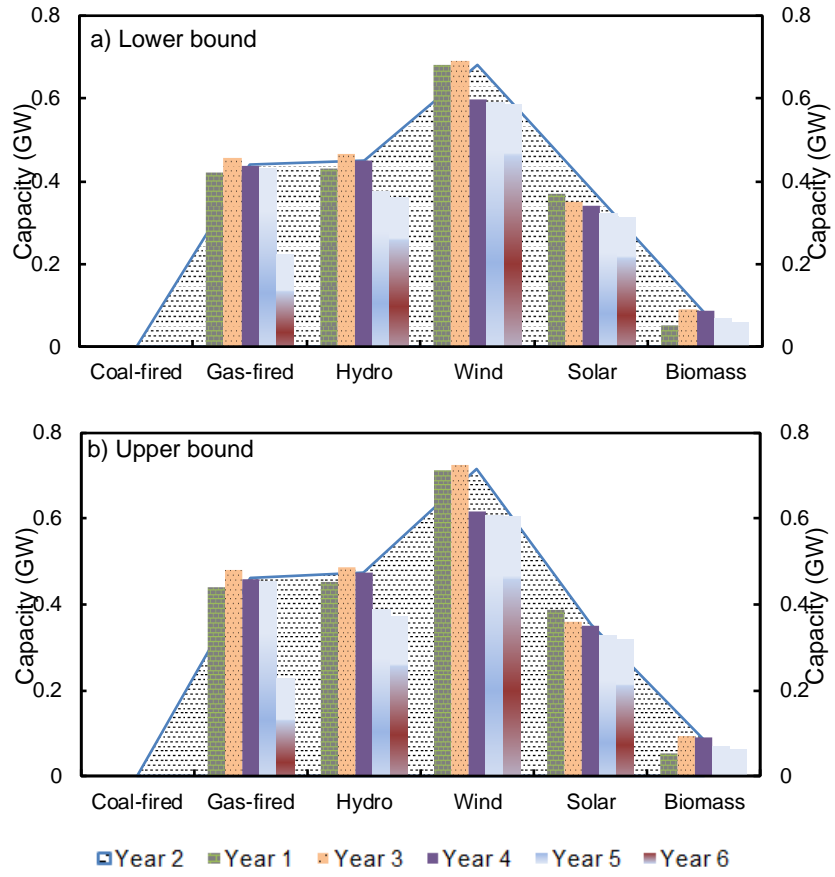


Figure 6. Expanded capacities of power conversion facilities (GW)

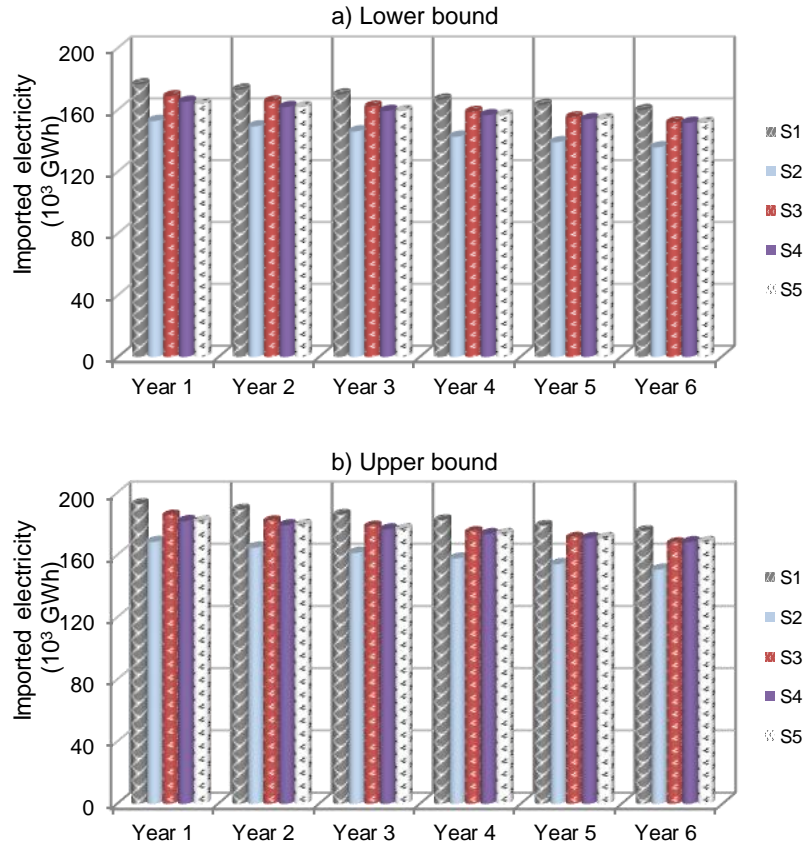


Figure 7. Imported electricity under different scenarios (10^3 GWh)

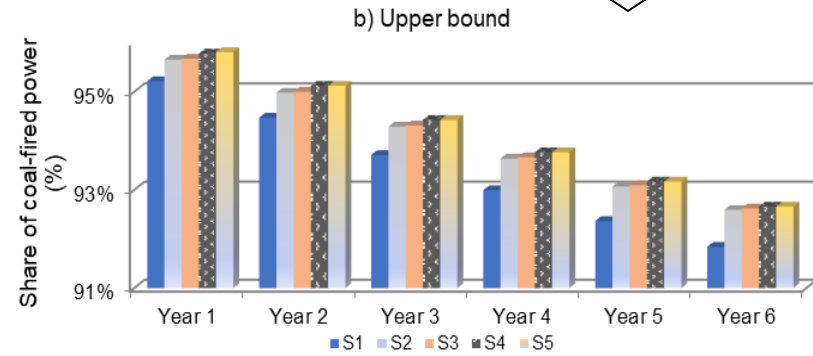
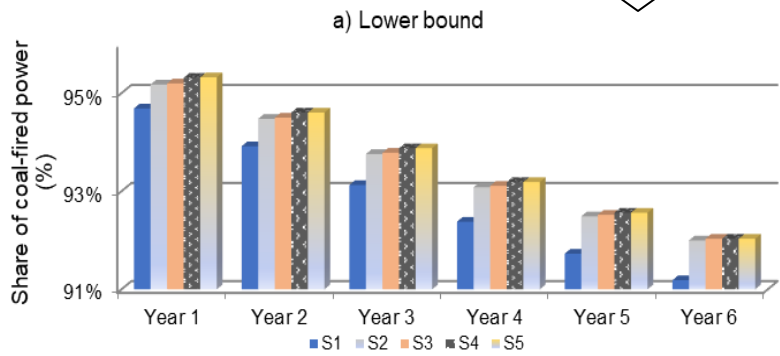
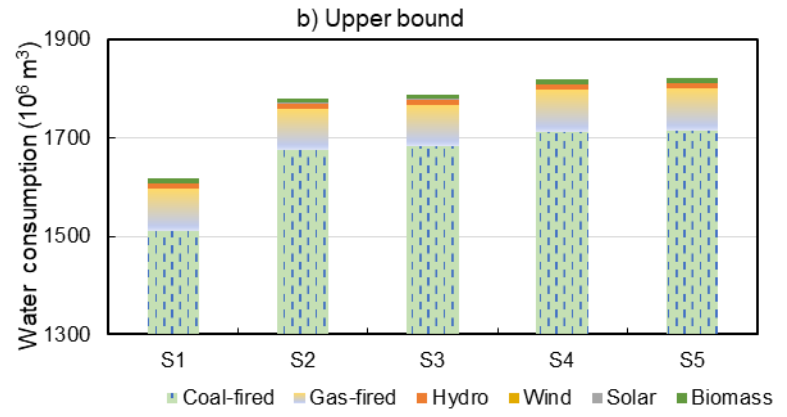
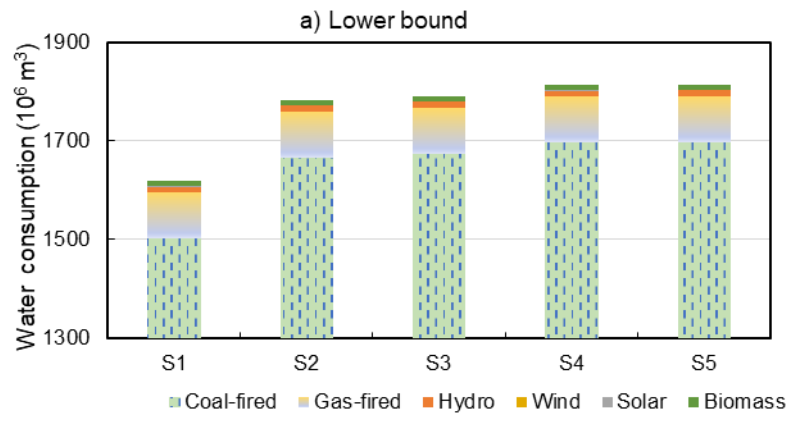


Figure 8. Water consumption (10⁶ m³)

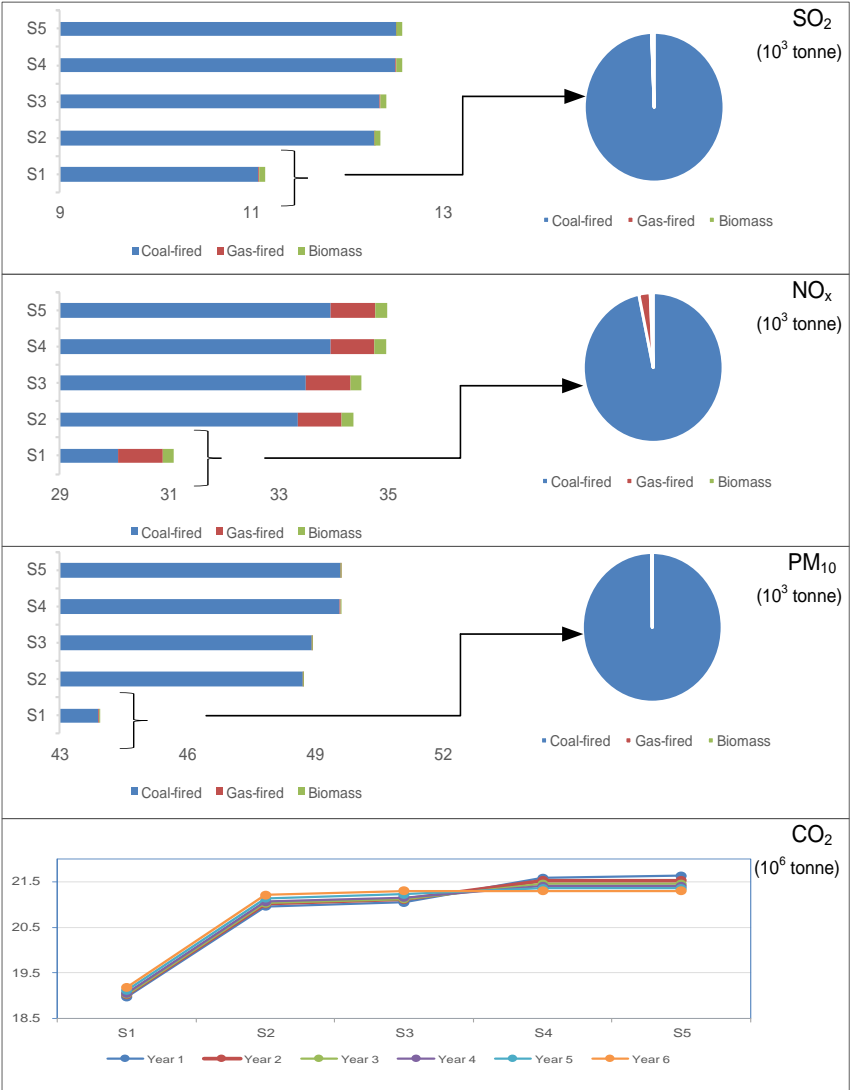


Figure 9. Pollutant and CO₂ emissions

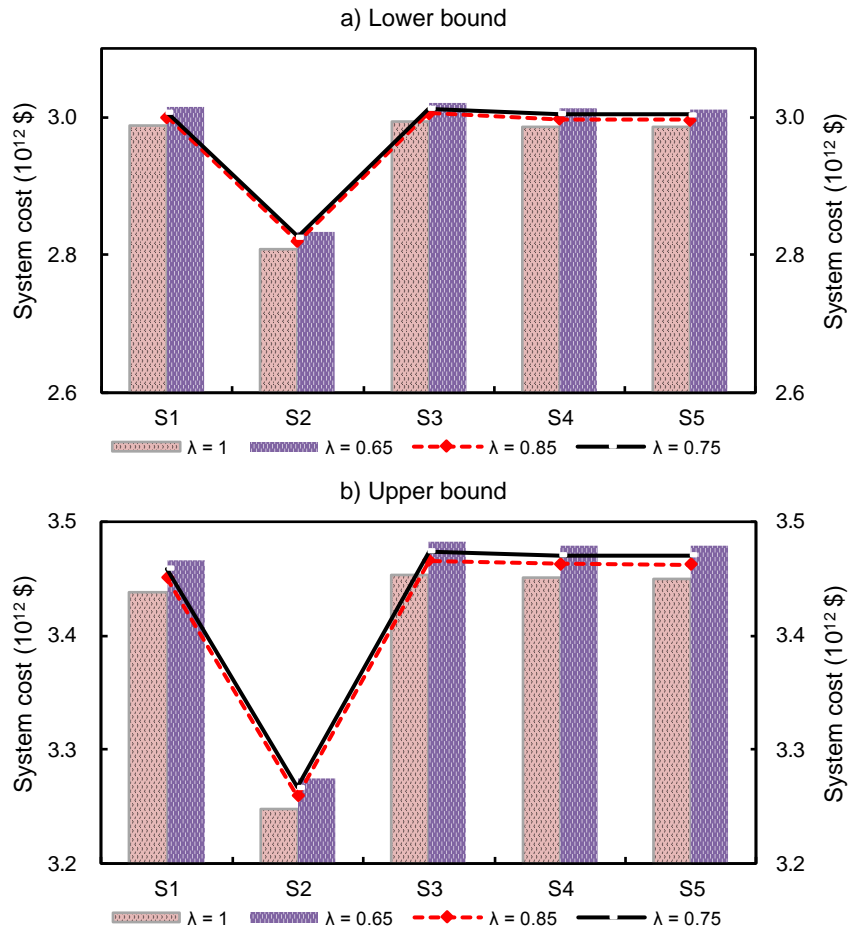


Figure 10. System costs ($\$ 10^{12}$)

Abbreviation:

ABM	agent-based modelling
AIC	Akaike information criterion
BIC	Bayesian information criteria
CFIP	copula-based fuzzy interval-random programming
CO ₂	carbon dioxide
CRP	copula-based random programming
ENA	ecological network analysis
FPP	fuzzy possibilistic programming
GDP	gross domestic product
IESM	integrated energy system modelling
IO	input-output
IPP	interval-parameter programming
LCA	life cycle assessment
MOP	multi-objective programming
MSE	mean square error
NO _x	nitrogen oxides
PM ₁₀	particulate matter
RMSE	root mean square error
SDM	system dynamic modelling
SO ₂	sulfur dioxide
WEFE	water-energy-food-environment
WEN	water-energy nexus

Explanations for system coefficients:

E^{\pm}	system cost (\$ 10^{12})
k	electricity-conversion technology, including coal, gas, hydro, wind, solar and biomass power
q	pollutant type, including SO_2 , NO_x and PM_{10}
t	time periods (1-6)
$\delta_{k,t}^{\pm}$	CO_2 -emission coefficient (tonne/GWh)
η_t^{\pm}	transmission loss (%)
$AMR_{k,t,q}^{\pm}$	pollutant-emission coefficients (tonne/GWh)
$AR_{k,t}^{\pm}$	available energy resources (TJ)
$BW_{k,t}^{\pm}$	boiler water for electricity-conversion technology (10^6 m ³ /TJ)
$CE_{t,q}^{\pm}$	cost for pollutant emission (10^3 \$/GW)
$CP_{t,q}^{\pm}$	cost for pollutant control (10^3 \$/GWh)
$CU_{k,t}^{\pm}$	cost for electricity transmission (10^3 \$/GWh)
$CW_{k,t}^{\pm}$	cooling water for electricity-conversion technology (10^6 m ³ /TJ)
$CBW_{k,t}^{\pm}$	cost for boiler water (10^3 \$/m ³)
CCA_t^{\pm}	Carbon complement efficiency (%)
$CCW_{k,t}^{\pm}$	cost for cooling water (10^3 \$/m ³)
$CDW_{k,t}^{\pm}$	cost for desulfurization water (10^3 \$/m ³)
$COW_{k,t}^{\pm}$	cost for other water (10^3 \$/m ³)
$DW_{k,t}^{\pm}$	desulfurization water for electricity-conversion technology (10^6 m ³ /TJ)
$EC_{k,t}^{\pm}$	expanded capacity for electricity-conversion technologies (GW)
EDB_t^{\pm}	electricity demand (GWh)
$EGA_{k,t}^{\pm}$	electricity-generation amounts (GWh)
$ES_{t,q}^{\pm}$	allowed pollutant discharge amounts (10^3 tonne)
ESC_t^{\pm}	allowed CO_2 discharge amount (10^6 tonne)
$FE_{k,t}^{\pm}$	energy consumption rate (TJ/GWh)
$FEC_{k,t}^{\pm}$	fixed cost for electricity expansion (10^3 \$/GW)
$FGC_{k,t}^{\pm}$	fixed maintenance cost for generating electricity (10^6 \$/GW)
$MC_{k,t}^{\pm}$	maximum expanded capacity for electricity-conversion technologies (GW)
$OW_{k,t}^{\pm}$	other type water for electricity-conversion technology (10^6 m ³ /TJ)
PE_t^{\pm}	imported electricity amounts (GWh)
$PEC_{k,t}^{\pm}$	purchasing electricity resource cost (10^3 \$/TJ)

$PEJ_{\sim t}^{\pm}$	importing electricity cost (10^3 \$/GWh)
$RC_{k,t}^{\pm}$	residual capacity for electricity-conversion technologies (GW)
$ST_{k,t}^{\pm}$	service time of electricity-conversion technologies (h)
$SU_{\sim k,t}^{\pm}$	financial subsidy (10^3 \$/GWh)
TAW_t^{\pm}	amount of available water resource (10^6 m ³)
$TE_{k,t}^{\pm}$	power-facilities conversion efficiency (%)
$VEC_{\sim k,t}^{\pm}$	variable cost for electricity expansion (10^3 \$/GW)
$VGC_{\sim k,t}^{\pm}$	variable cost for generating electricity (10^3 \$/GWh)
WDB_t^{\pm}	water resources demand (10^6 m ³)
$YC_{k,t}^{\pm}$	0-1 variables for electricity-generation
$ZL_{k,t}^{\pm}$	power consumption rate (%)

Declaration of Interest Statement

All of the authors have read and approved the paper and it has not been published previously nor is it being considered by any other peer-reviewed journal. No conflict of interest.