

# Appendix I

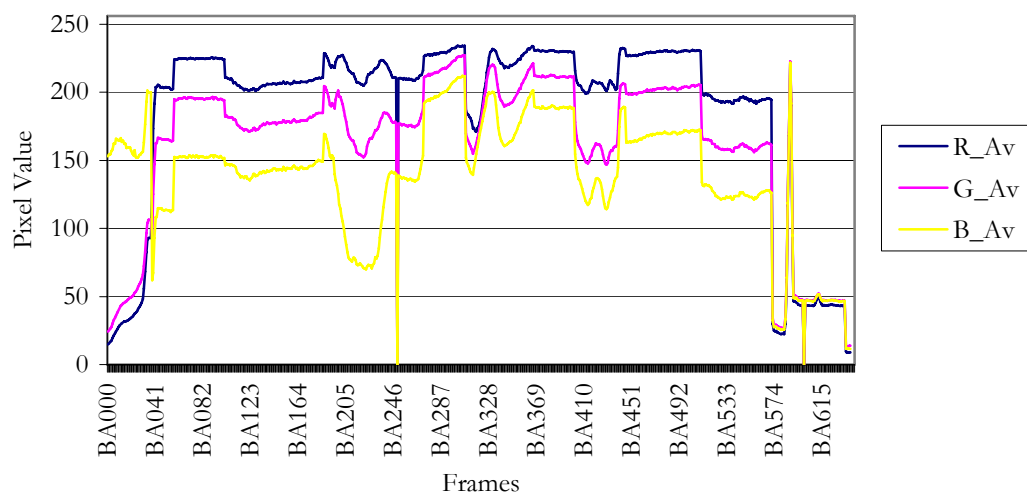
## Colour Detection



The value of pixels was used in our work to represent information concerning colour contrast detection in the original image frames. As pixels have a red, green and blue value that lies between 0 (black) and 255 (white), a change in the distribution of pixel values represents a change in the colours used in the video frame. A change over time can be observed by considering the variation in the average pixel value for each video frame. The following analysis of video frames shows the average pixel and standard deviation values, detected in the original image frames, across all videos.

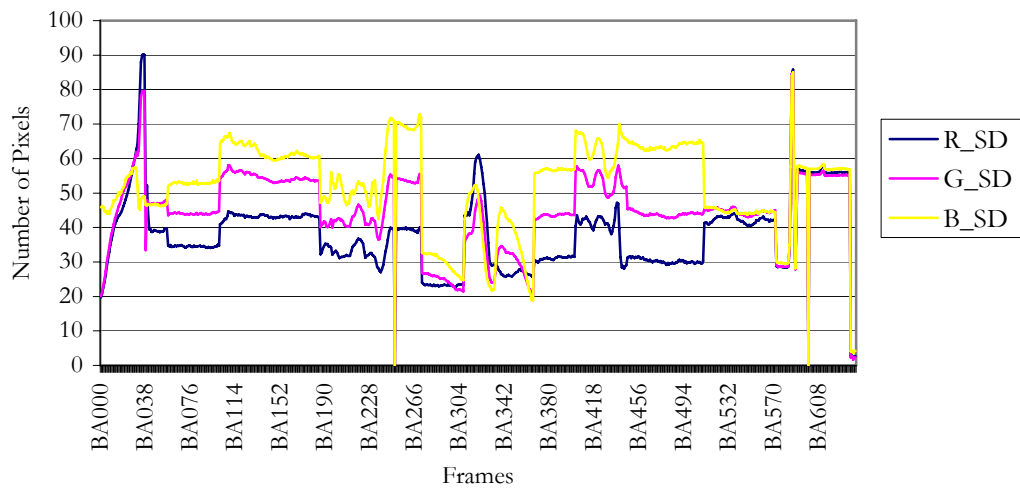
### BA – BATH COMMERCIAL

Original RGB Average Frame Values - BA



BA: The average original image frame pixel values – for all frames. (in pixel value)

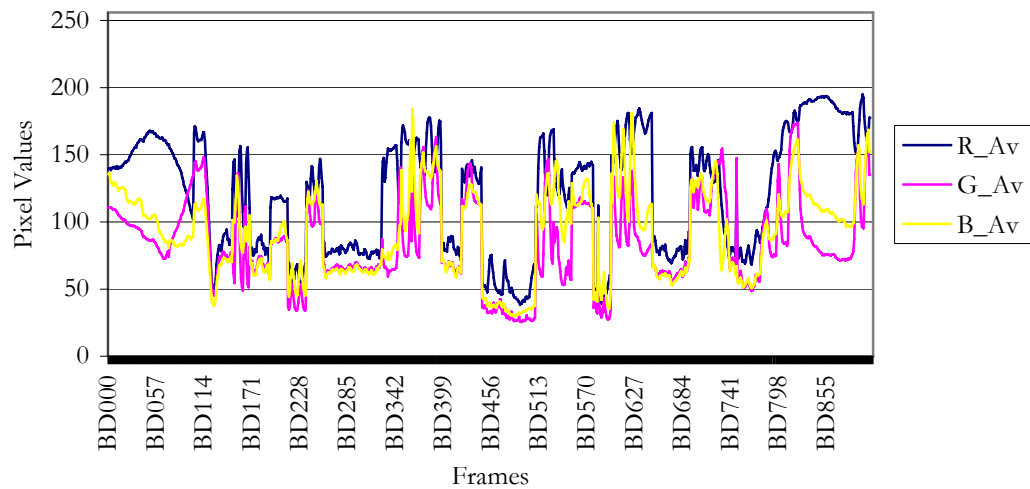
### Original RGB Frame Standard Deviation - BA



BA: The original image frame pixel standard deviation values – for all frame. (in pixel value)

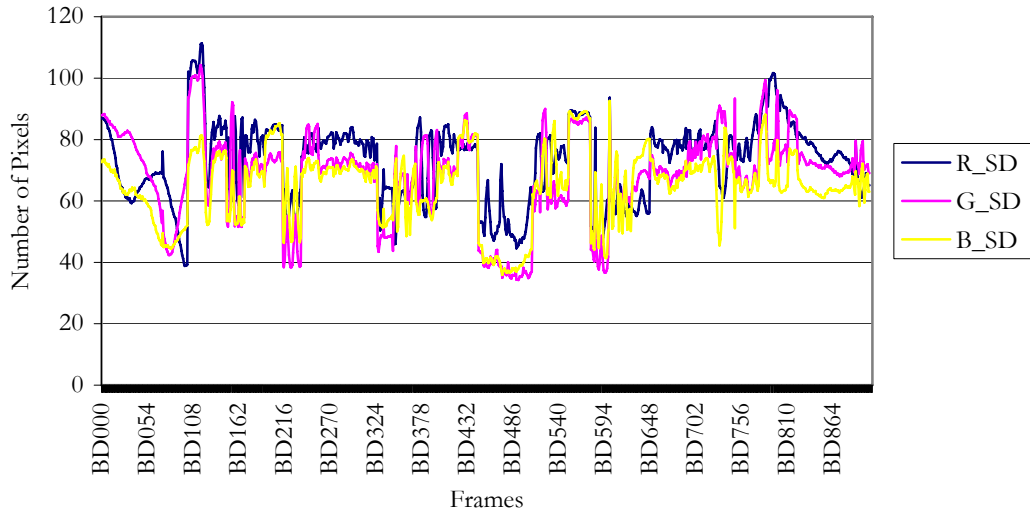
### BD – BAND

#### Original RGB Average Frame Values - BD



BD: The average original image frame pixel values – for all videos. (in pixel value)

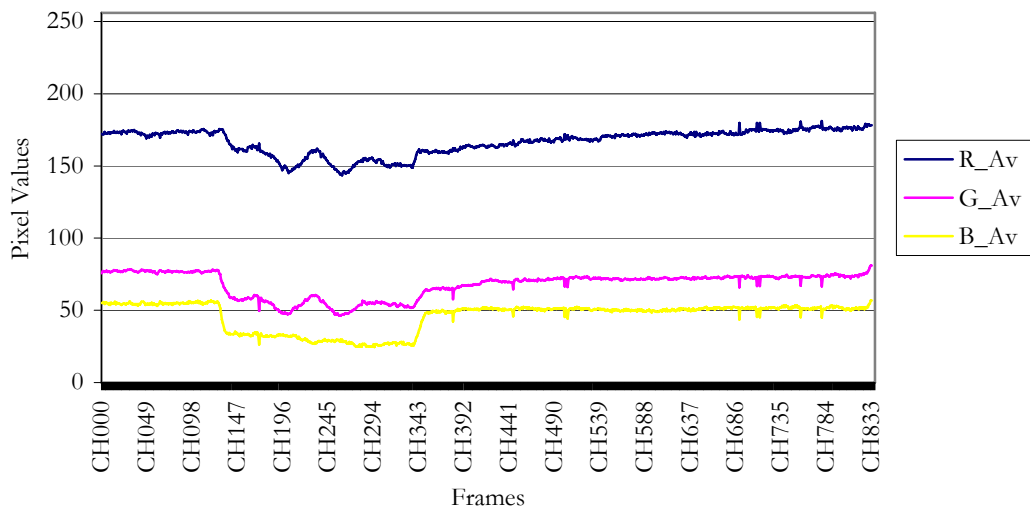
**Original RGB Frame Stand Deviation - BD**



BD: The original image frame pixel standard deviation values – for all frame. (in pixel value)

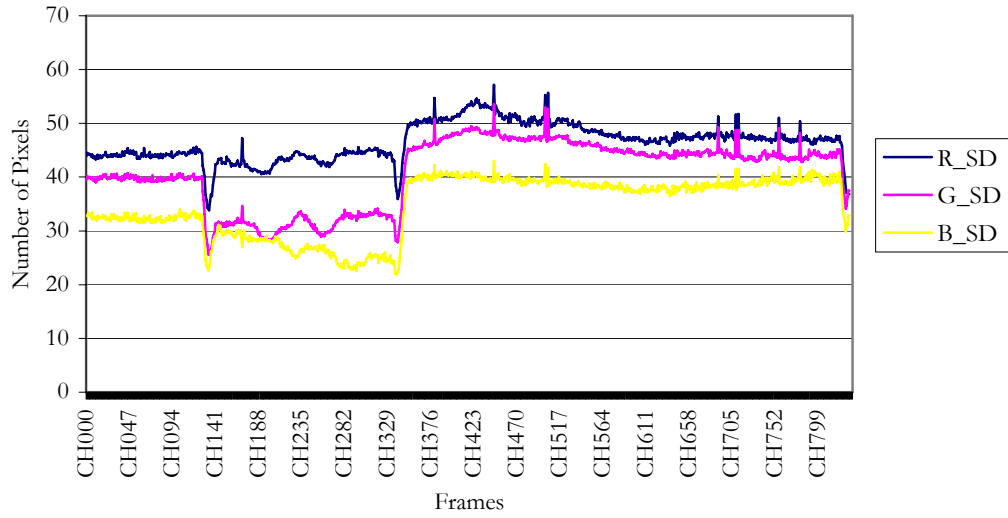
**CH – CHORUS**

**Original RGB Average Frame Values - CH**



CH: The average original image frame pixel values – for all videos. (in pixel value)

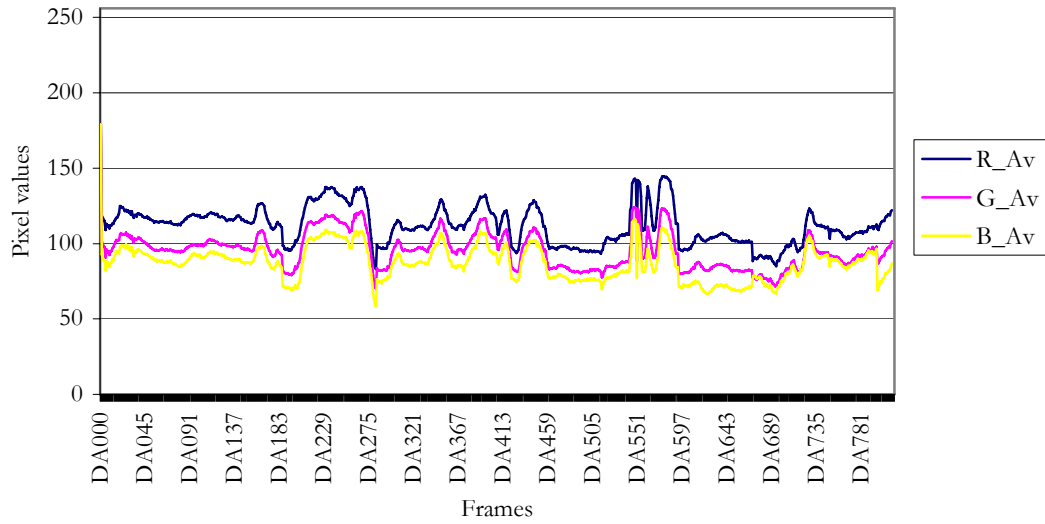
**Original RGB Frame Stand Deviation - CH**



CH: The original image frame pixel standard deviation values – for all frame. (in pixel value)

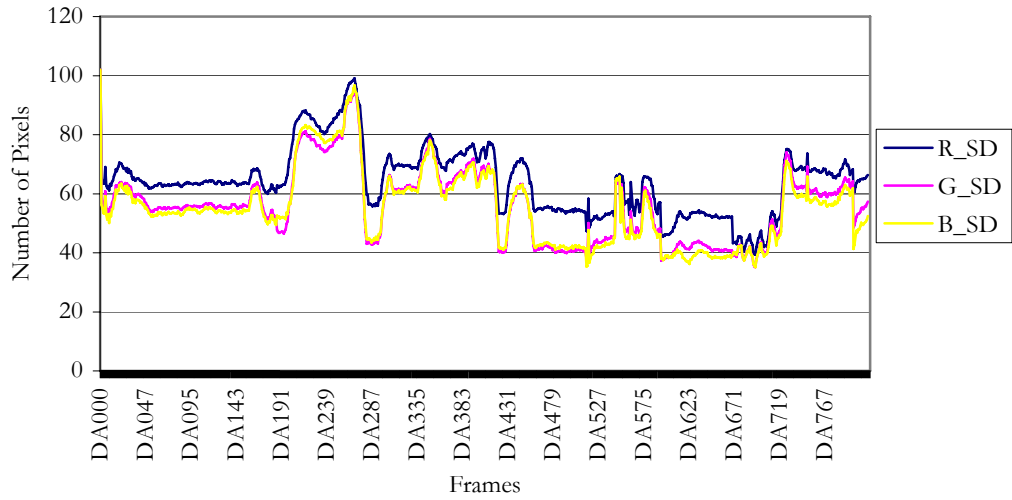
**DA – ANIMATION**

**Original RGB Average Frame Values - DA**



DA: The average original image frame pixel values – for all videos. (in pixel value)

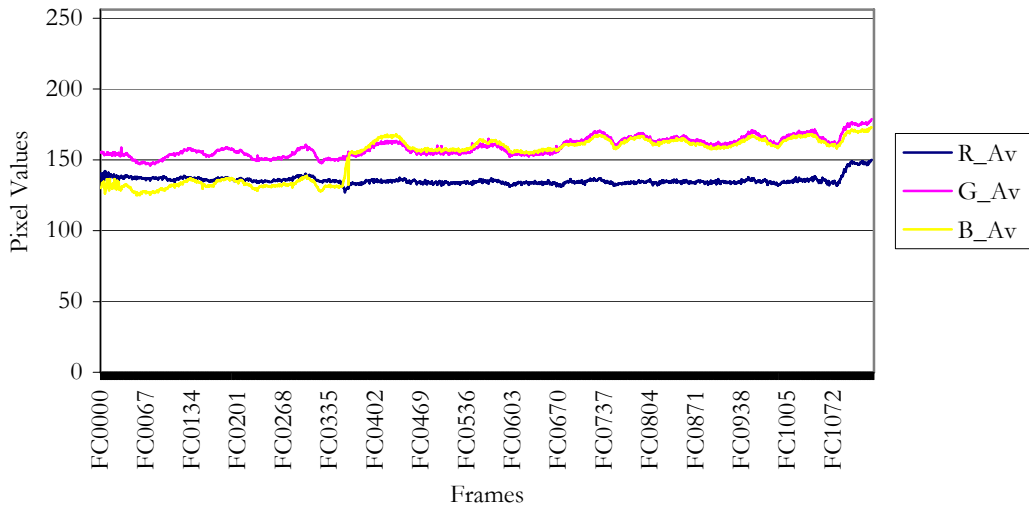
**Original RGB Frame Stand Deviation - DA**



DA: The original image frame pixel standard deviation values – for all frame. (in pixel value)

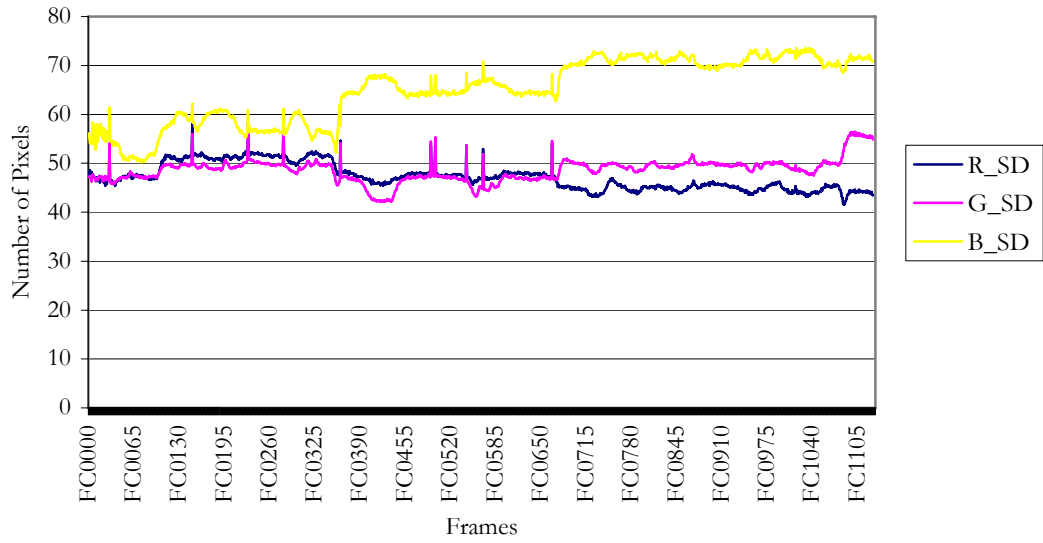
**FC – WEATHER FORECAST**

**Original RGB Average Frame Values - FC**



FC: The average original image frame pixel values – for all videos. (in pixel value)

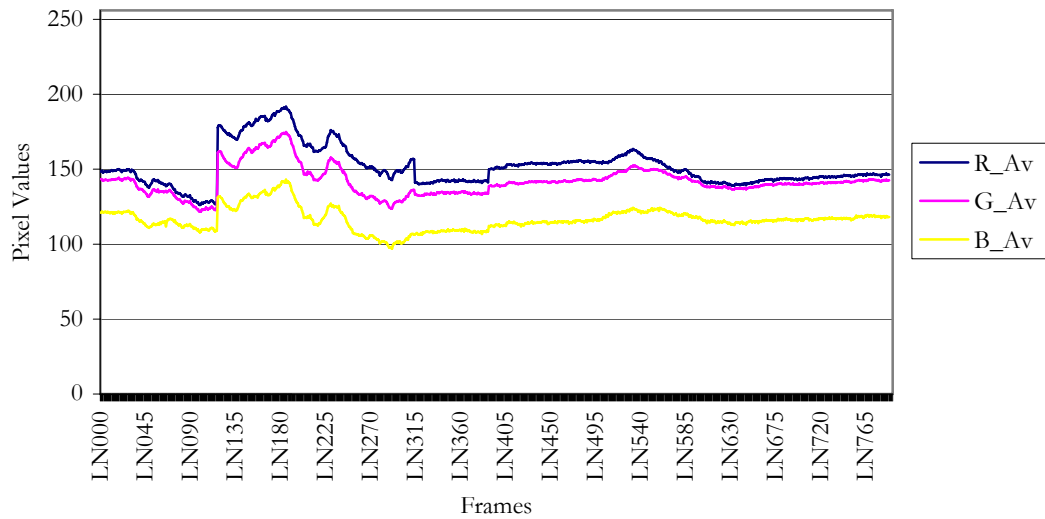
**Original RGB Frame Stand Deviation - FC**



FC: The original image frame pixel standard deviation values – for all frame. (in pixel value)

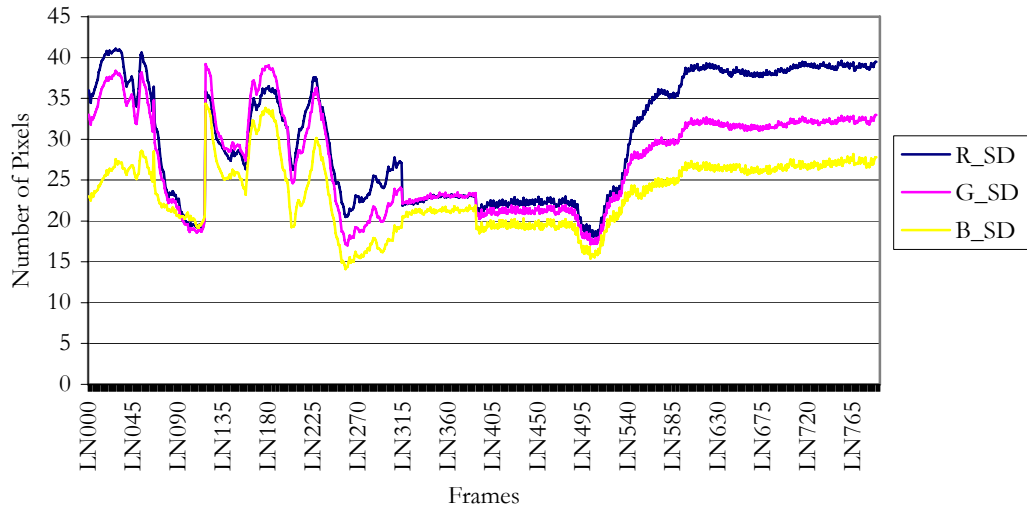
**LN – INDIAN LIONS**

**Original RGB Average Frame Values - LN**



LN: The average original image frame pixel values – for all videos. (in pixel value)

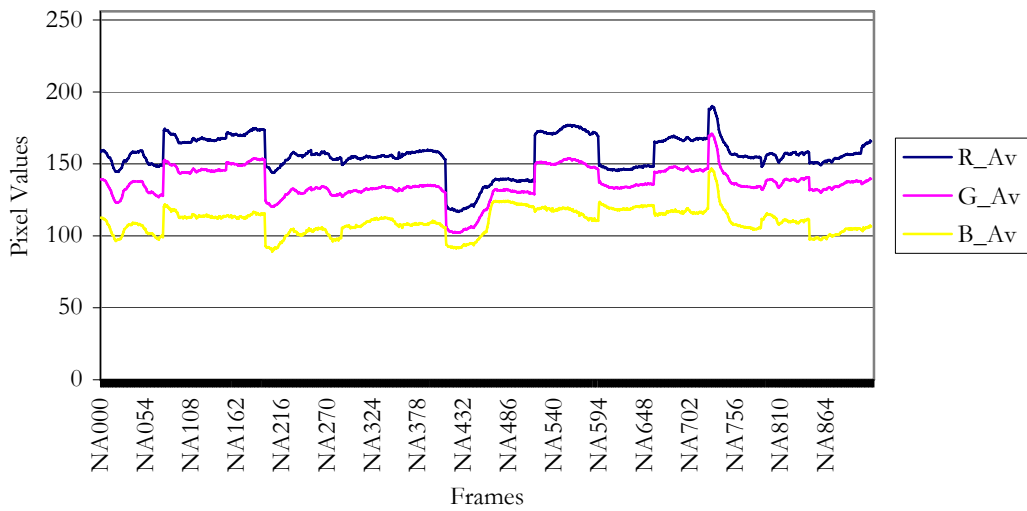
**Original RGB Frame Standard Deviation - LN**



LN: The original image frame pixel standard deviation values – for all frame. (in pixel value)

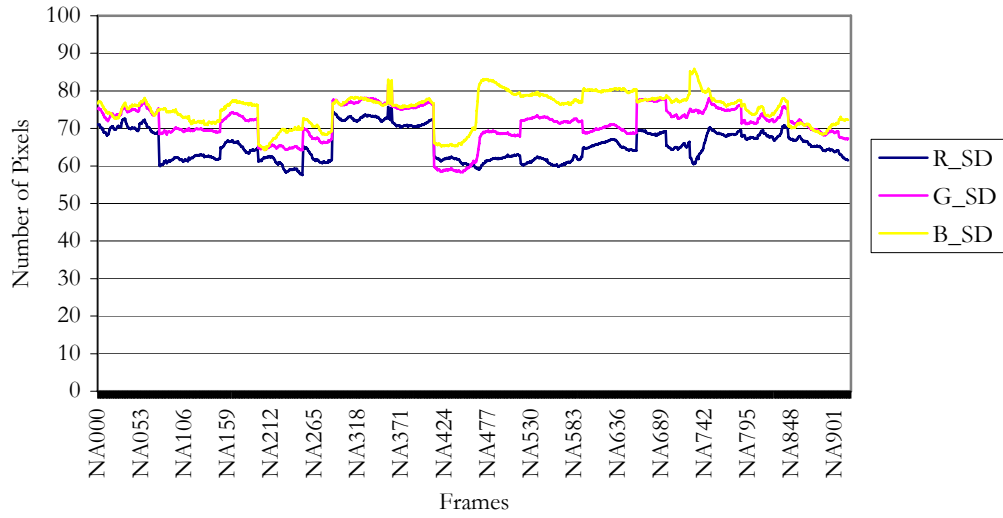
**NA – NATALIE’S POP VIDEO**

**Original RGB Average Frame Values - NA**



NA: The average original image frame pixel values – for all videos. (in pixel value)

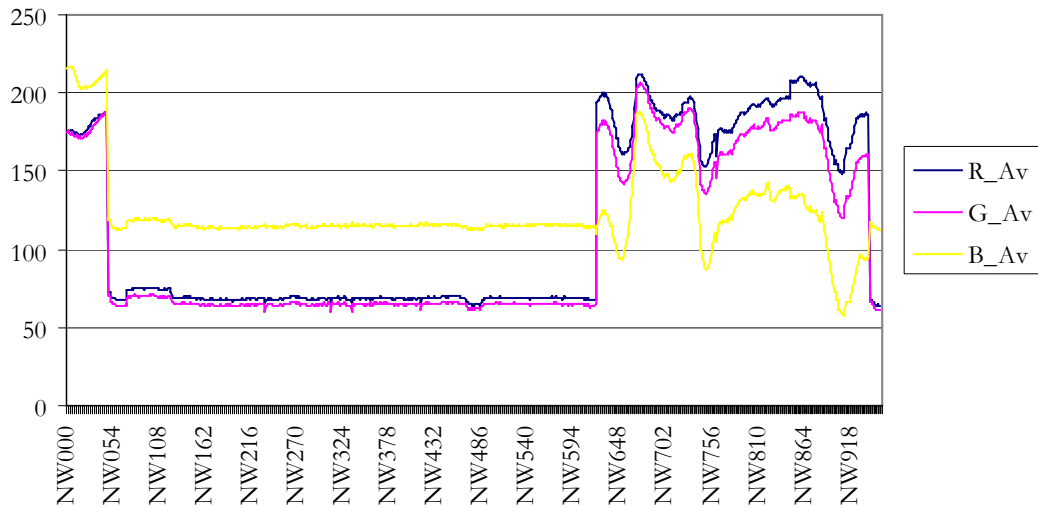
**Original RGB Frame Stand Deviation - NA**



NA: The original image frame pixel standard deviation values – for all frame. (in pixel value)

**NW – NEWS**

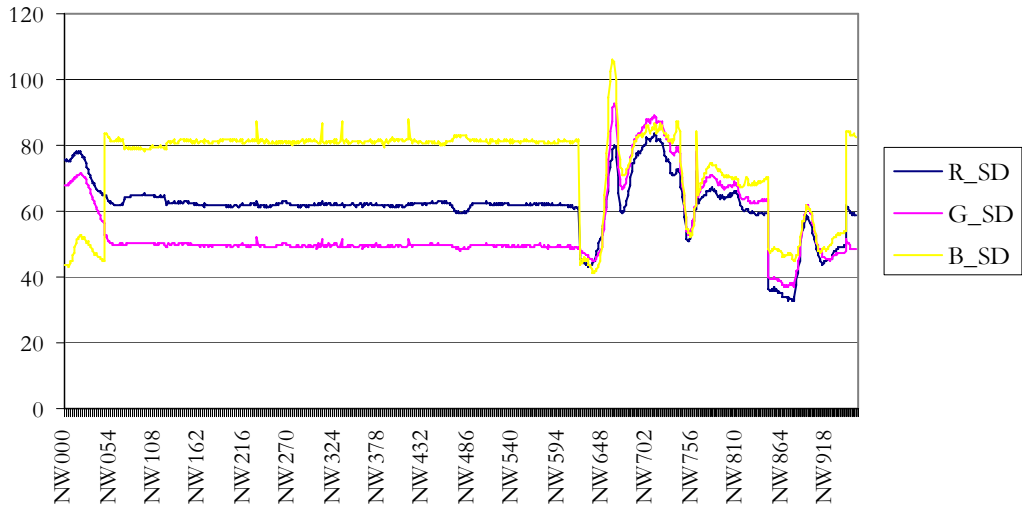
**Original RGB Average Frame Values - NW**



NW: The average original image frame pixel values – for all videos. (in pixel value)



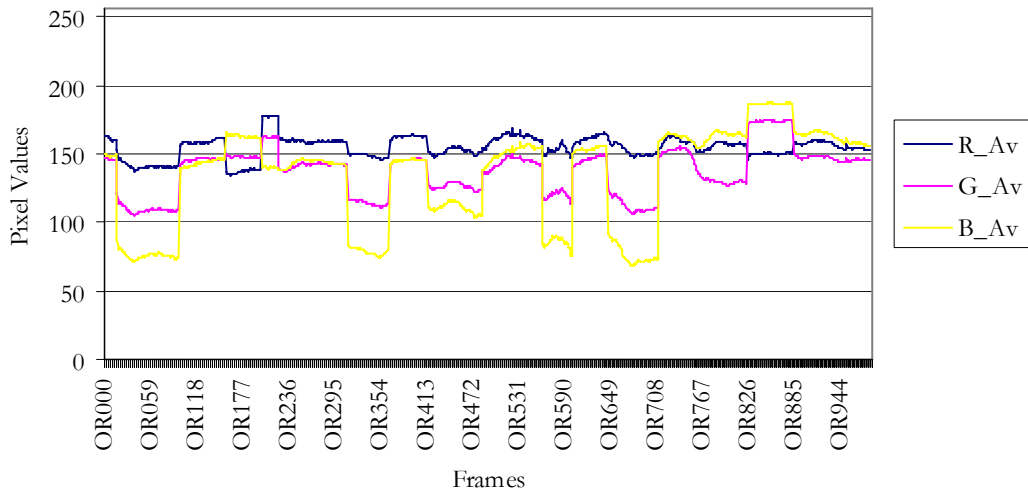
**Original RGB Frame Standard Deviation - NW**



NW: The original image frame pixel standard deviation values – for all frame. (in pixel value)

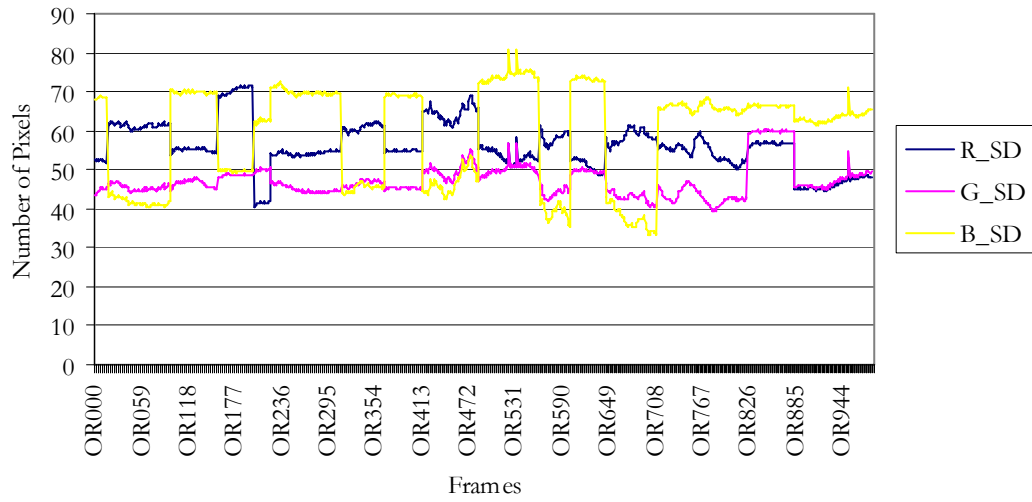
**OR – OREGANO COOKING**

**Original RGB Average Frame Values - OR**



OR: The average original image frame pixel values – for all videos. (in pixel value)

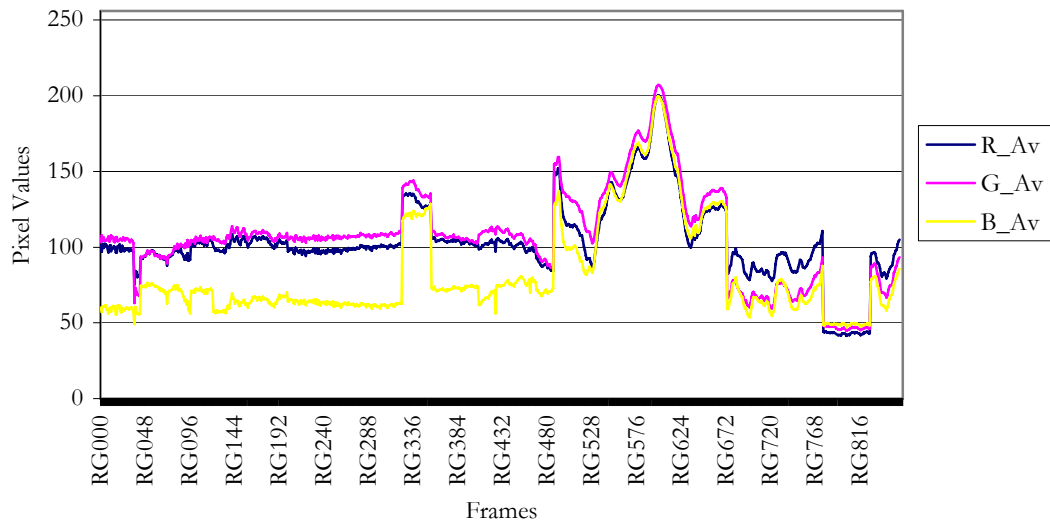
**Original RGB Frame Standard Deviation - OR**



OR: The original image frame pixel standard deviation values – for all frame. (in pixel value)

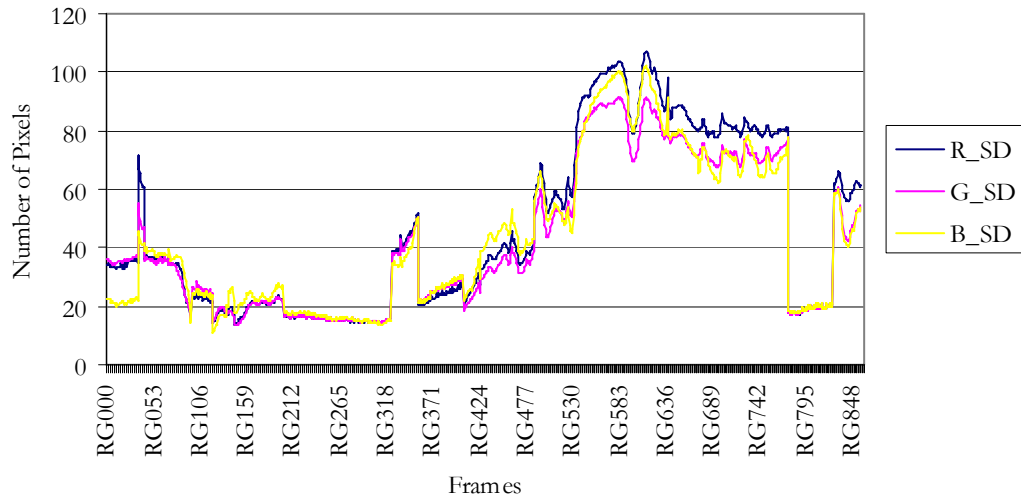
**RG – RUGBY**

**Original RGB Average Frame Values - RG**



RG: The average original image frame pixel values – for all videos. (in pixel value)

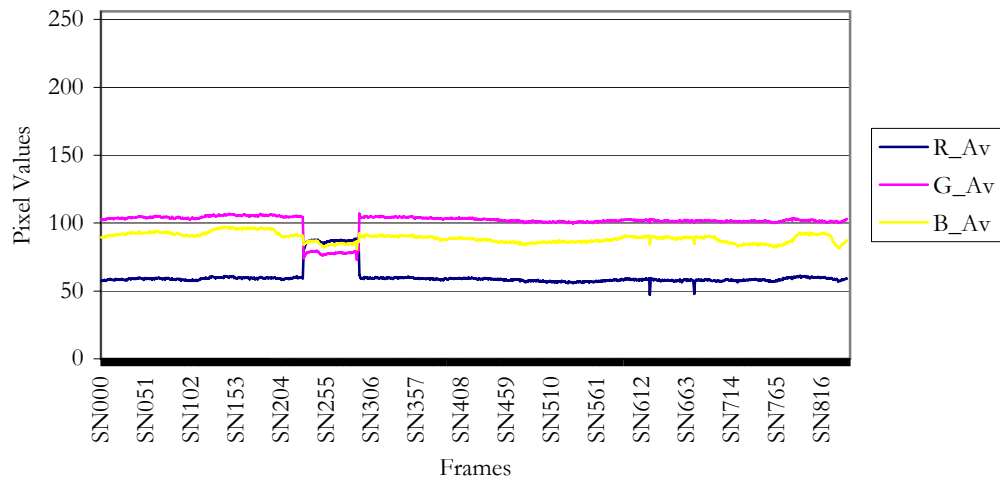
**Original RGB Frame Standard Deviation - RG**



RG: The original image frame pixel standard deviation values – for all frame. (in pixel value)

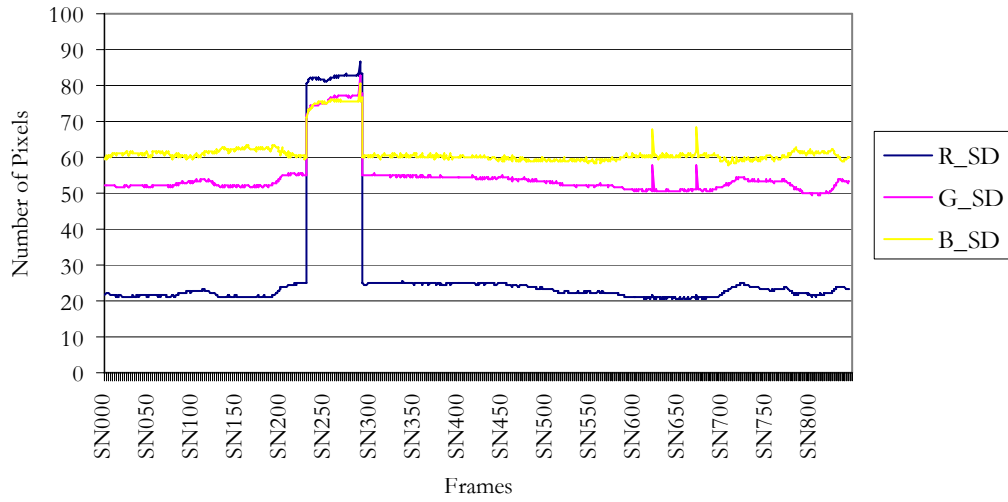
**SN – SNOOKER**

**Original RGB Average Frame Values - SN**



SN: The average original image frame pixel values – for all videos. (in pixel value)

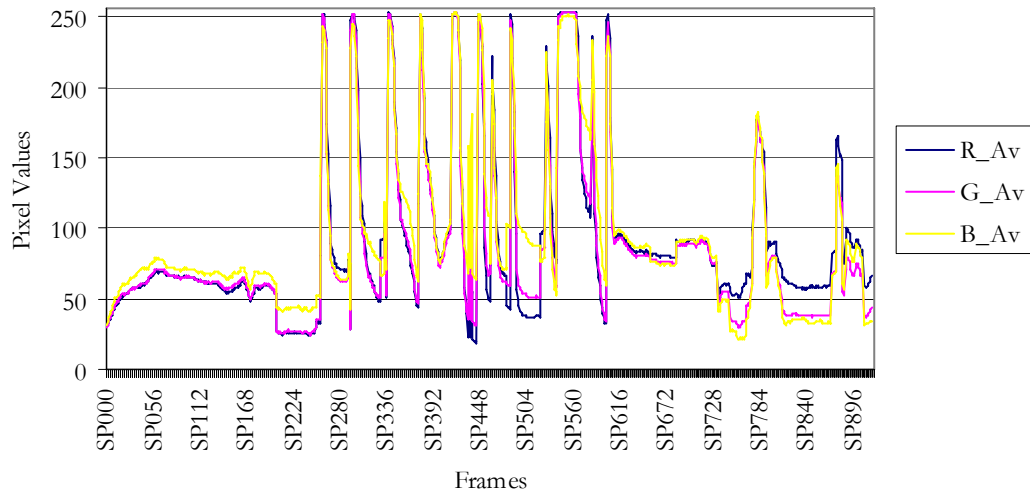
**Original RGB Frame Stand Deviation - SN**



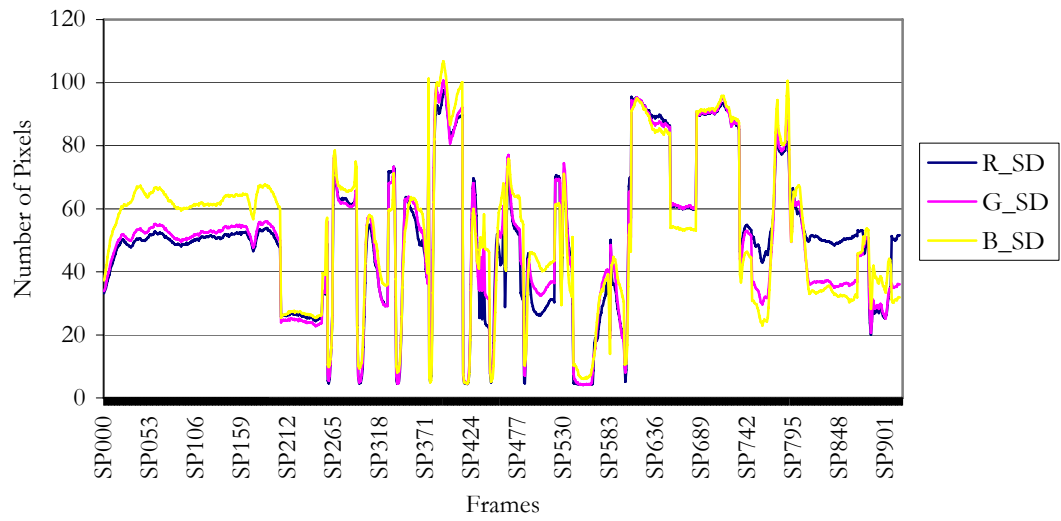
SN: The original image frame pixel standard deviation values – for all frame. (in pixel value)

**SP – SPACE**

**Original RGB Average Frame Values - SP**



SP: The average original image frame pixel values – for all videos. (in pixel value)

**Original RGB Frame Standard Deviation - SP**

SP: The original image frame pixel standard deviation values – for all frame. (in pixel value)